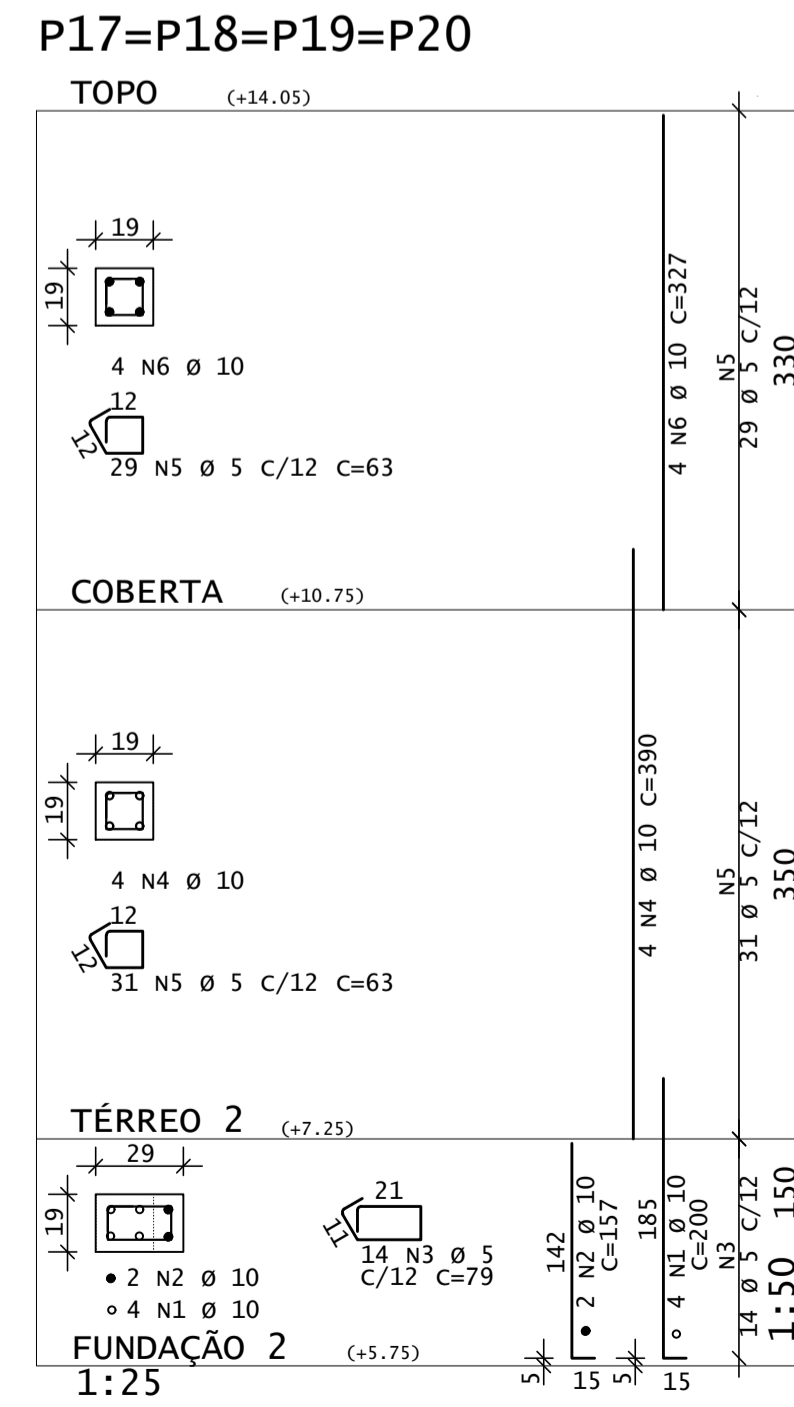
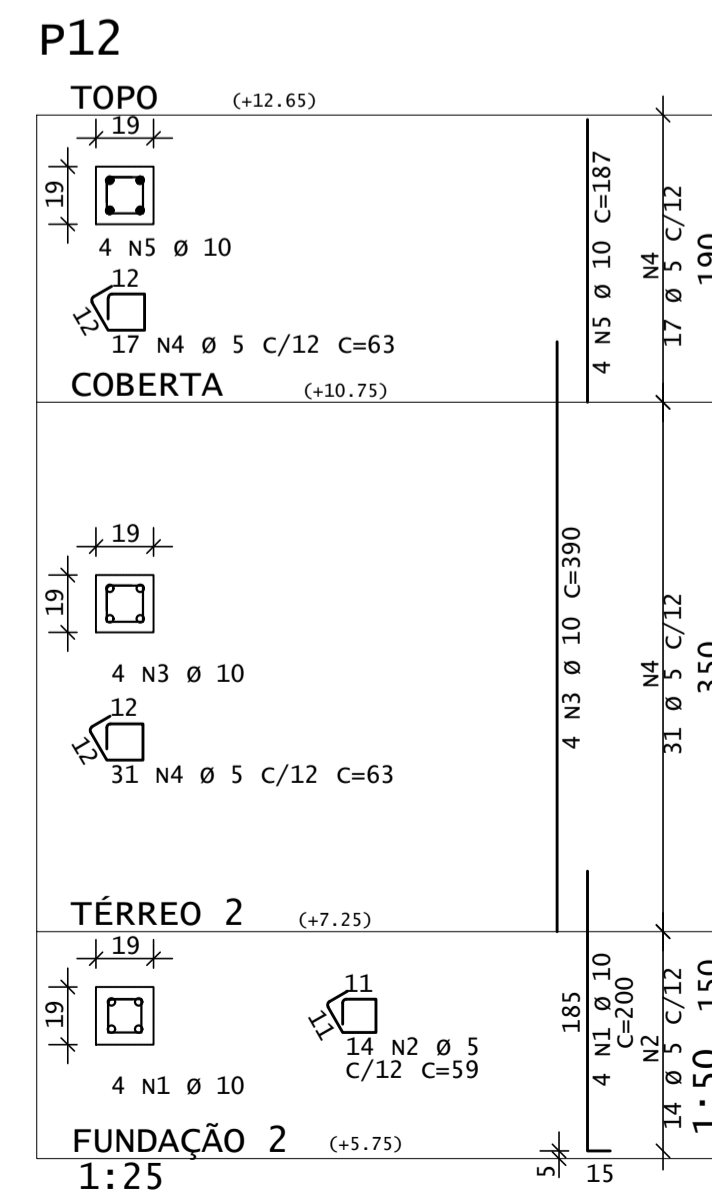
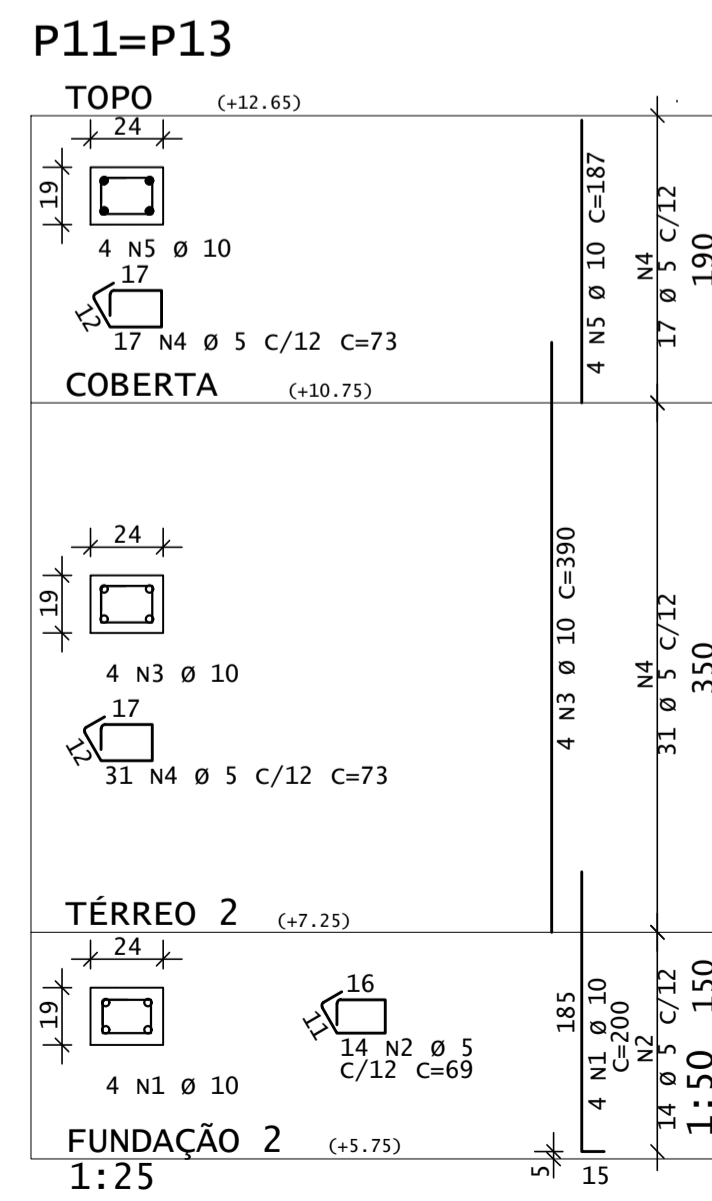
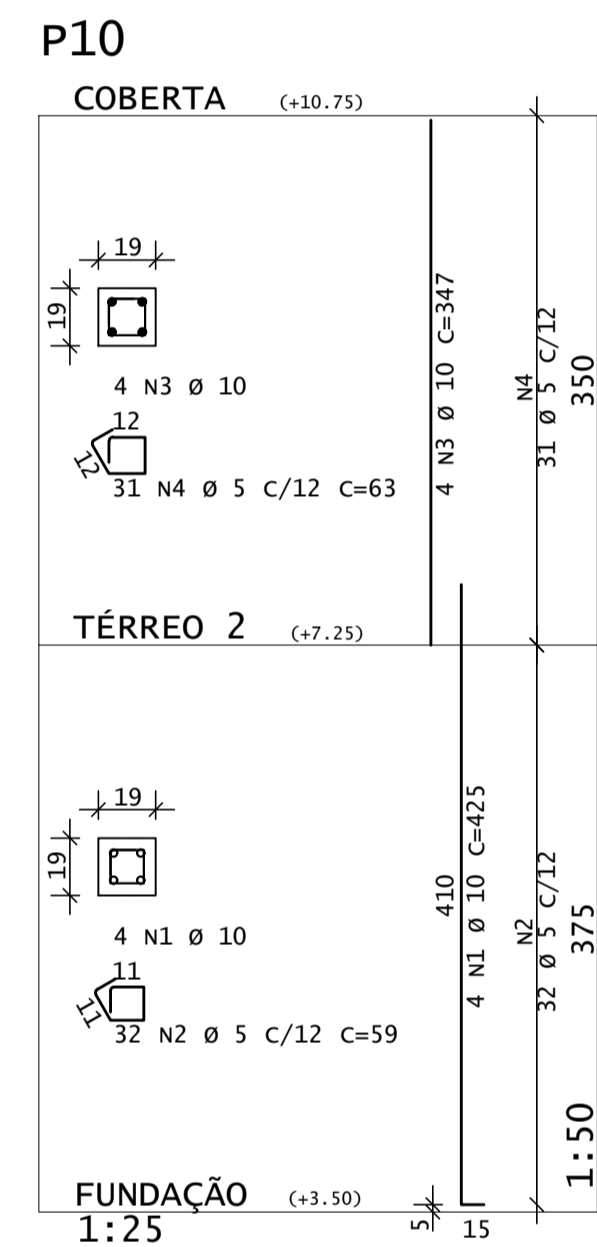
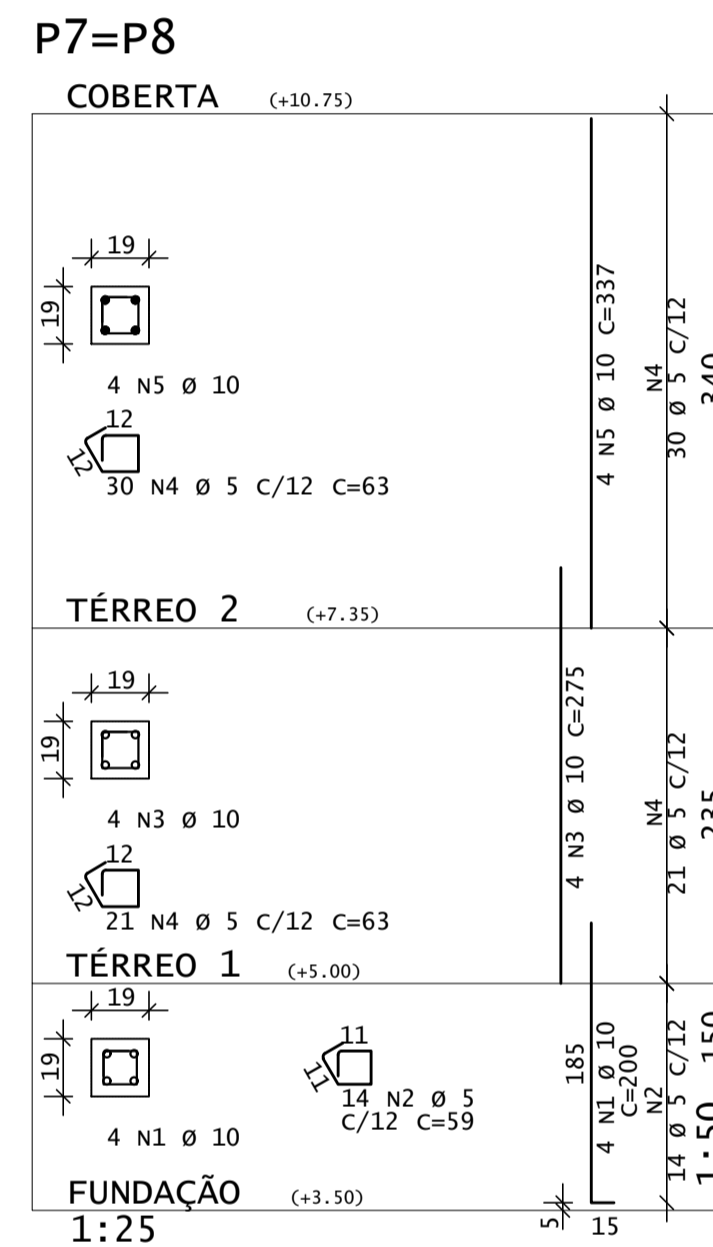
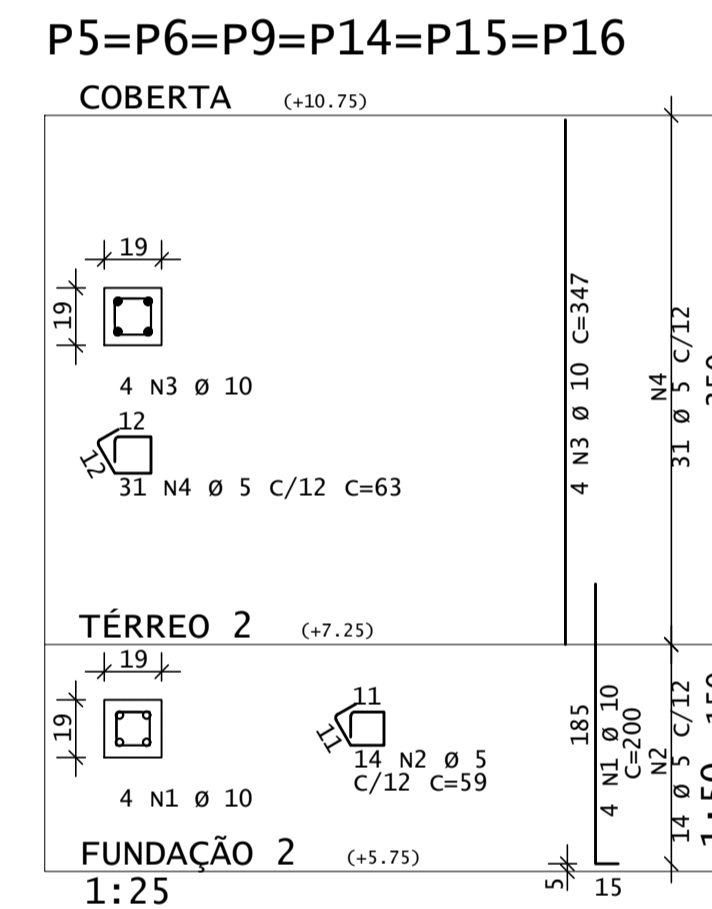
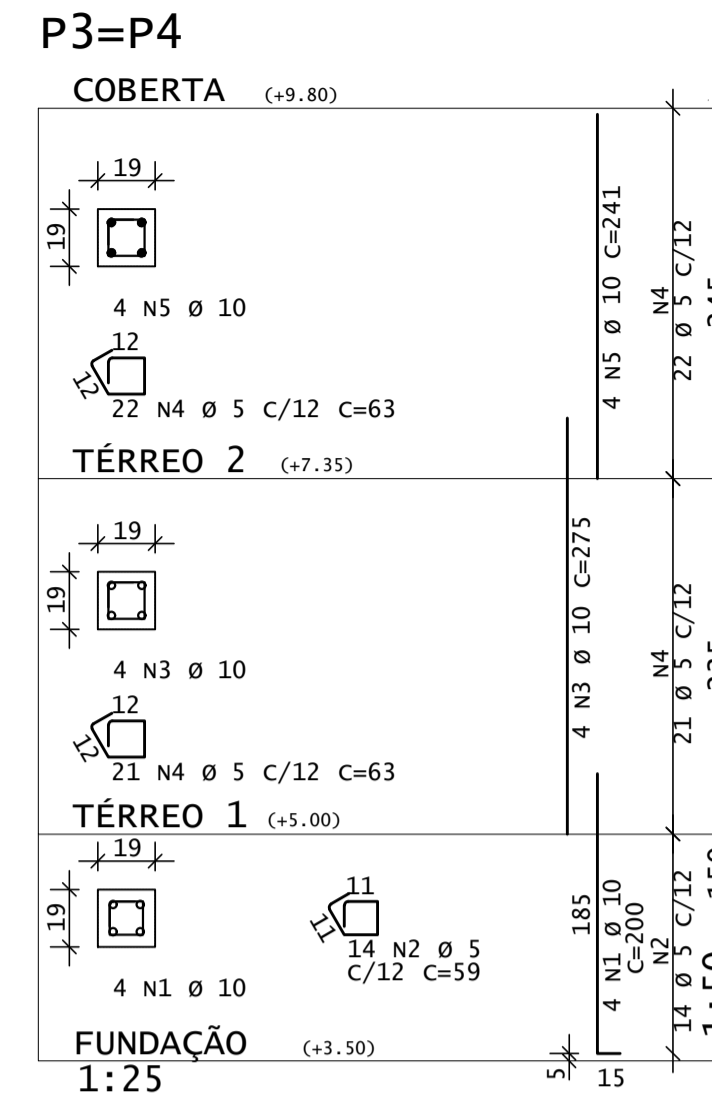
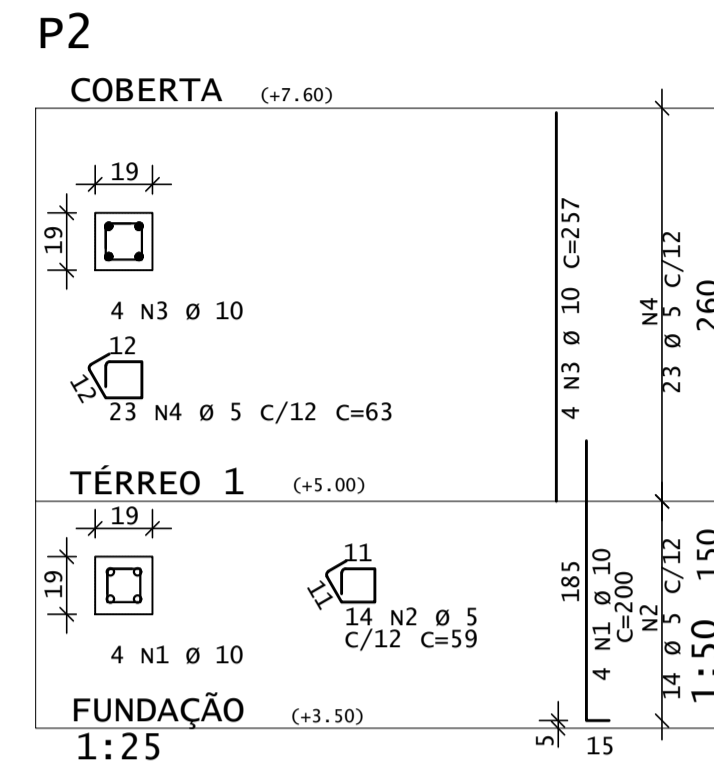
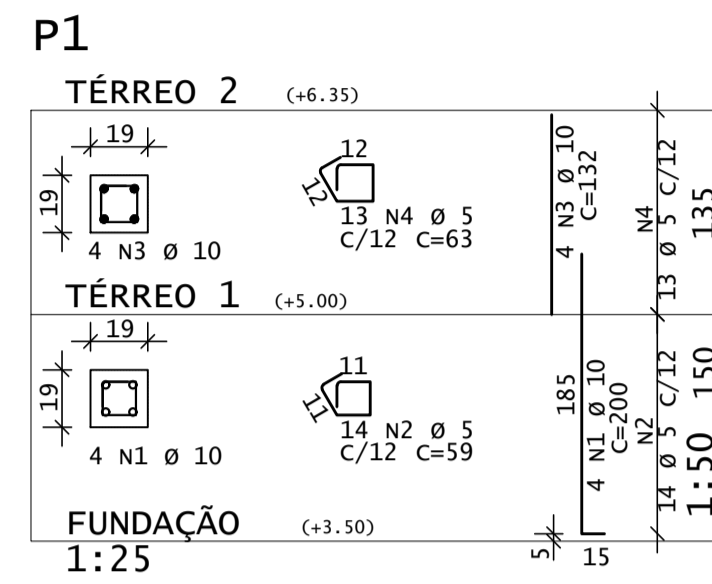


DIÂMETROS DE CURVATURA

Ø	8	10	12 ¹	16	20	22 ²	25
db (cm)	4	5	6 ⁵	8	16	18	20



AÇO	POS	BIT	QUANT	COMPRIMENTO	
				UNIT	TOTAL
		mm	cm		cm
P1					
50	1	10	4	200	800
60	2	5	14	59	826
50	3	10	4	132	528
60	4	5	13	63	819
P2					
50	1	10	4	200	800
60	2	5	14	59	826
50	3	10	4	257	1028
60	4	5	23	63	1449
P3=P4 (X2)					
50	1	10	8	200	1600
60	2	5	28	59	1652
50	3	10	8	275	2200
60	4	5	86	63	5418
50	5	10	8	241	1928
P5=P6=P9=P14=P15=P16 (X6)					
50	1	10	24	200	4800
60	2	5	84	59	4956
50	3	10	24	347	8328
60	4	5	186	63	11718
P7=P8 (X2)					
50	1	10	8	200	1600
60	2	5	28	59	1652
50	3	10	8	275	2200
60	4	5	102	63	6426
50	5	10	8	337	2696
P10					
50	1	10	4	425	1700
60	2	5	32	59	1888
50	3	10	4	347	1388
60	4	5	31	63	1953
P11=P13 (X2)					
50	1	10	8	200	1600
60	2	5	28	69	1932
50	3	10	8	390	3120
60	4	5	96	73	7008
50	5	10	8	187	1496
P12					
50	1	10	4	200	800
60	2	5	14	59	826
50	3	10	4	390	1560
60	4	5	48	63	3024
50	5	10	4	187	748
P17=P18=P19=P20 (X4)					
50	1	10	16	200	3200
60	2	5	8	157	1256
50	3	10	8	390	4424
60	4	5	16	390	6240
50	5	10	240	63	15120
50	6	10	16	327	5232

AÇO	RESUMO DE AÇO		PESO
	BIT	COMPR	
		mm	m
60	5	719	111
50	10	568	351
Peso Total		60 =	111 kgf
Peso Total		50 =	351 kgf

REV	DATA	DESCRIÇÃO
00	14/07/2022	MONTAGEM INICIAL

ASSINATURAS E APROVAÇÃO

PROJETISTA: *Leonardo Silveira Lima*

PROPRIETÁRIO:

LEONARDO SILVEIRA LIMA
ENGENHEIRO CIVIL - RNP: 091581987

PROPRIETÁRIO:

GEO PAC AV. PADRE ANTÔNIO TOMAS, N° 240, SALAS 301/302
BARRIO ALZATEIA, FORTALEZA
FONE: (85) 3341-1341 | EMAIL: GEO@GEO.PAC.COM.BR

PROJETO DE ESTRUTURAS EM CONCRETO

CONTÉUDO:

ARMADURA

IDENTIFICAÇÃO DOS DESENHOS:

01 - PILARES