

Relação do aço

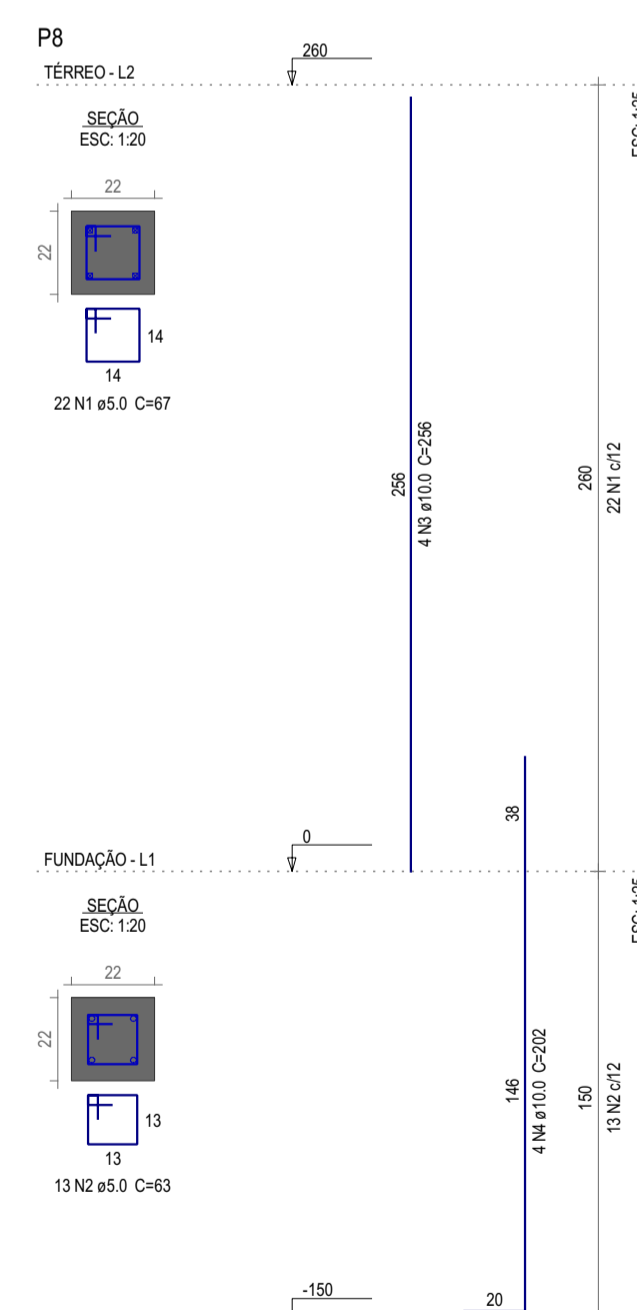
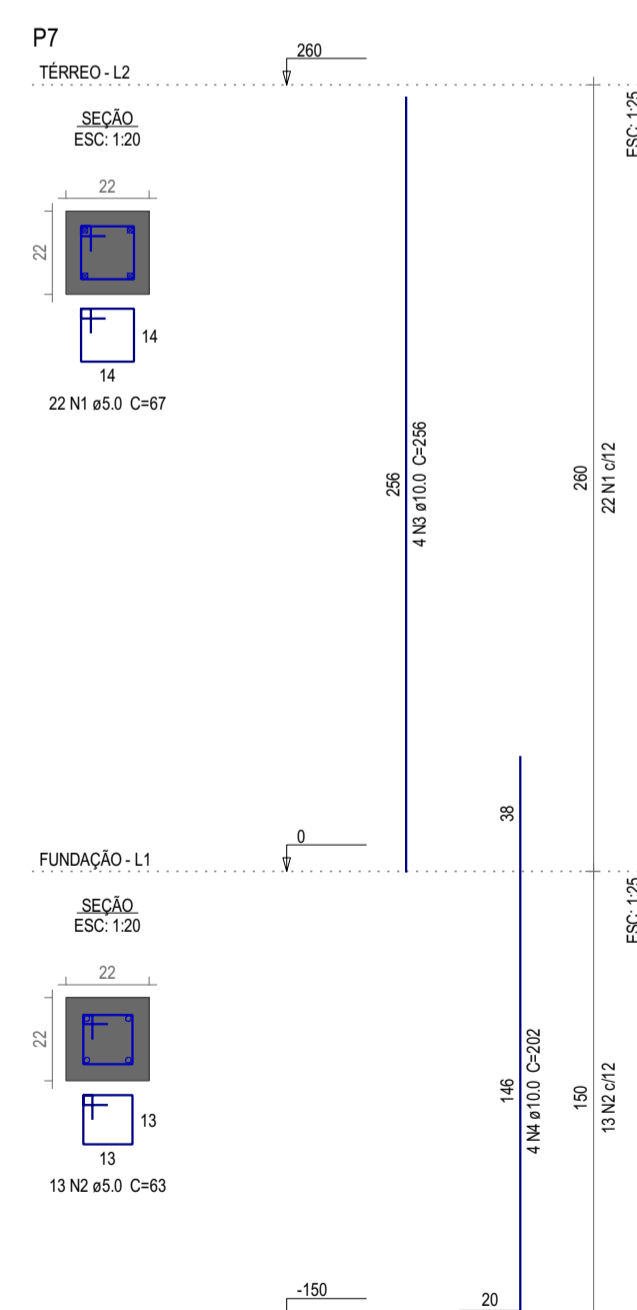
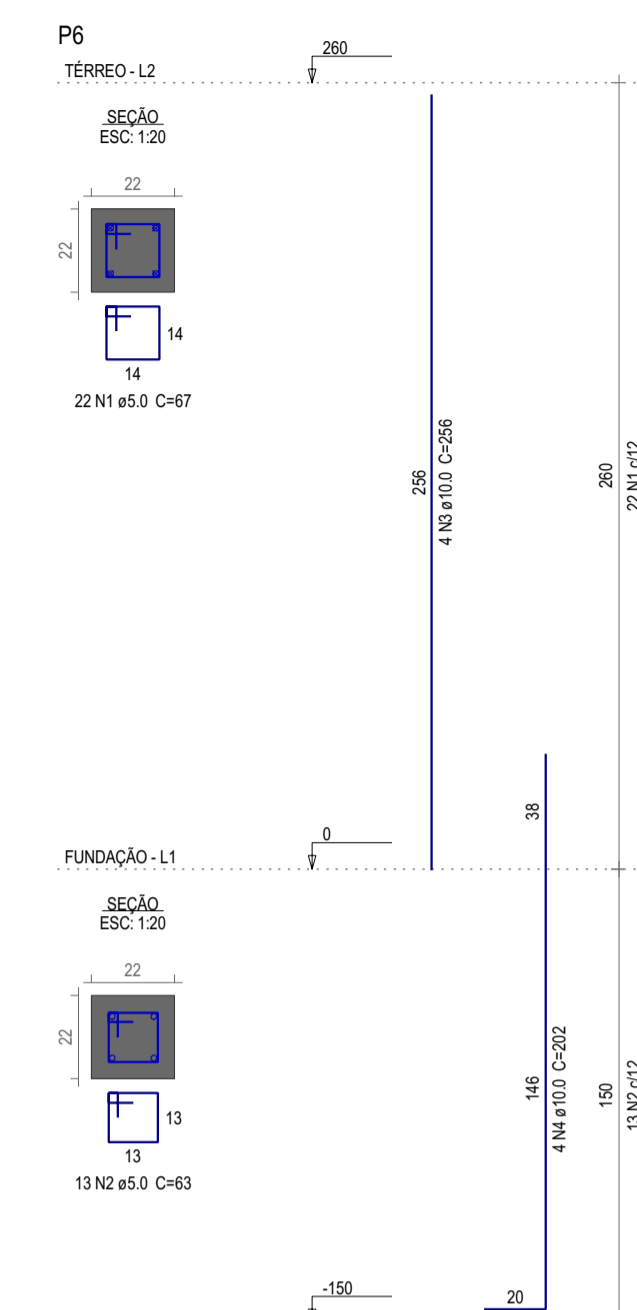
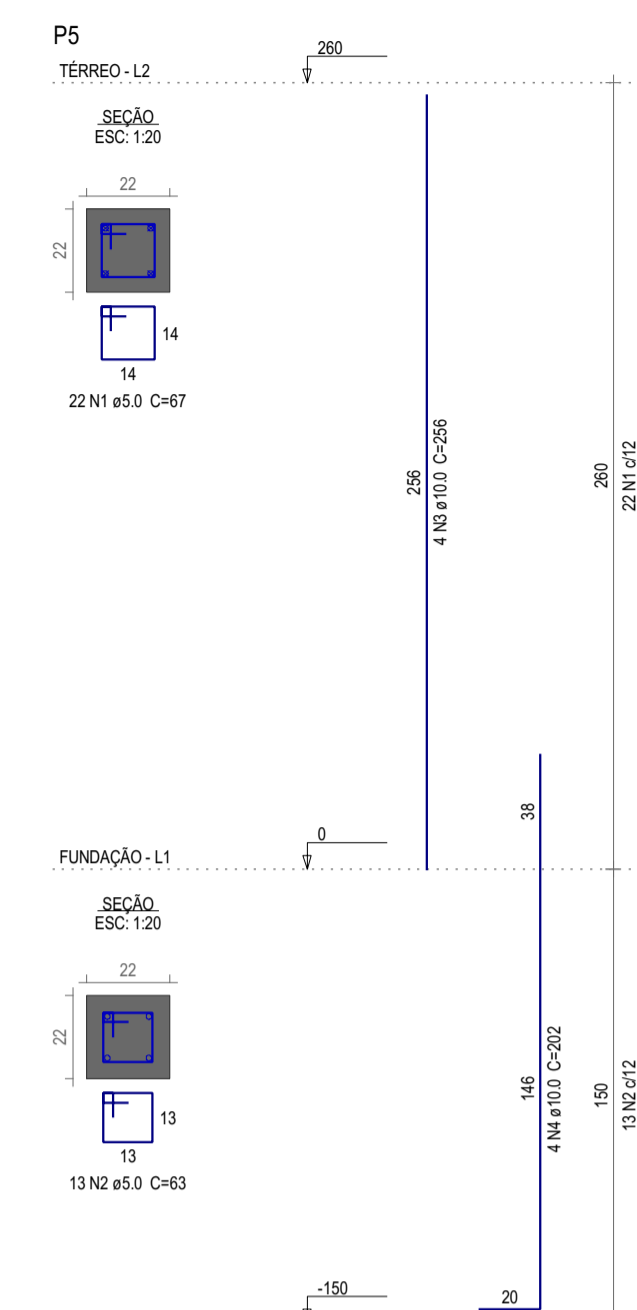
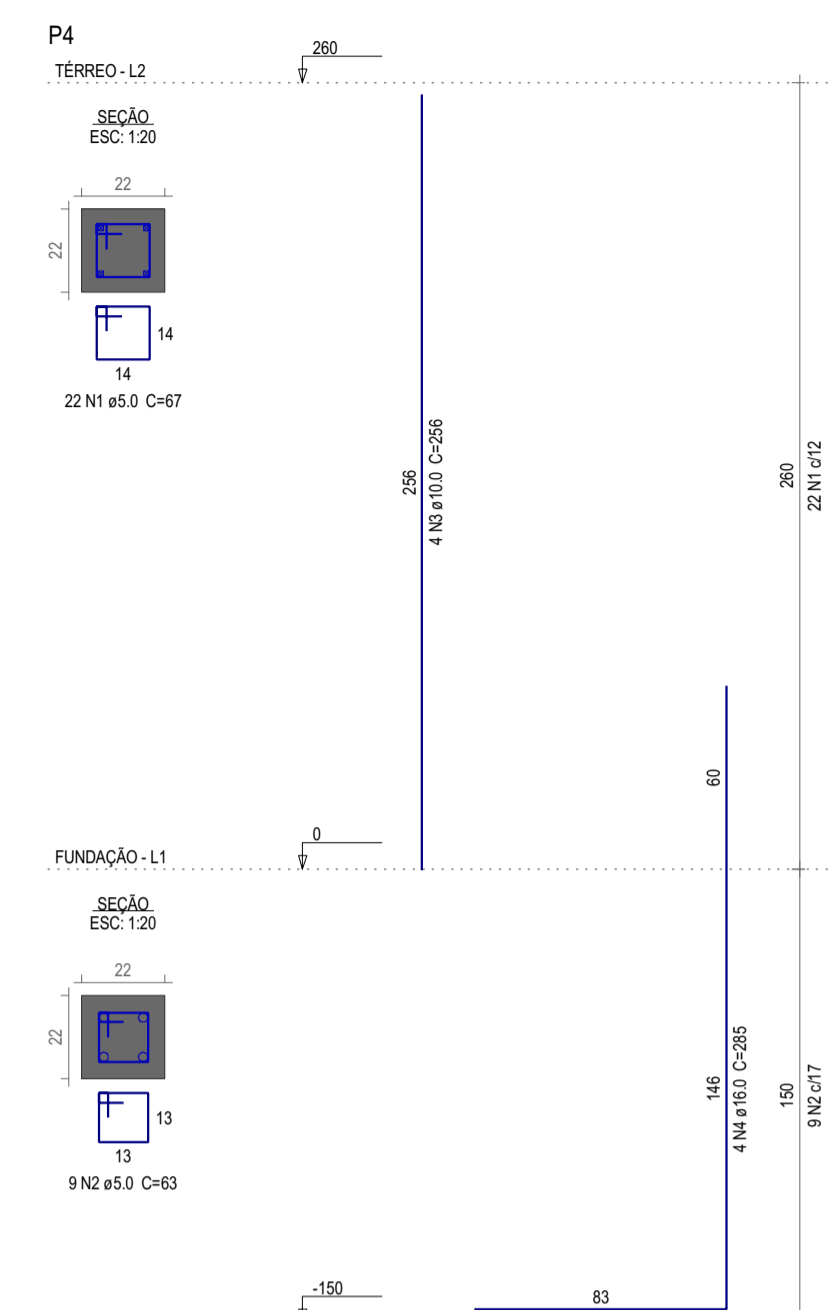
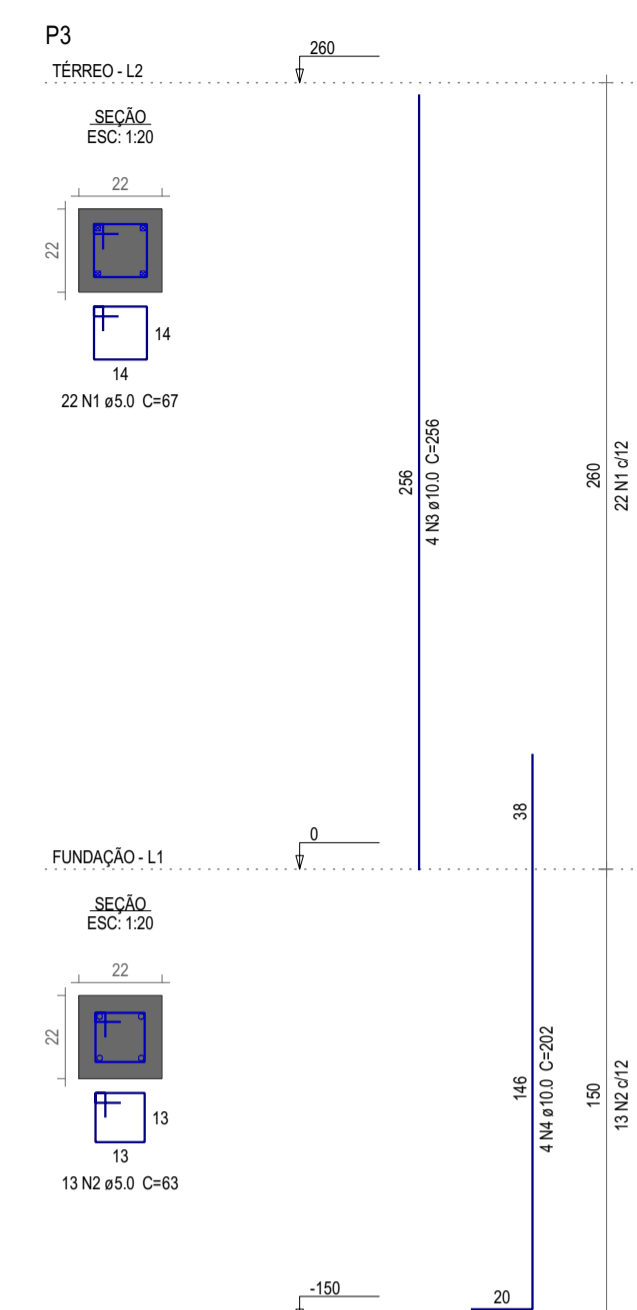
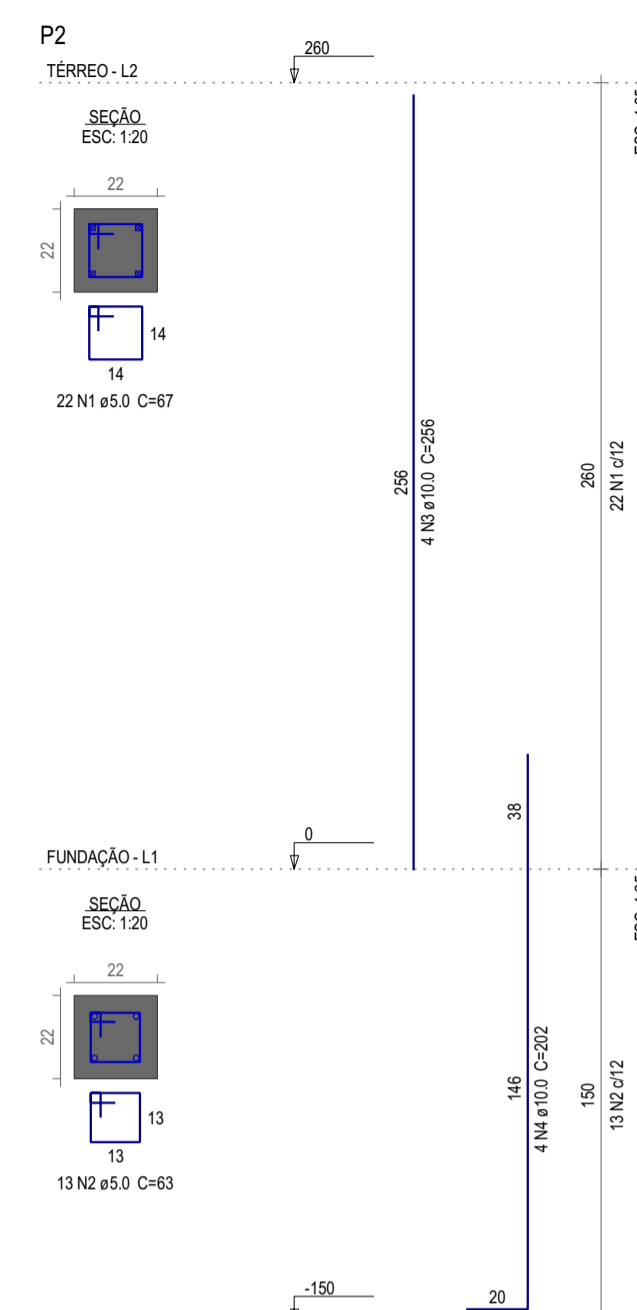
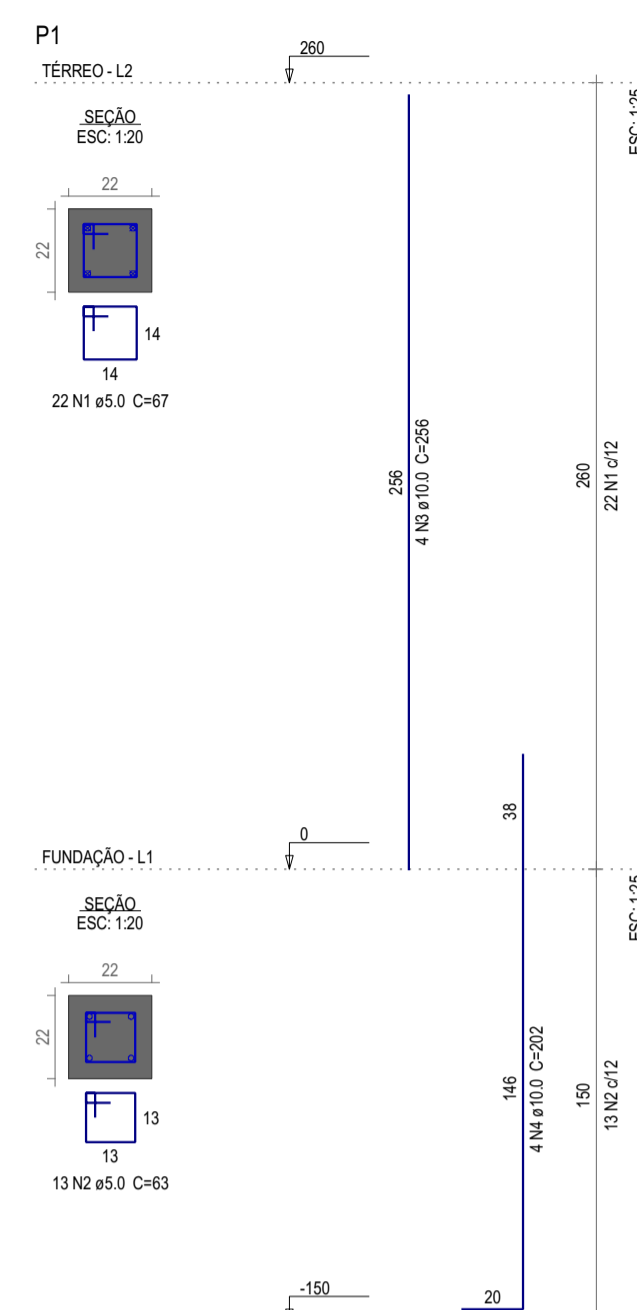
ELEMENTO	AÇO	N	DIAM (mm)	QUANT	CUNTA (cm)	C.TOTAL (cm)
P1	CA50	1	5.0	22	67	1474
	CA60	2	5.0	13	63	819
P2	CA50	3	10.0	4	256	1024
	CA60	4	10.0	4	202	808
	CA60	1	5.0	22	67	1474
	CA60	2	5.0	13	63	819
P3	CA50	3	10.0	4	256	1024
	CA60	4	10.0	4	202	808
	CA60	2	5.0	13	63	819
	CA60	1	5.0	22	67	1474
P4	CA50	3	10.0	4	256	1024
	CA60	1	5.0	22	67	1474
	CA60	2	5.0	9	63	507
	CA60	2	5.0	13	63	819
P5	CA50	3	10.0	4	256	1024
	CA60	1	5.0	22	67	1474
	CA60	2	5.0	13	63	819
	CA60	3	10.0	4	256	1024
P6	CA50	4	10.0	4	256	1024
	CA60	1	5.0	22	67	1474
	CA60	2	5.0	13	63	819
	CA60	3	10.0	4	256	1024
P7	CA50	3	10.0	4	256	1024
	CA60	4	10.0	4	202	808
	CA60	2	5.0	13	63	819
	CA60	1	5.0	22	67	1474
P8	CA50	2	5.0	13	63	819
	CA60	4	10.0	4	202	808
	CA60	1	5.0	22	67	1474
	CA60	3	10.0	4	256	1024
P8	CA50	4	10.0	4	202	808

Resumo do aço

AÇO	DIAM (mm)	C.TOTAL (m)	PESO (kg)
CA50	10.0	138.5	85.4
CA60	16.0	11.4	18
CA60	5.0	181	27.9

PESO TOTAL (kg)	
CA50	103.4
CA60	27.9

Volume de concreto (C-30) = 1.48 m³
Área de forma = 26.49 m²



ASSINATURAS E APROVAÇÃO

PROJETISTA LEONARDO SILVEIRA LIMA ENGENHEIRO CIVIL - RNP: 0611581067	PROPRIETÁRIO
--	--------------

APROVAÇÃO

PROPRIETÁRIO: RUA CALUTO MACHADO, 37 - SALA 44
BARRIO PRES. FLORES - GUARUBA - CEP: 41.775-040
GEO-PAC@GEO-PAC.COM.BR - (51) 3241-3147

PROPRIETÁRIO: PREFEITURA MUNICIPAL DE ARACATI

OBJETO: AMPLIAÇÃO DO COMPLEXO CENTRO VIDA

PROJETO: ESTRUTURAS DE CONCRETO DO VESTIÁRIO

IDENTIFICAÇÃO DOS DESENHOS:

PILARES