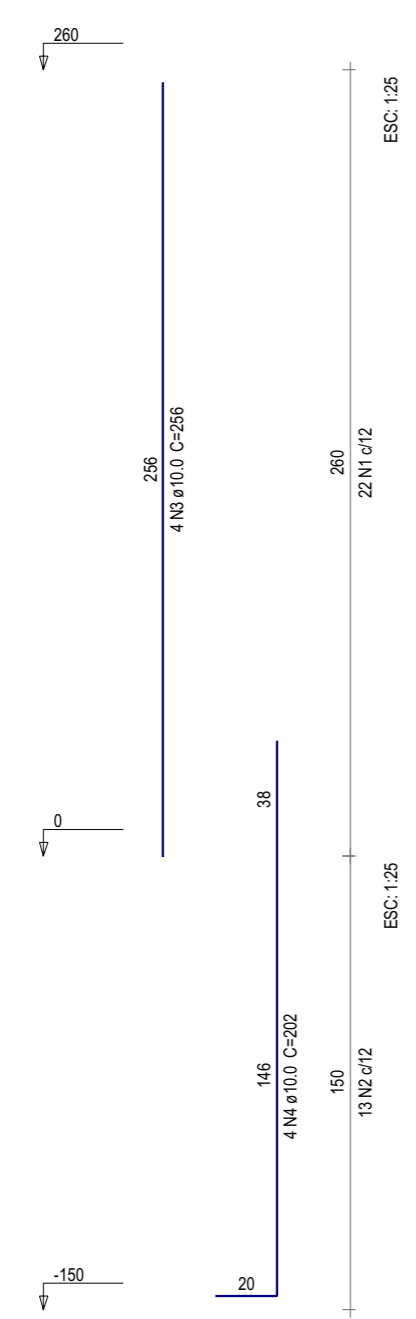
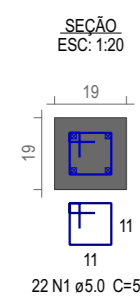
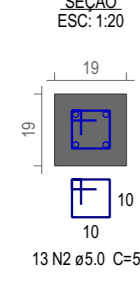


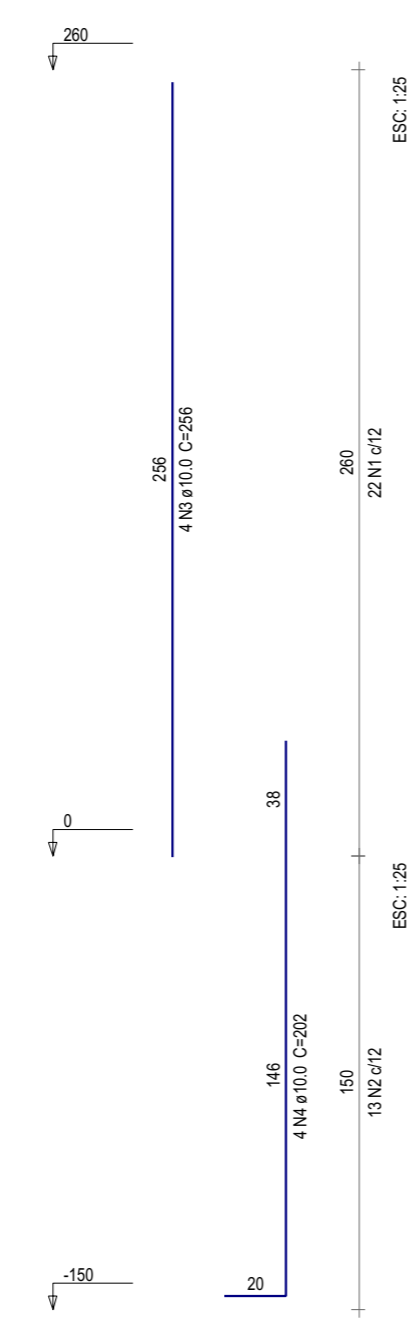
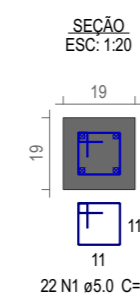
P1
TÉRREO - L2



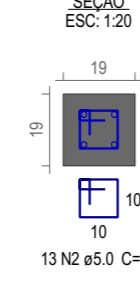
FUNDAÇÃO - L1



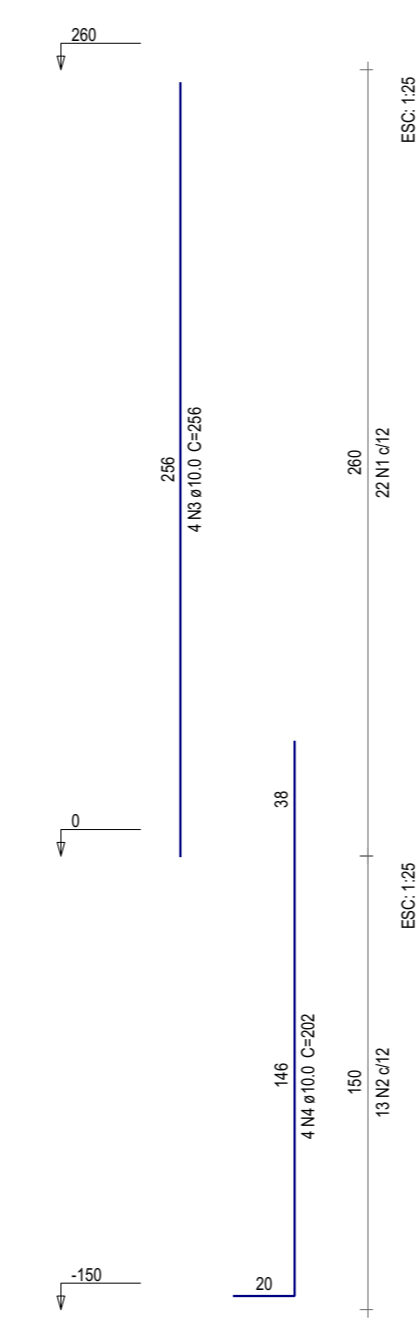
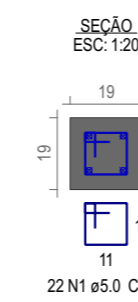
P2
TÉRREO - L2



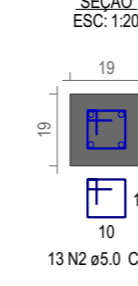
FUNDAÇÃO - L1



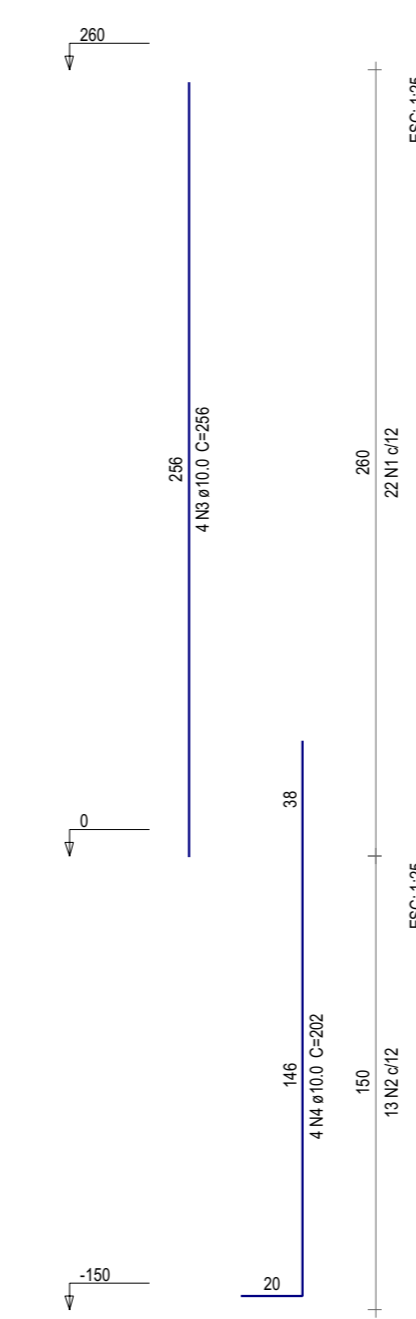
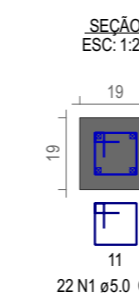
P3
TÉRREO - L2



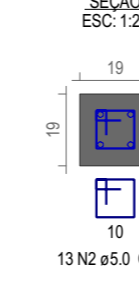
FUNDAÇÃO - L1



P4
TÉRREO - L2



FUNDAÇÃO - L1



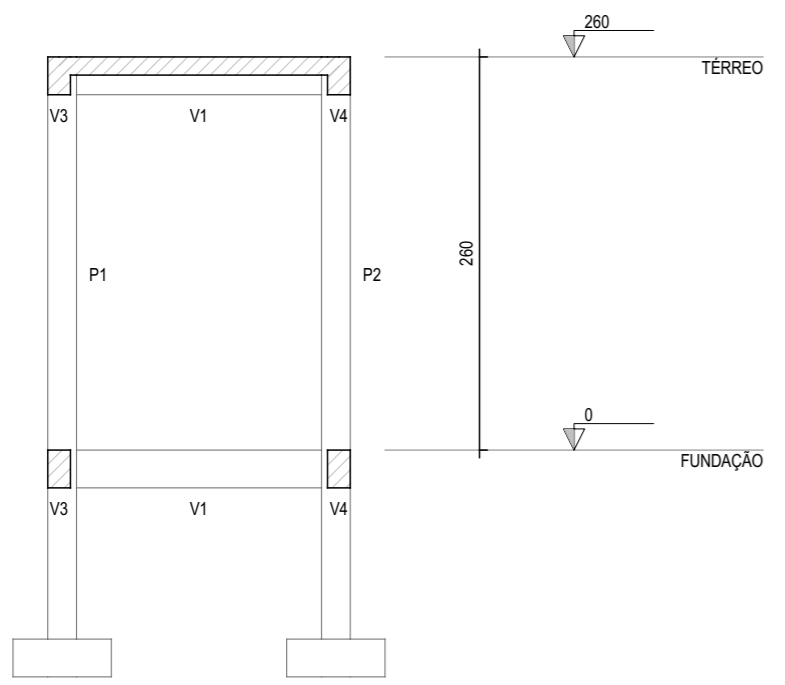
Relação do aço

ELEMENTO	AÇO	N	DIAM (mm)	QUANT	C.UNIT (cm)	C.TOTAL (cm)
P1	CA60	1	5.0	22	55	1210
	CA60	2	5.0	13	51	663
	CA50	3	10.0	4	256	1024
	CA50	4	10.0	4	202	808
P2	CA60	1	5.0	22	55	1210
	CA60	2	5.0	13	51	663
	CA50	3	10.0	4	256	1024
	CA50	4	10.0	4	202	808
P3	CA60	1	5.0	22	55	1210
	CA60	2	5.0	13	51	663
	CA50	3	10.0	4	256	1024
	CA50	4	10.0	4	202	808
P4	CA60	1	5.0	22	55	1210
	CA60	2	5.0	13	51	663
	CA50	3	10.0	4	256	1024
	CA50	4	10.0	4	202	808

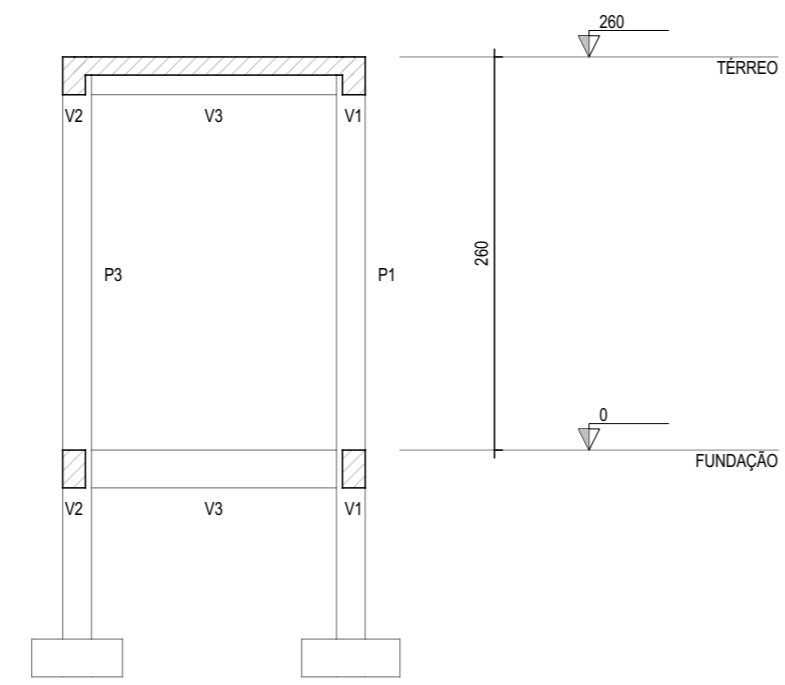
Resumo do aço

AÇO	DIAM (mm)	C.TOTAL (m)	PESO (kg)
CA50	10.0	73.3	45.2
CA60	5.0	75	11.5
PESO TOTAL (kg)			
CA50	45.2		
CA60	11.5		

Volume de concreto (C-30) = 0.56 m³
Área de forma = 11.7 m²




CORTE A-A
ESC: 1:50



CORTE B-B
ESC: 1:50

ASSINATURAS E APROVAÇÃO

PROJETISTA: 
LEONARDO SILVEIRA LIMA
ENGENHEIRO CIVIL - RNP: 0601581067

PROPRIETÁRIO:

APROVAÇÃO

GEOPAC RUA CALIXTO MACHADO, 27 - SALA 04
BARRO PRES FAÇANHA - EUSEBÓIDE, CEP: 61.775-060
GEOPAC@GEOPAC.COM.BR - (85) 3241-3147

PROPRIETÁRIO:
PREFEITURA MUNICIPAL DE ARACATI

OBRA:
IMPLANTAÇÃO DE PISCINAS EM ESCOLAS - ESCOLA SASKIA

PROJETO:
ESTRUTURAS DE CONCRETO DO DEPÓSITO

IDENTIFICAÇÃO DOS DESENHOS:
PILARES

LOCAL: ARACATI-CE DATA: JANEIRO/2023 PRANCHA: 3 / 3
DESENHO: CAMILY VASCONCELOS ESCALA: INDICADA CONTROLE: ARCT 22.60