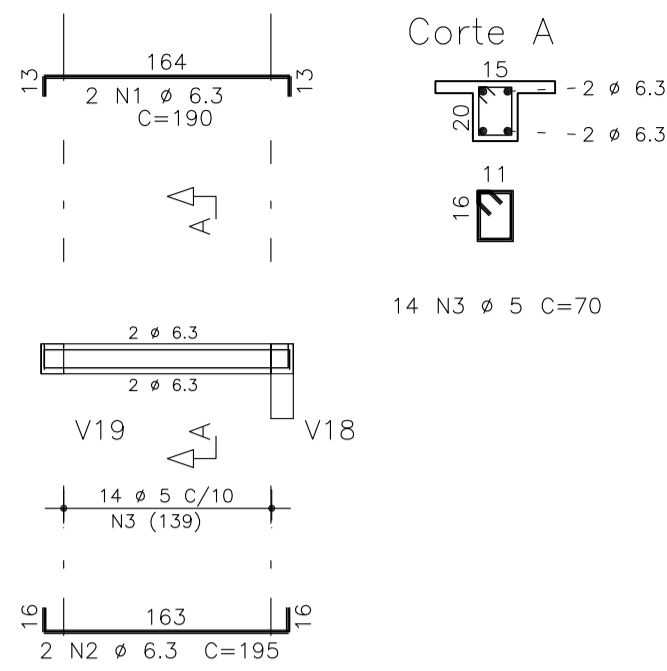
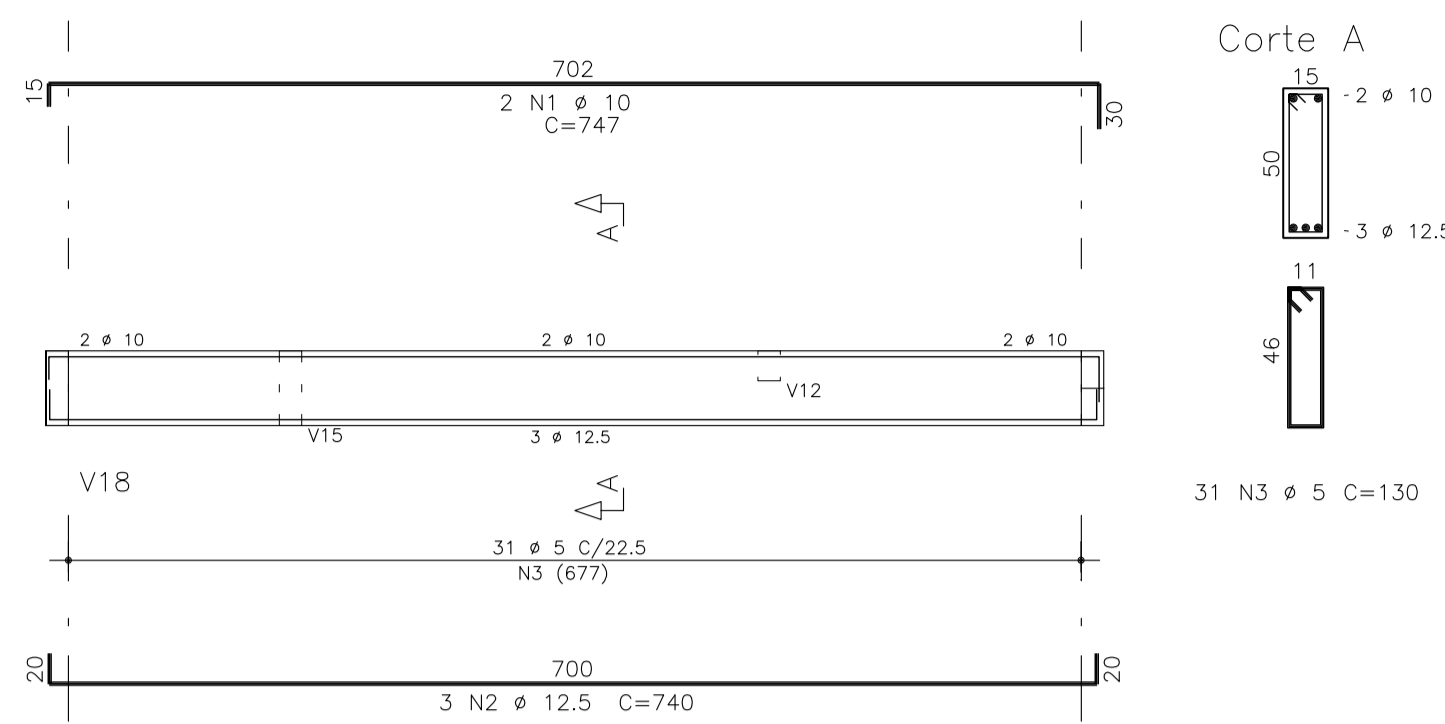


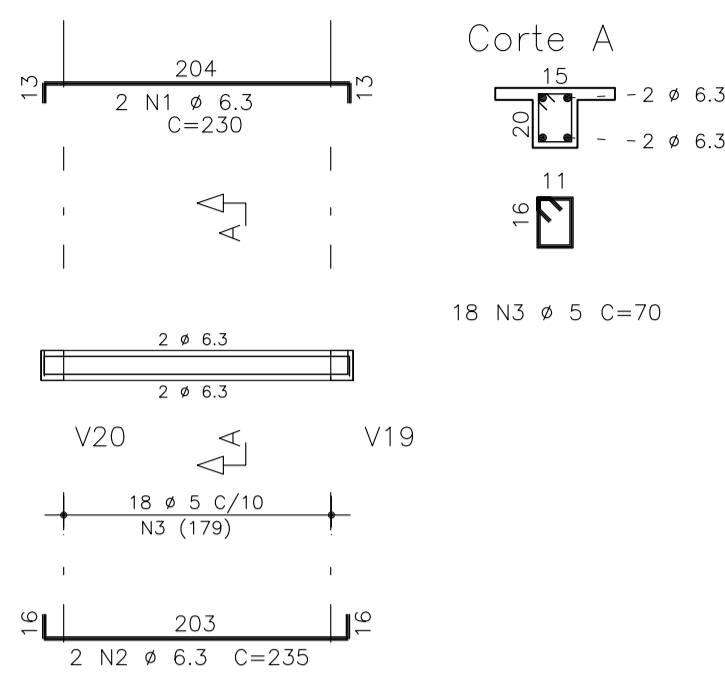
V22 15/20



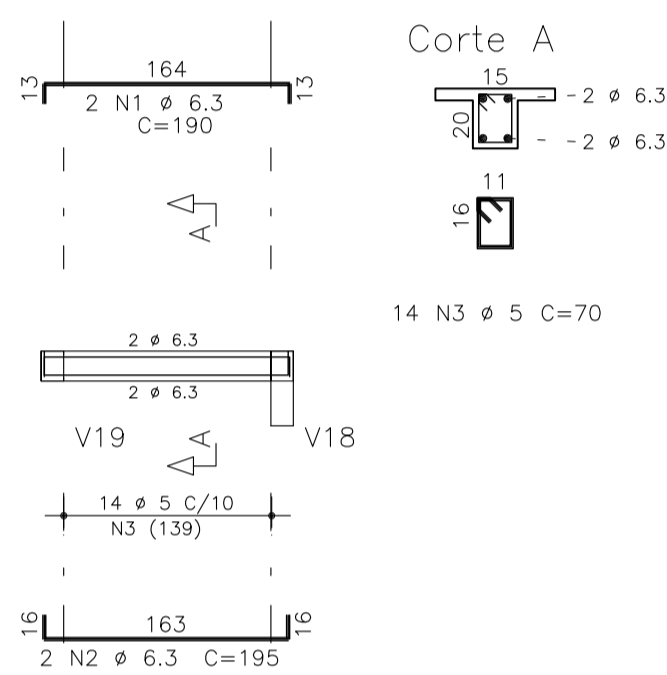
V23 15/50



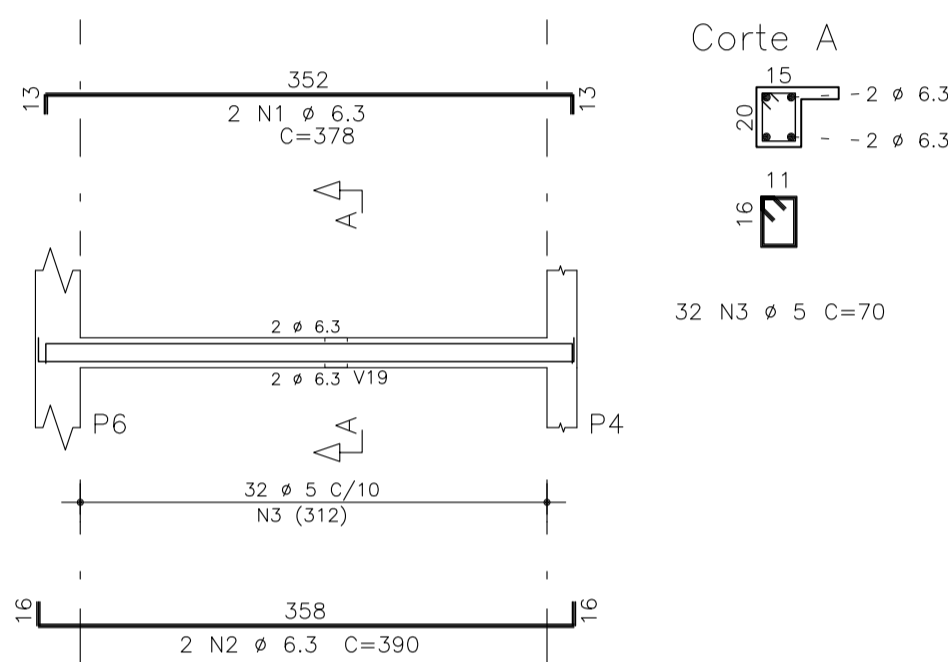
V24 15/20



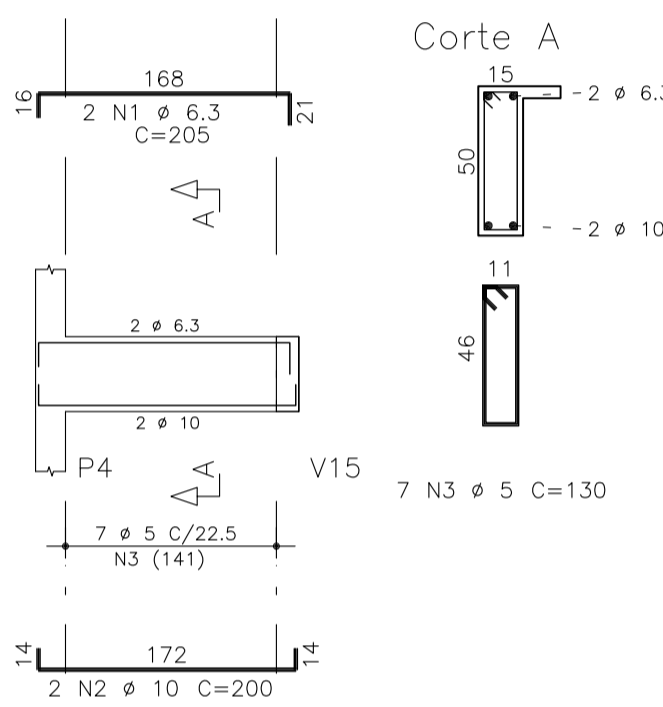
V25 15/20



V26 15/20



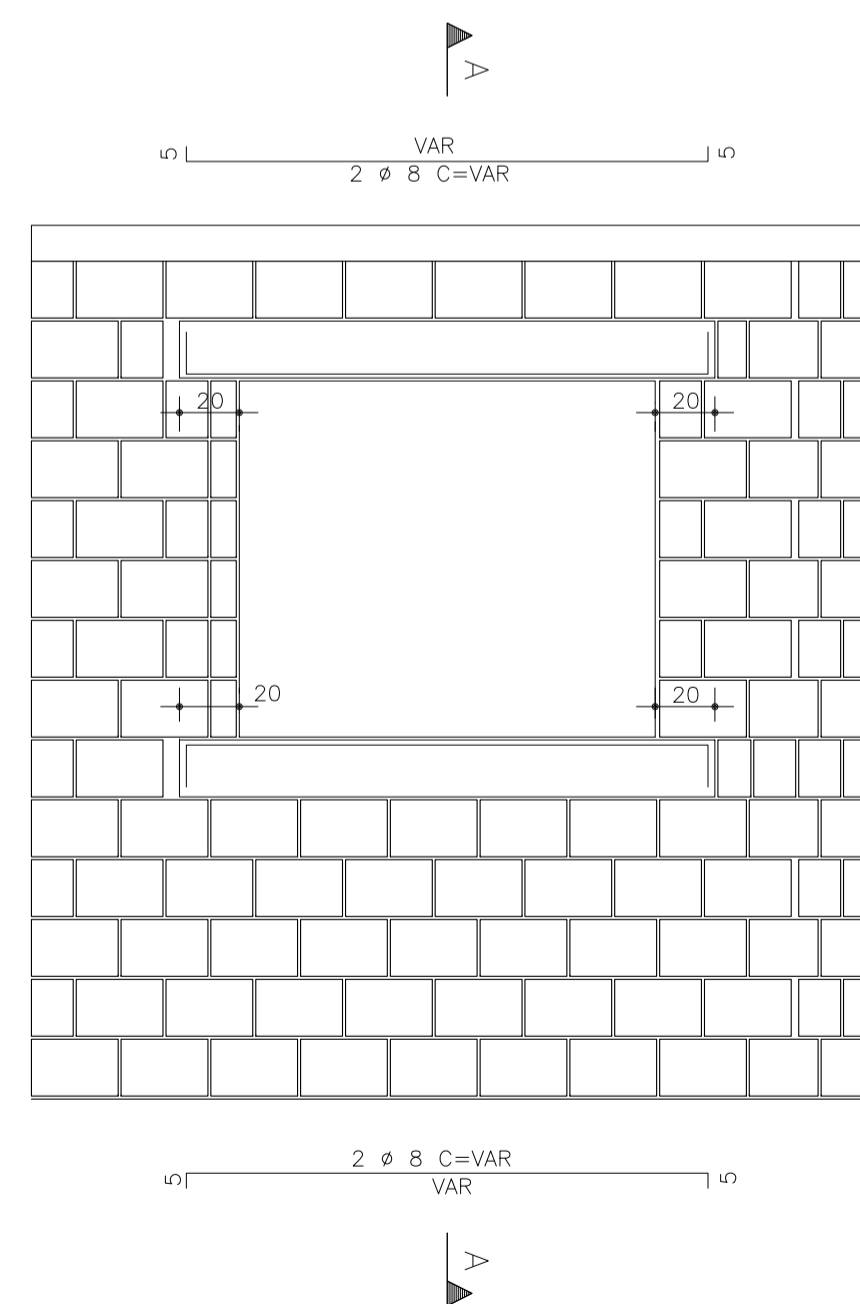
V27 15/50



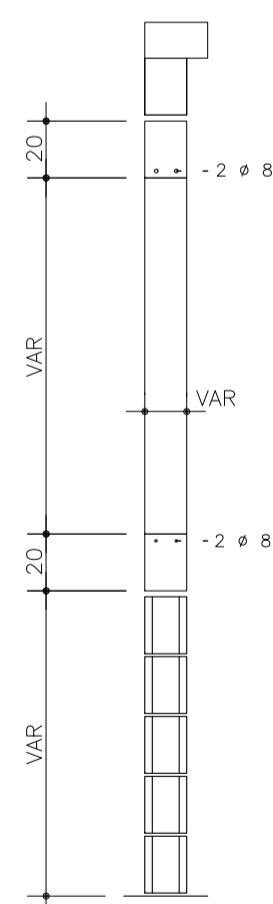
ACO	POS	BIT (mm)	QUANT	COMPRIMENTO	
				UNIT (cm)	TOTAL (cm)
V22					
50A	1	6.3	2	190	380
50A	2	6.3	2	195	390
60B	3	5	14	70	980
V23					
50A	1	10	2	747	1494
50A	2	12.5	3	740	2220
60B	3	5	31	130	4030
V24					
50A	1	6.3	2	230	460
50A	2	6.3	2	235	470
60B	3	5	18	70	1260
V25					
50A	1	6.3	2	190	380
50A	2	6.3	2	195	390
60B	3	5	14	70	980
V26					
50A	1	6.3	2	378	756
50A	2	6.3	2	390	780
60B	3	5	32	70	2240
V27					
50A	1	6.3	2	205	410
50A	2	10	2	200	400
60B	3	5	7	130	910

RESUMO ACO CA 50-60			
ACO	BIT (mm)	COMPR (m)	PESO (kg)
60B	5	104	17
50A	6.3	44	11
50A	10	19	12
50A	12.5	22	22
Peso Total		60B =	17 kg
Peso Total		50A =	45 kg

ARREIMATE DE PORTAS E JANELAS



Corte A-A



SOLUÇÃO PARA AS TRINCAS NAS PAREDES:

Abriu a trinca 2 cm para cada lado e aproximadamente 1 cm de profundidade para, colar ou grampear uma telinha de nylon (ou similar). Preparar uma argamassa com cimento, cal e areia na proporção 1:2:8, adicionar cola branca à água na proporção de 1:3 (cola:água), preencher a trinca aberta com a mistura e fazer o acabamento.

NOTAS :

- TENSAO DO CONCRETO :
 $f_{ck} > 30 \text{ MPa}$
- COBRIMENTOS DAS ARMADURAS :
FUNDAÇÃO: 3.0 cm ; PILAR: 2.5 cm ; VIGA: 2.0 cm ; LAJE: 1.5 cm

GULIELMO VIANA DANTAS

ENG. CIVIL CREA CE 3003-D

Proprietário:	CDL DE ARACATI		
Construtora:			
Obra:	REFORMA		
Assunto:	ARMADURAS DO PAV1		
Desenho:	TQS	Escala:	1:50
		Data:	SET/16
			PRANCHA
RUA DORALICE COSTA, 362 FONE (085) 3459 07 68 ; 9613 40 06		(CEP) 60810-680 - FORTALEZA - CE/RA FAX (085) 3459 07 68	