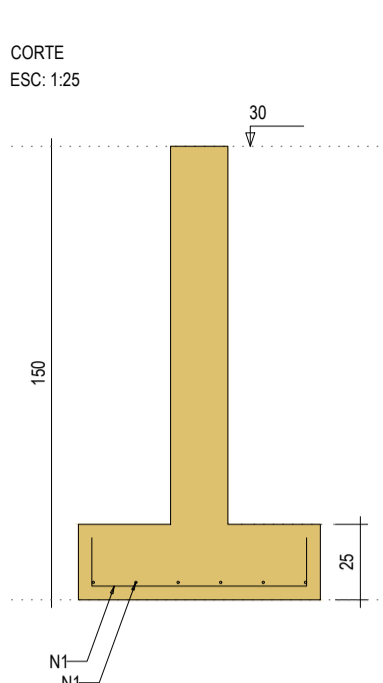
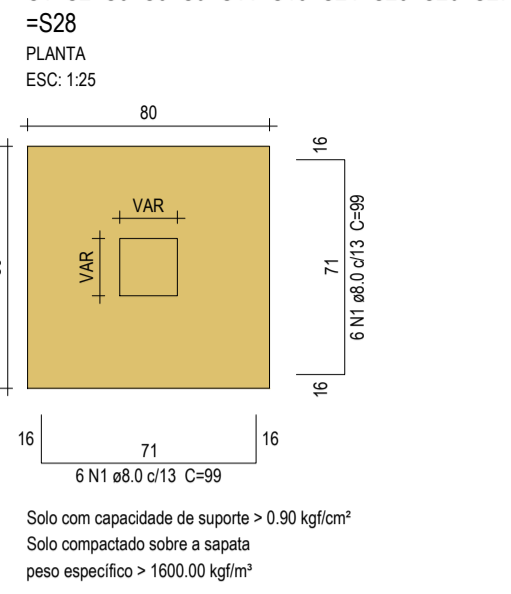
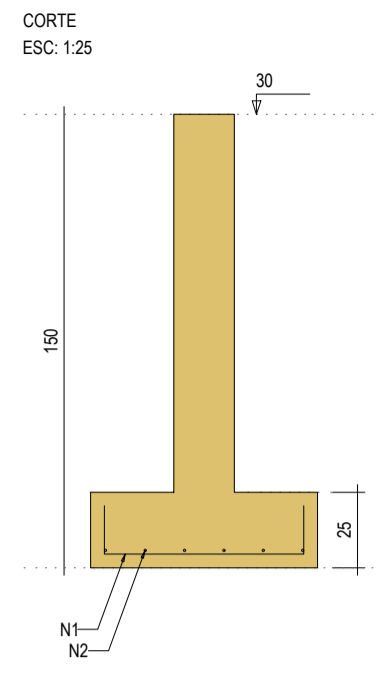
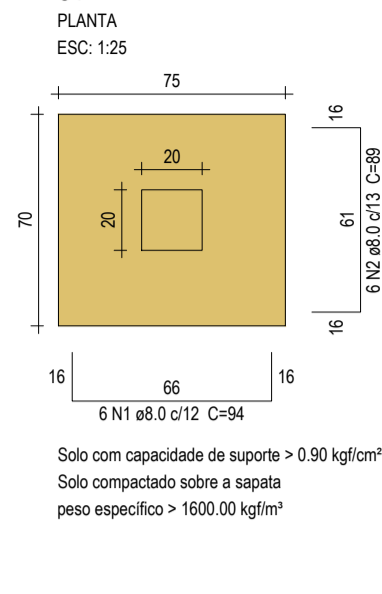


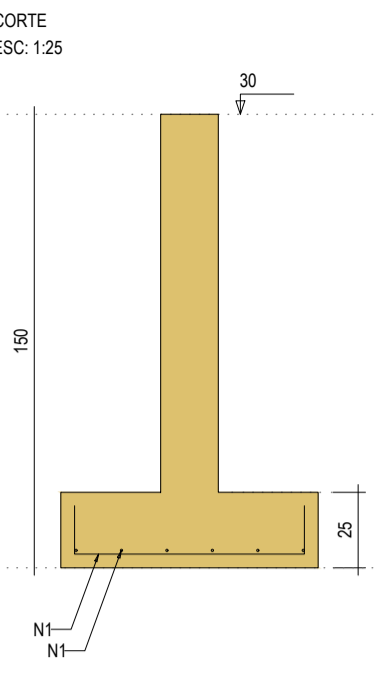
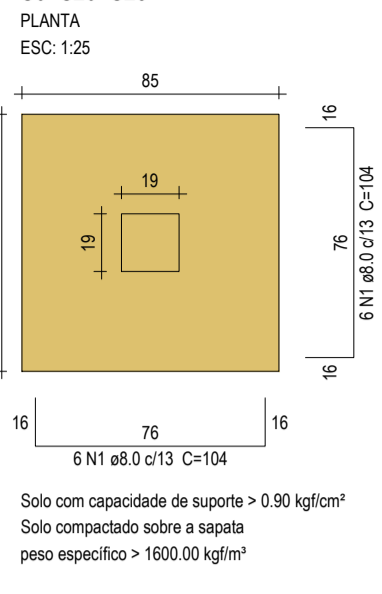
S1-S2=S3=S5=S9=S11=S15=S24=S25=S26=S27



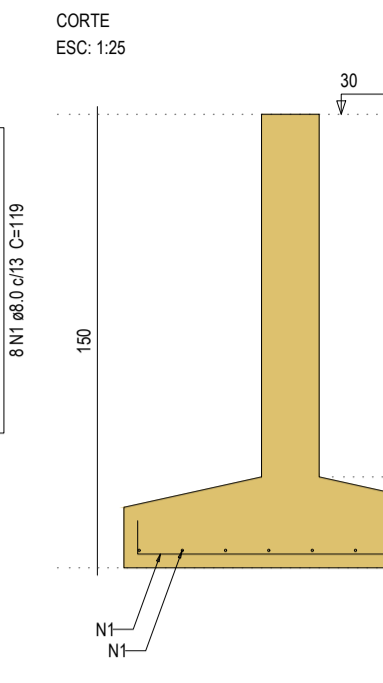
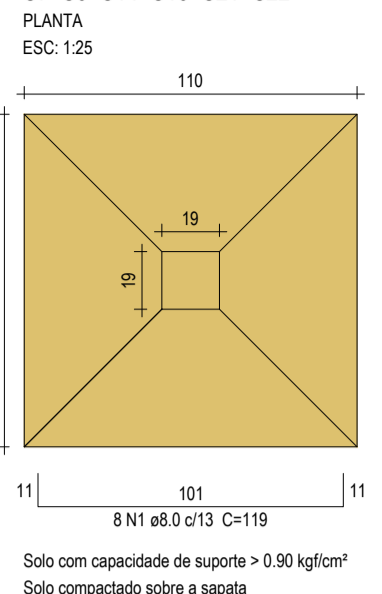
S4



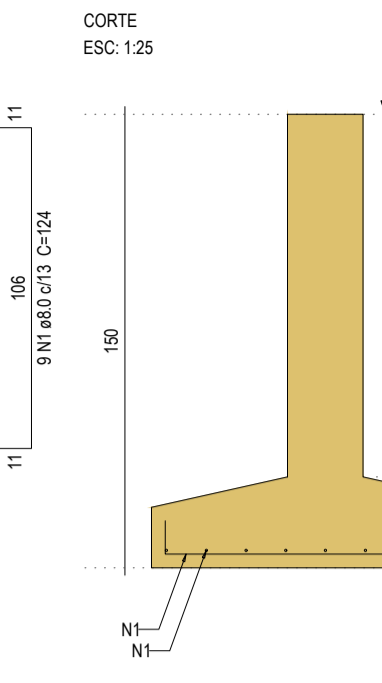
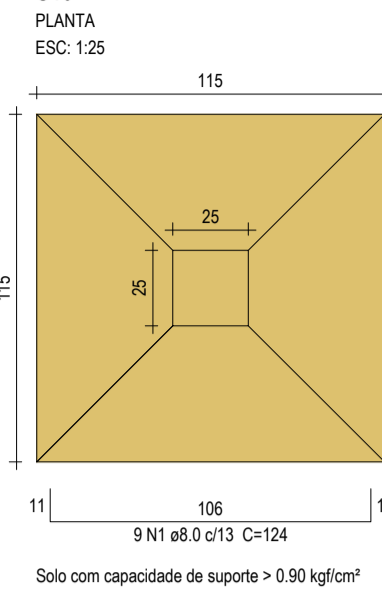
S6=S20=S23



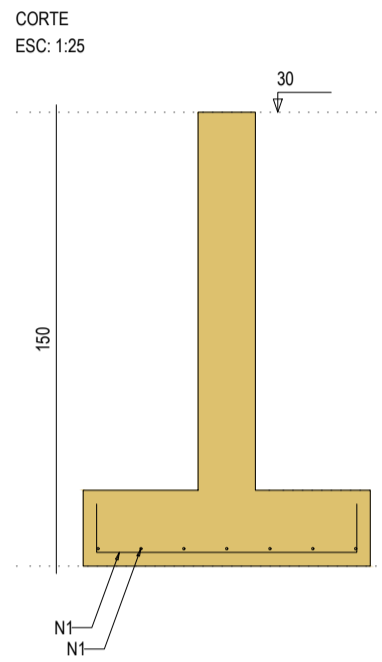
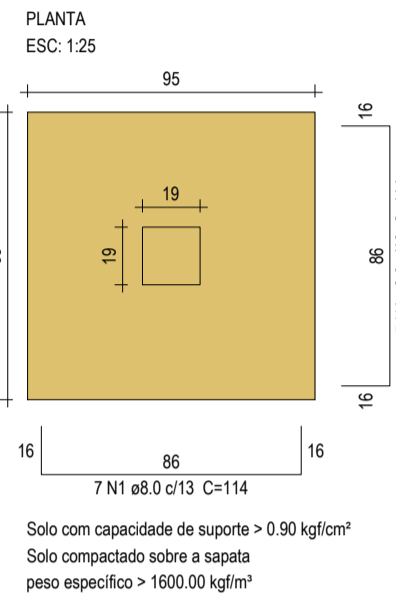
S7=S8=S14=S18=S21=S22



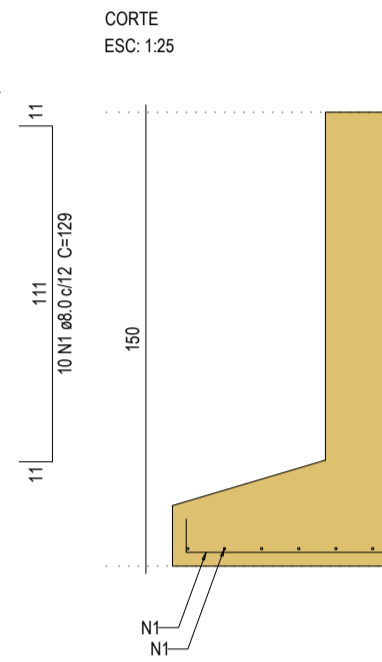
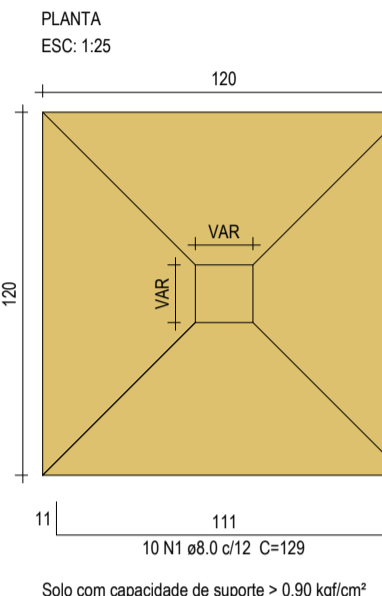
S10



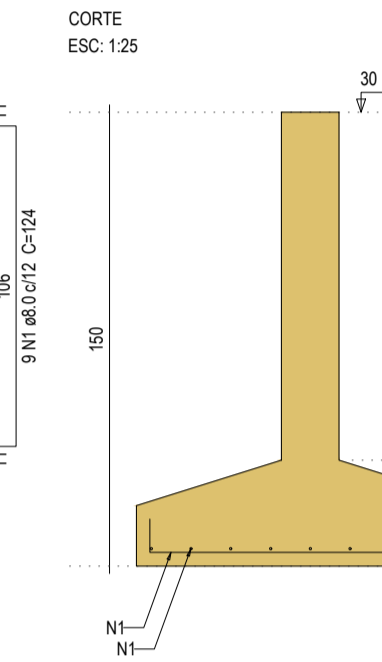
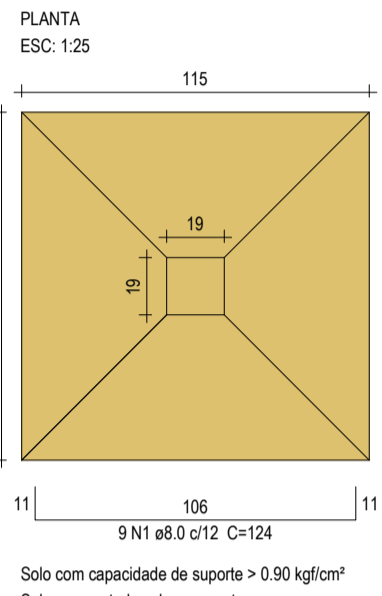
S12=S16



S13=S19



S17



Relação do aço

ELEMENTO	AÇO	N	DIAM (mm)	QUANT	C.LIMIT (cm)	C.TOTAL (cm)
S4	CA50	1	8.0	6	34	564
	CA50	2	8.0	6	89	534
12xS9	CA50	1	8.0	144	99	14256
S10	CA50	1	8.0	18	124	2232
2xS12	CA50	1	8.0	28	114	3192
2xS13	CA50	1	8.0	40	129	5160
8xS14	CA50	1	8.0	96	119	11424
S17	CA50	1	8.0	18	124	2232
3xS20	CA50	1	8.0	36	104	3744

Resumo do aço

AÇO	DIAM (mm)	C.TOTAL (m)	PESO (kg)
CA50	8.0	433.4	171
PESO TOTAL (kg)			171
CA50			171

Volume de concreto (C-30) = 6.2 m³
Área de forma = 23.82 m²

ASSINATURAS E APROVAÇÃO

PROJETISTA: *Leonardo Silveira Lima*
LEONARDO SILVEIRA LIMA
ENGENHEIRO CIVIL - RNP: 9601591087

PROPRIETÁRIO:

PROPRIETÁRIO:
GEOPAC AV. PADRE ANTÔNIO TOMÁS, N.º 2402, SALA 301/302, BARRIO ALDEOTA, FORTALEZA/CE, FONE: 85.3241-5147 | EMAIL: GEOPAC@GEOPAC.COM.BR

PREFEITURA MUNICIPAL DE ARACATI
CERVA:
CONSTRUÇÃO DO CEMITÉRIO MUNICIPAL DE ARACATI
PROJETO:
ESTRUTURAS DE CONCRETO
IDENTIFICAÇÃO DOS DESENHOS:
SAPATAS