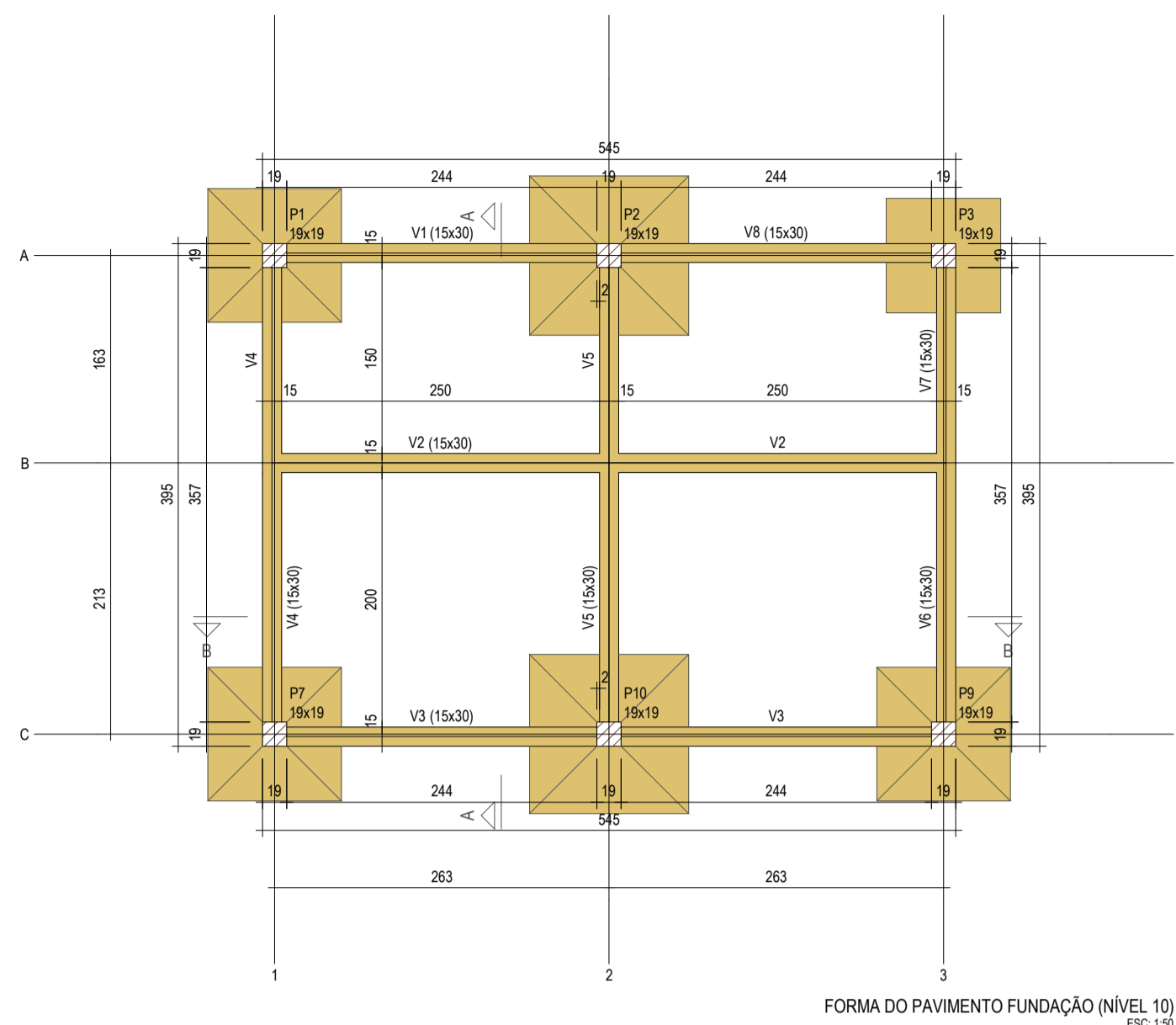


Pilar				Fundação						
Nome	Seção	X	Y	Posição	Nome	Lado B	Lado H	h0 / ha	h1/hb	df
P1	19x19	1773.55	4082.25	A-1 S1	105	105	20	30	150	
P2	19x19	2036.55	4082.25	A-2 S2	125	125	20	30	150	
P3	19x19	2299.55	4082.25	A-3 S3	90	90	25	25	150	
P7	19x19	1773.55	3706.25	B-1 S7	105	105	20	30	150	
P8	19x19	2299.55	3706.25	B-3 S8	105	105	20	30	150	
P10	19x19	2036.55	3706.25	B-2 S10	125	125	20	30	150	



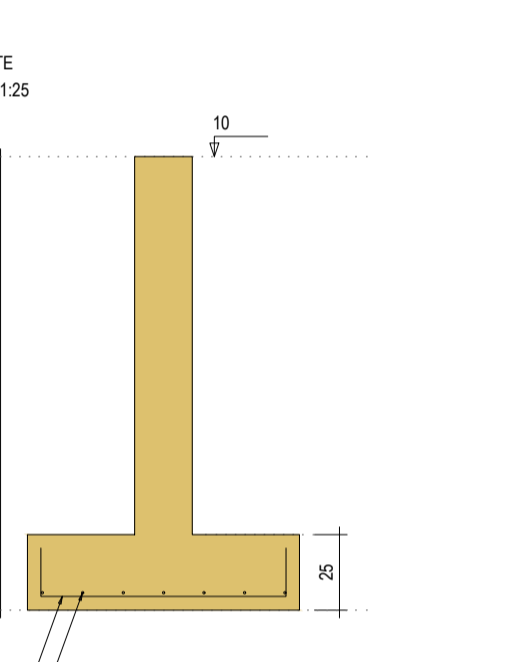
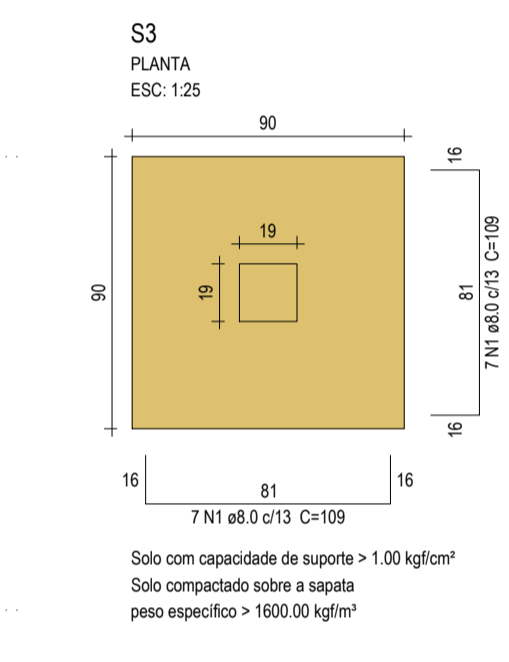
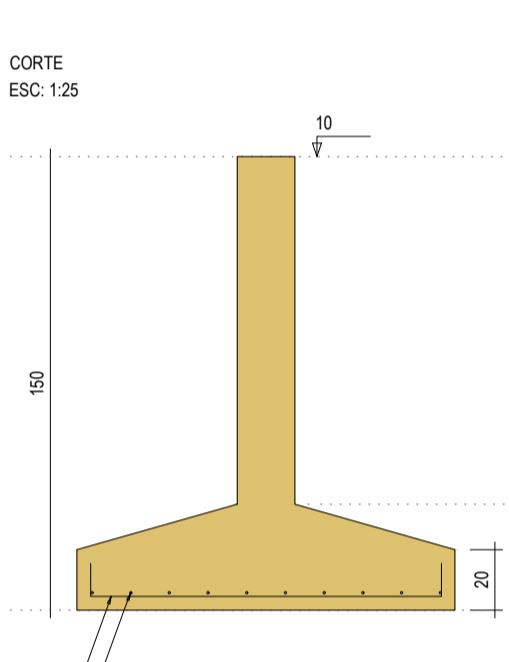
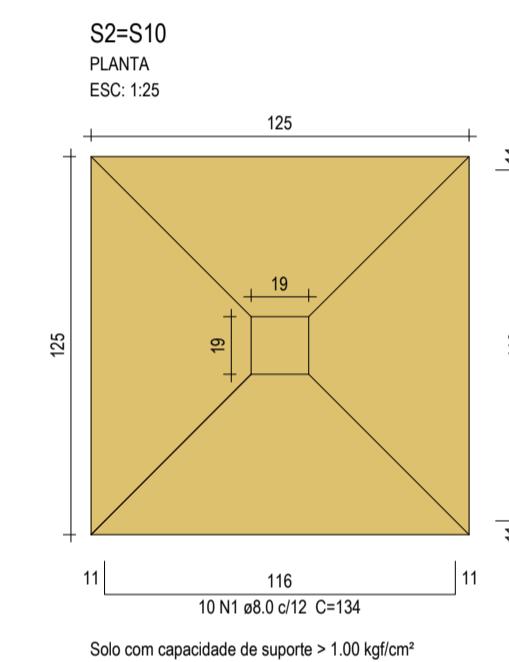
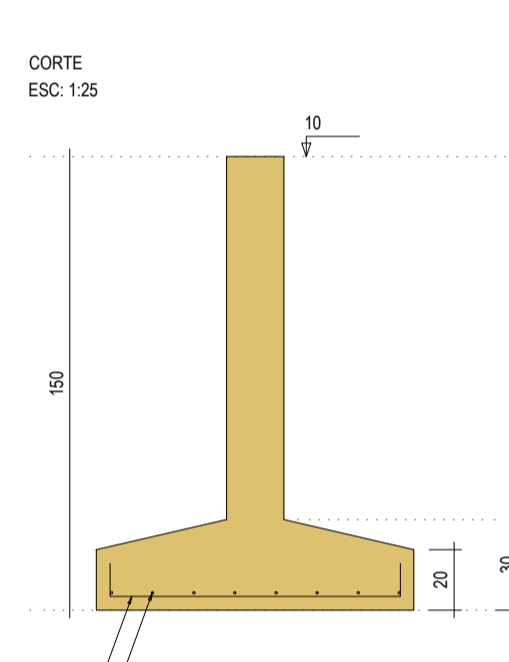
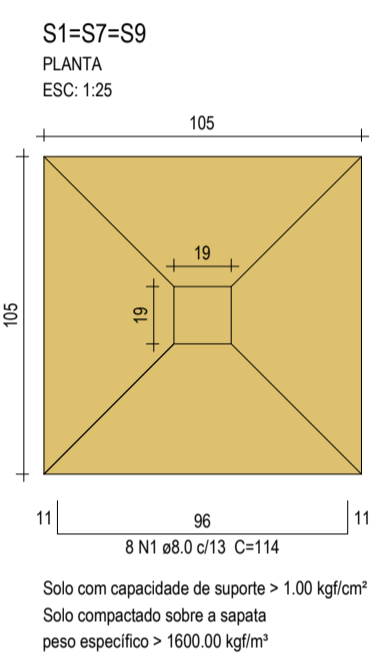
Vigas			
Nome	Seção (cm)	Elevação (cm)	Nível (cm)
V1	15x30	0	10
V2	15x30	0	10
V3	15x30	0	10
V4	15x30	0	10
V5	15x30	0	10
V6	15x30	0	10
V7	15x30	0	10
V8	15x30	0	10

Características dos materiais		
fca	Ecs	
300	27000	

Pilares			
Nome	Seção (cm)	Elevação (cm)	Nível (cm)
P1	19x19	0	10
P2	19x19	0	10
P3	19x19	0	10
P7	19x19	0	10
P8	19x19	0	10
P10	19x19	0	10

Legenda dos pilares	
	Pilar que passa

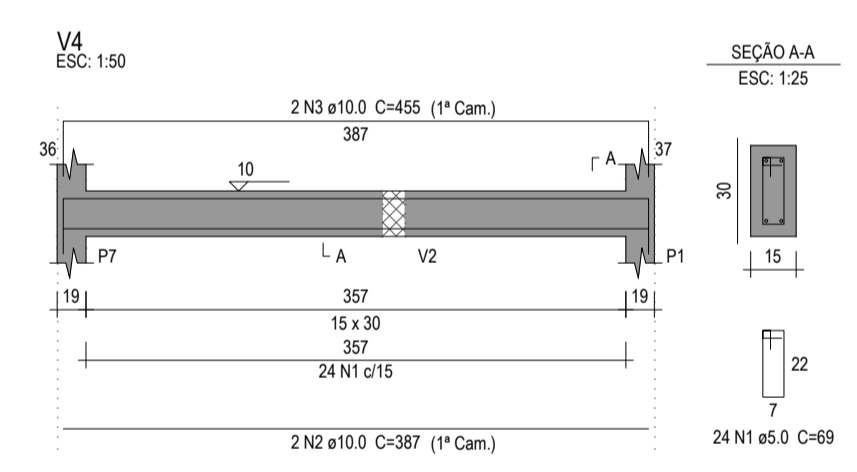
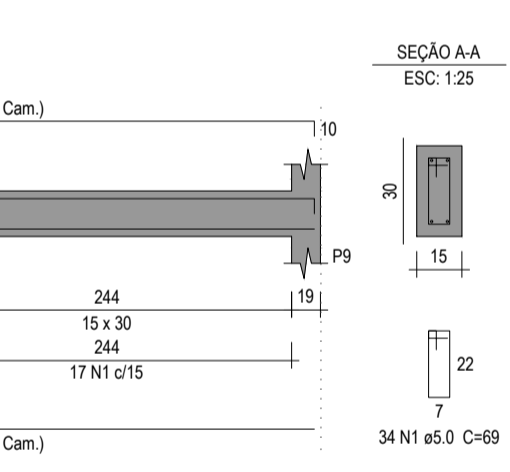
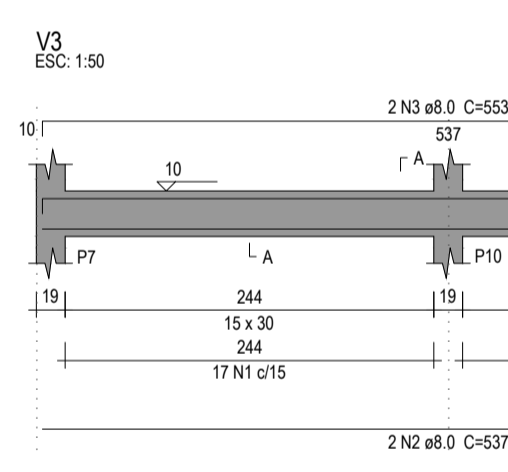
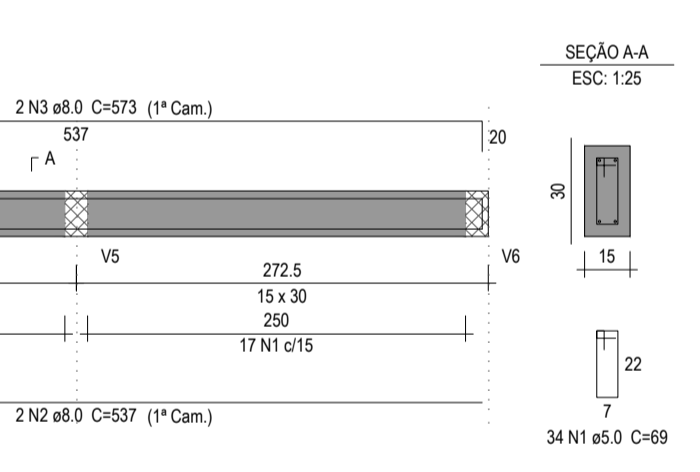
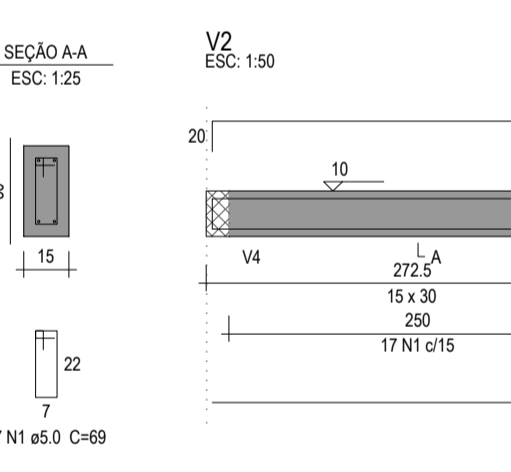
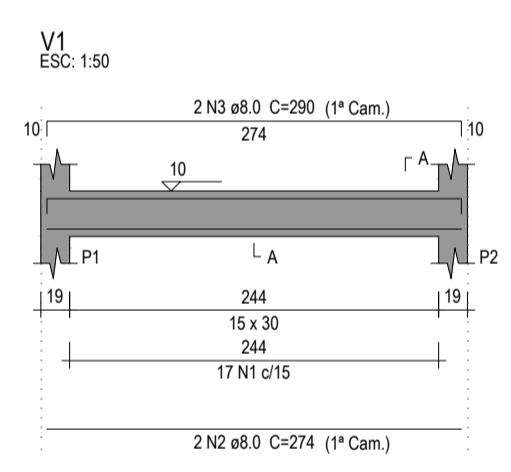
Legenda das vigas e paredes	
	Viga



Relação do aço						
ELEMENTO	AÇO	N	DIAM (mm)	QUANT	C.LUNIT (cm)	C.TOTAL (cm)
3xS1	CA50	1	8.0	48	114	5472
S3	CA50	1	8.0	14	109	1526
2xS10	CA50	1	8.0	40	134	5360

Resumo do aço			
AÇO	DIAM (mm)	C.TOTAL (m)	PESO (kg)
CA50	8.0	123.6	48.8
PESO TOTAL (kg)			
CA50			48.8

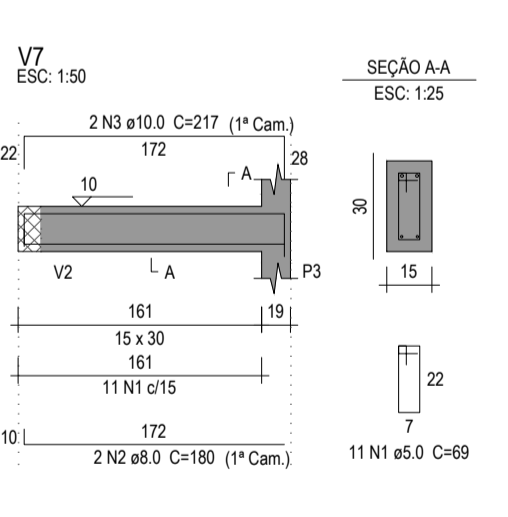
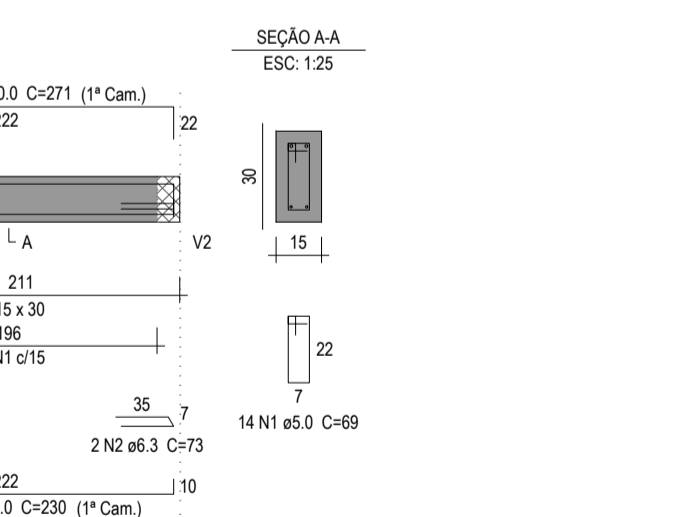
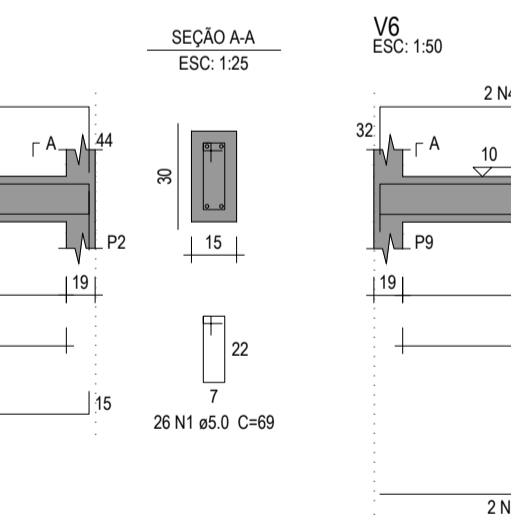
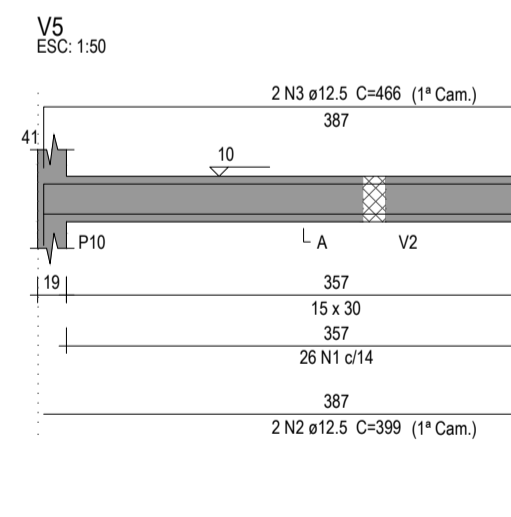
Volume de concreto (C-30) = 1.81 m³
Área de forma = 5.42 m²



Relação do aço						
ELEMENTO	AÇO	N	DIAM (mm)	QUANT	C.LUNIT (cm)	C.TOTAL (cm)
V1	CA60	1	5.0	17	69	1173
	CA50	2	8.0	2	274	548
	CA50	3	8.0	2	290	580
V2	CA60	1	5.0	34	69	2346
	CA50	2	8.0	2	537	1074
	CA50	3	8.0	2	573	1146
V3	CA60	1	5.0	34	69	2346
	CA50	2	8.0	2	537	1074
	CA50	3	8.0	2	553	1106
V4	CA60	1	5.0	24	69	1656
	CA50	2	10.0	2	387	774
	CA50	3	10.0	2	455	910
V5	CA60	1	5.0	26	69	1794
	CA50	2	12.5	2	359	718
	CA50	3	12.5	2	466	932
V6	CA60	1	5.0	14	69	966
	CA50	2	6.3	2	73	146
	CA50	3	8.0	2	230	460
	CA50	4	10.0	2	271	542
V7	CA60	1	5.0	11	69	759
	CA50	2	8.0	2	180	360
	CA50	3	10.0	2	217	434
V8	CA60	1	5.0	17	69	1173
	CA50	2	8.0	4	290	1160

Resumo do aço			
AÇO	DIAM (mm)	C.TOTAL (m)	PESO (kg)
CA50	6.3	1.5	0.4
	8.0	75.1	29.6
	10.0	26.6	16.4
	12.5	17.3	16.7
CA50	5.0	122.2	18.8
PESO TOTAL (kg)			
CA50		63	18.8
CA60			18.8

Volume de concreto (C-30) = 1.16 m³
Área de forma = 19.33 m²



ASSINATURAS E APROVAÇÃO

PROJETISTA: PROPRIETÁRIO:

LEONARDO SILVEIRA LIMA
ENGENHEIRO CIVIL - RFP: 9601591087

APROVAÇÃO:

GEOPAC AV. PADRE ANTÔNIO TOMÁS, N.º 2420, SALA 301/302
BARRIO ALDEOTA, FORTALEZA
FONE: 85.324.5147 | EMAIL: GEOPAC@GEOPAC.COM.BR

PROPRIETÁRIO:
PREFEITURA MUNICIPAL DE ARACATI

PROJETO:
CONSTRUÇÃO DO NÚCLEO DE ATENDIMENTO ESPECIALIZADO E INCLUSÃO

IDENTIFICAÇÃO DOS DESENHOS:
PLANTA DE LOCAÇÃO
SAPATAS
VIGAS DA FUNDAÇÃO

LOCAL:
ARACATI-CE

DATA:
NOVEMBRO/2022

PRIMEIRA:
1/3

DESENHO:
ALIANA FRADO

ESCALA:
INDICADA

CONTROLE:
ARCT 22.47