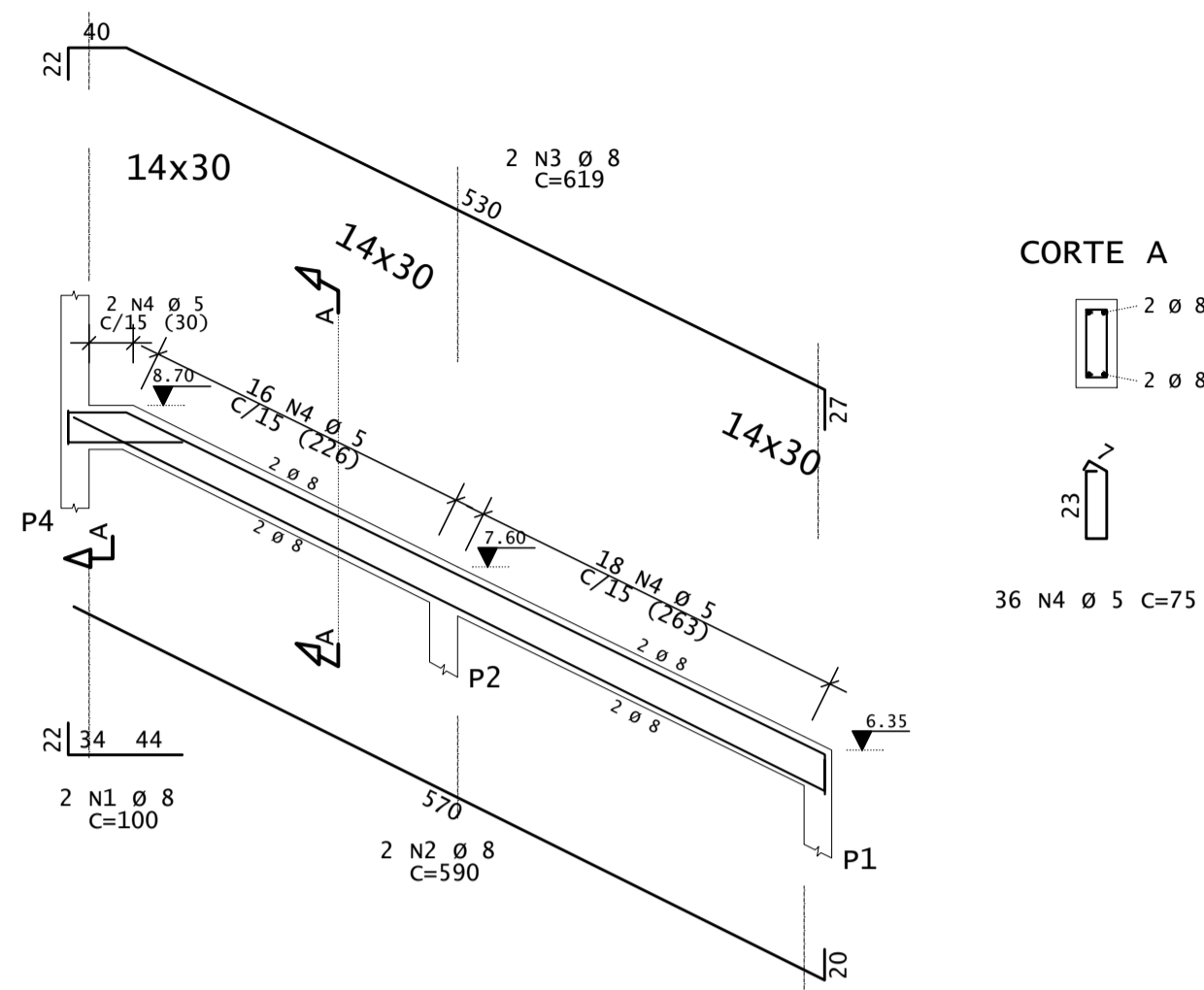
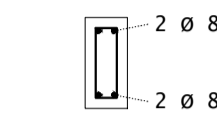


### VR2/VR1

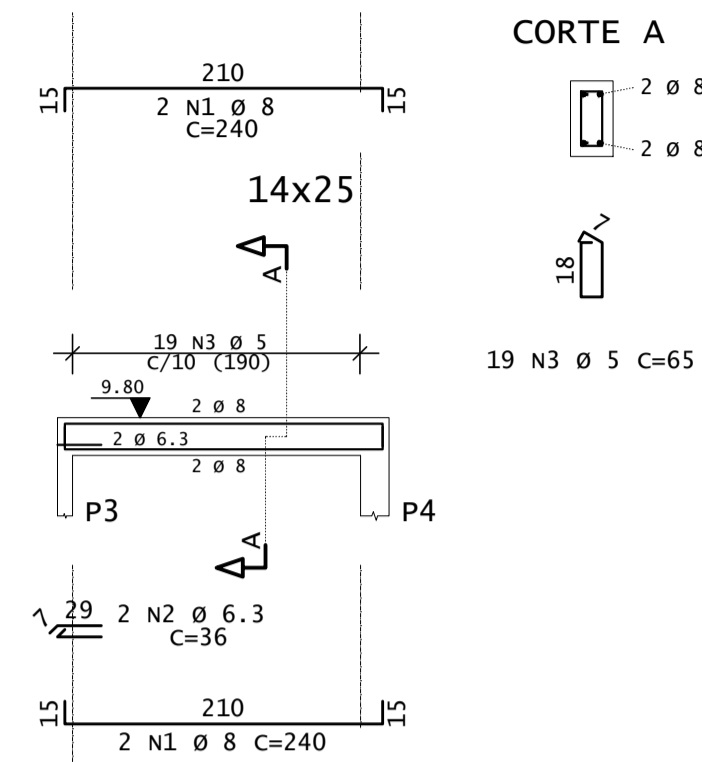


CORTE A

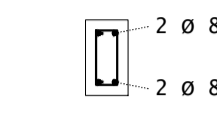


36 N4 Ø 5 C=75

### V1

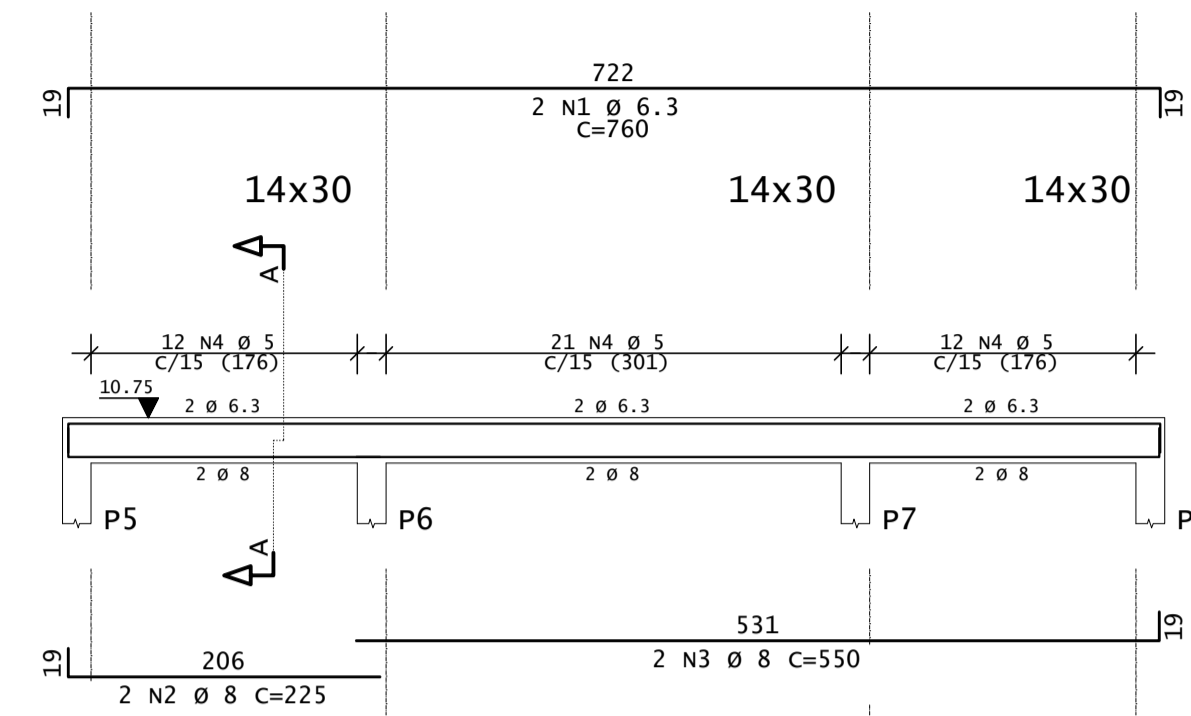


CORTE A

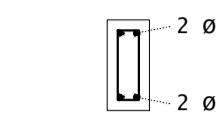


19 N3 Ø 5 C=65

### V2



CORTE A

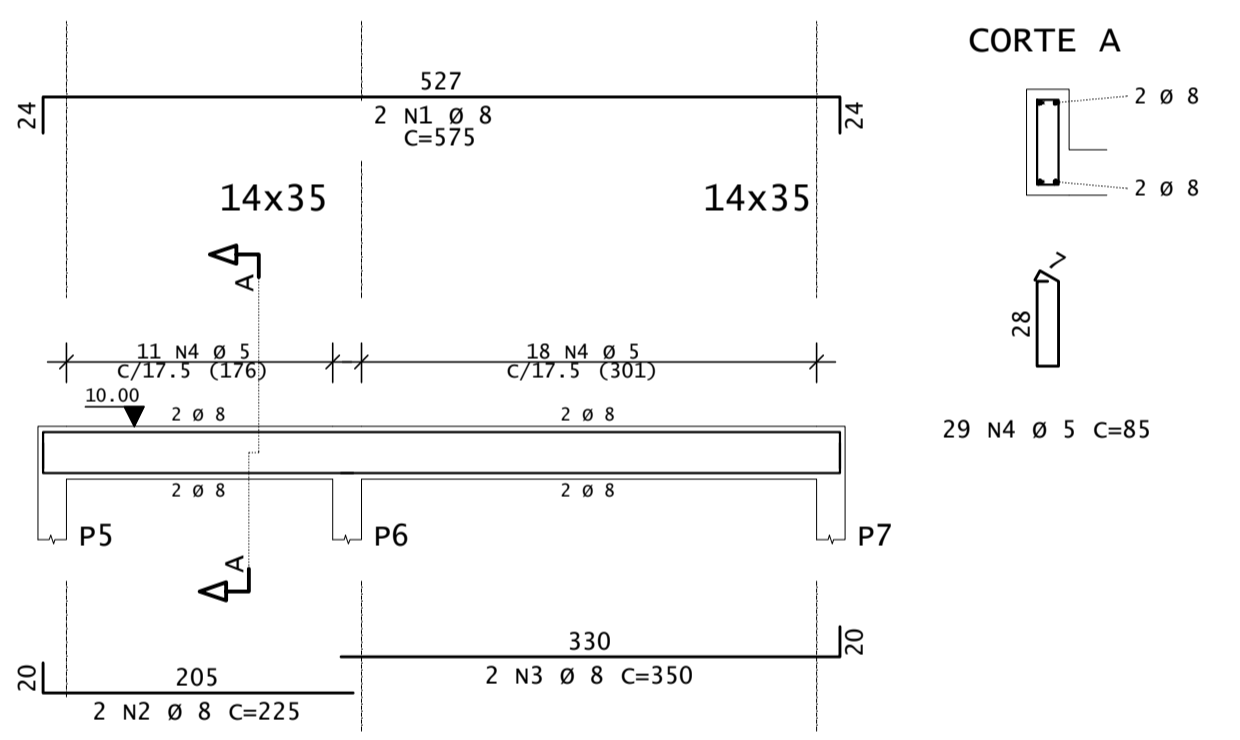


45 N4 Ø 5 C=75

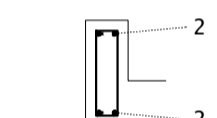
#### DIÂMETROS DE CURVATURA

Ø	8	10	12	16	20	22	25
db (mm)	4	5	6.5	8	16	18	20

### V3

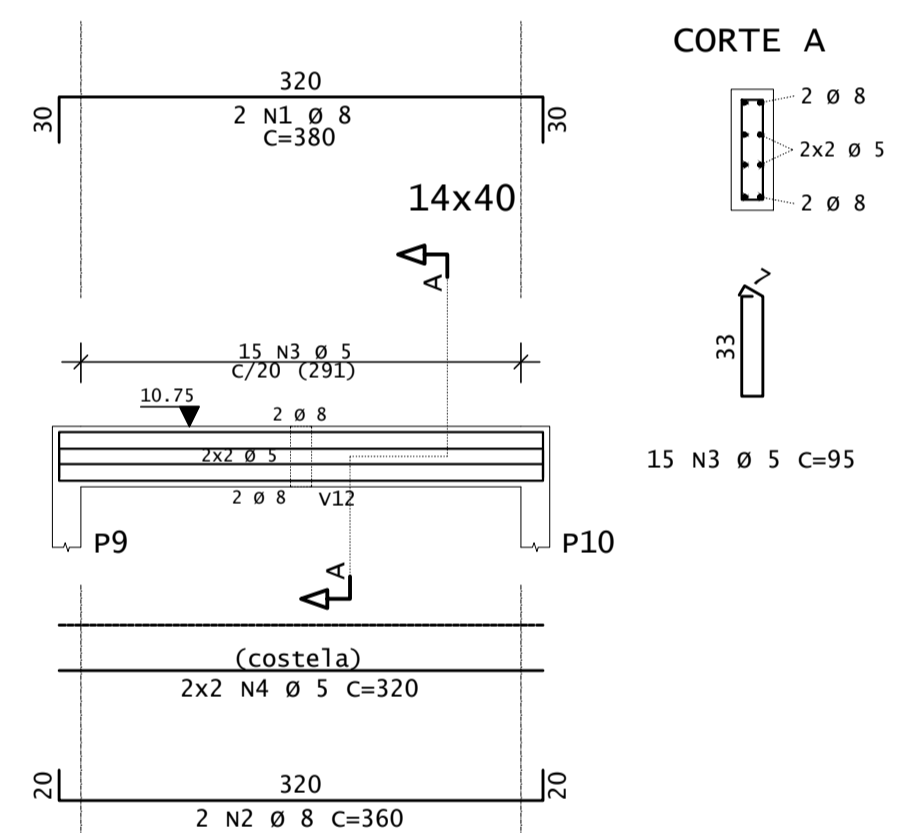


CORTE A

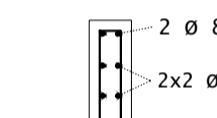


29 N4 Ø 5 C=85

### V4

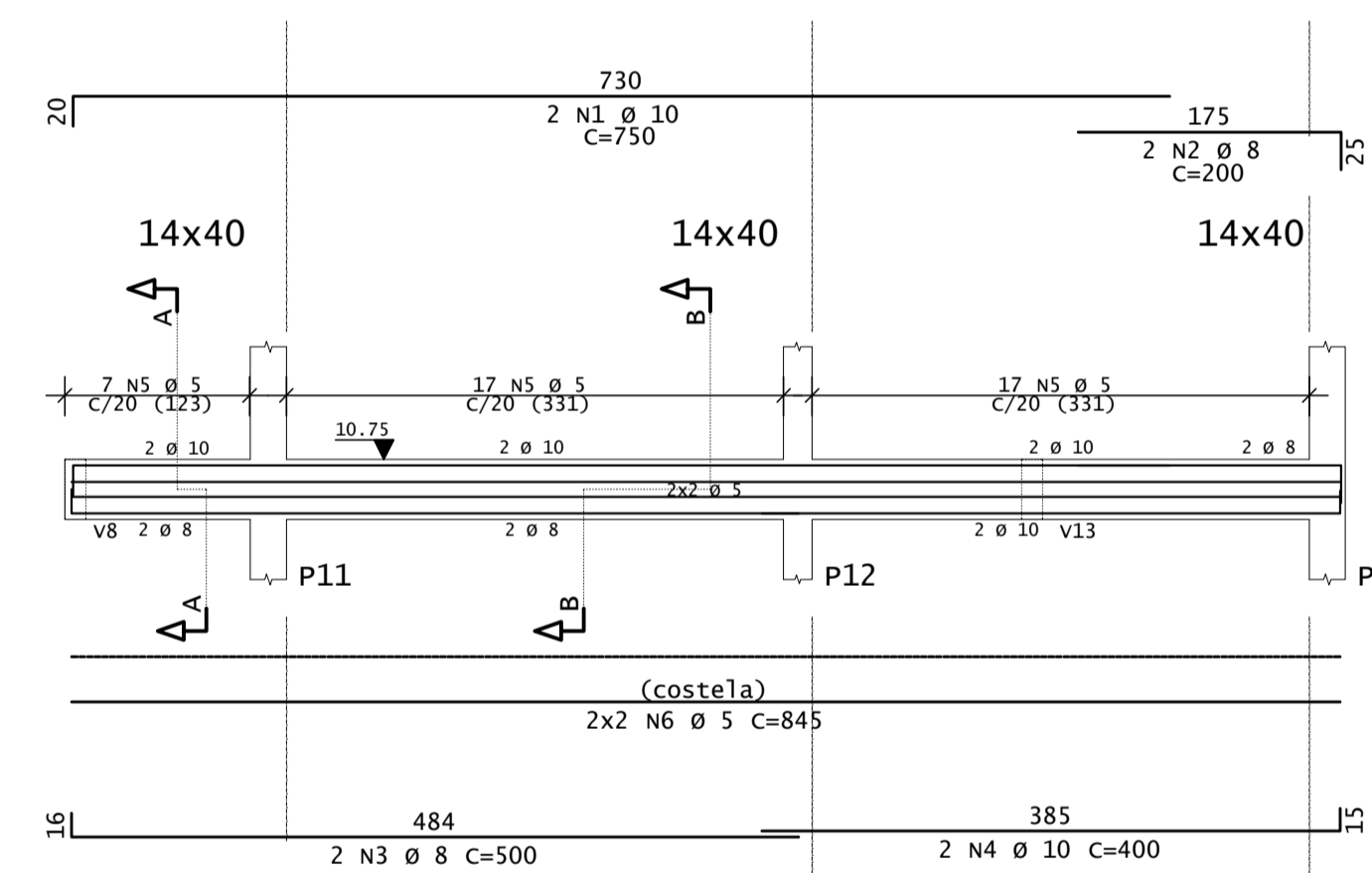


CORTE A

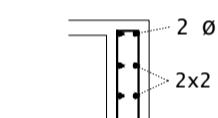


15 N3 Ø 5 C=95

### V5

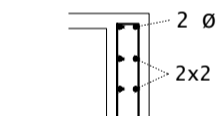


CORTE A



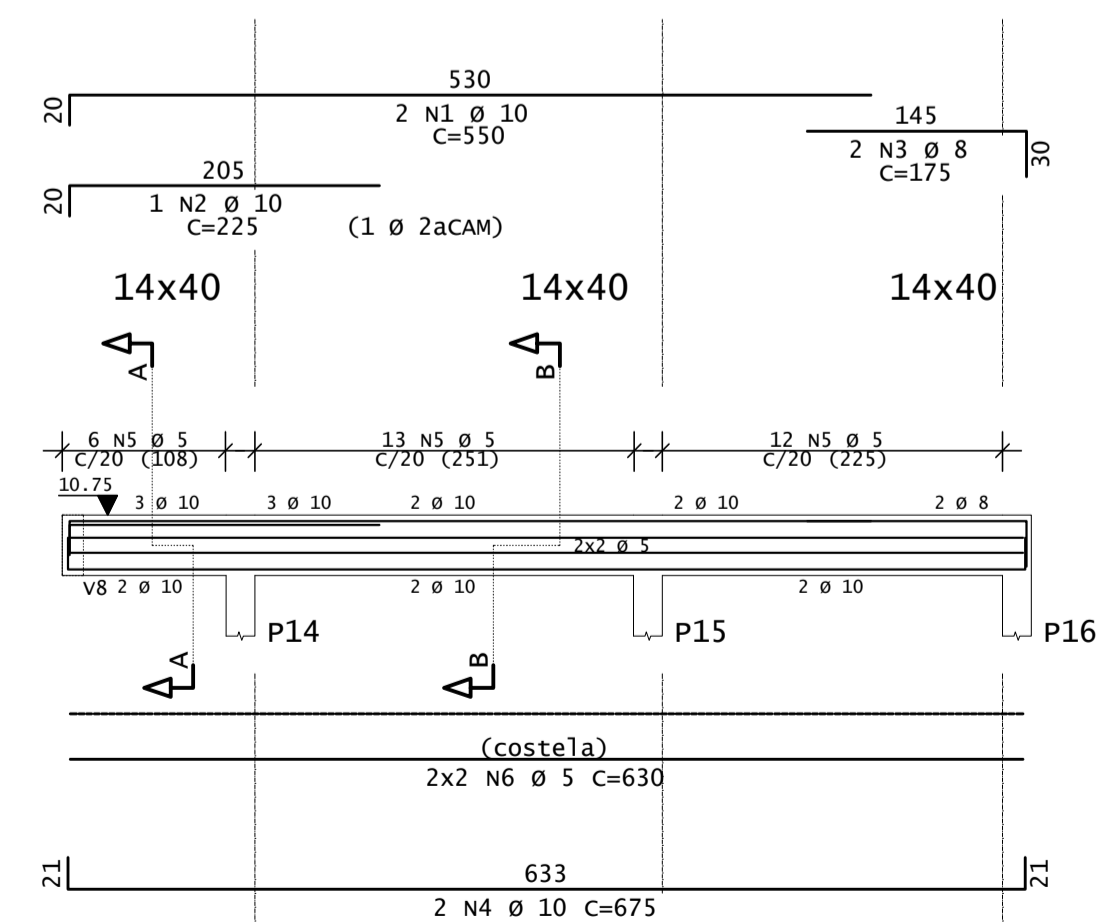
7 N5 Ø 5 C=95

CORTE B

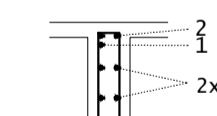


34 N5 Ø 5 C=95

### V6

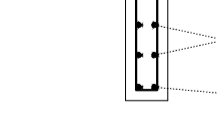


CORTE A



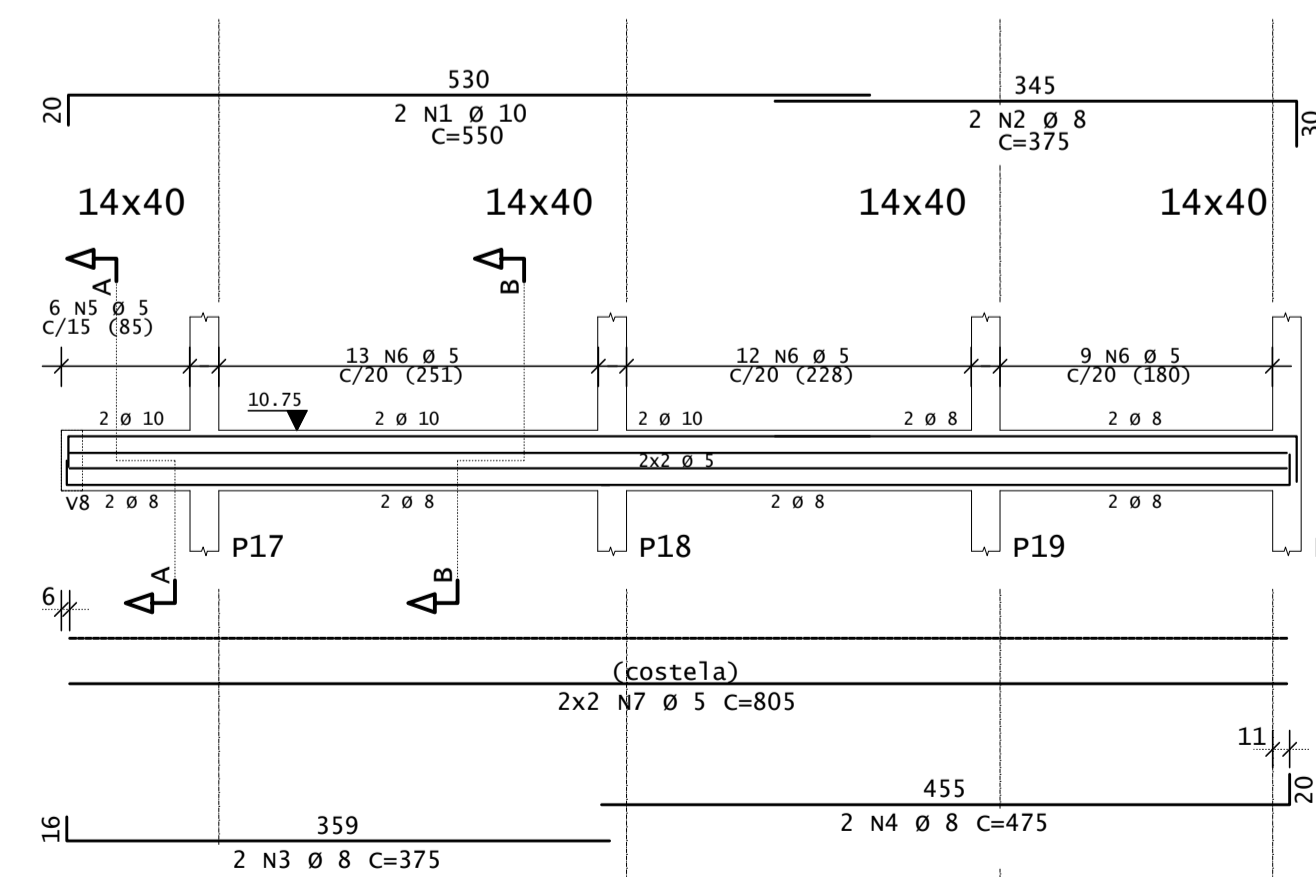
6 N5 Ø 5 C=95

CORTE B

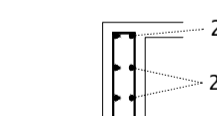


25 N5 Ø 5 C=95

### V7

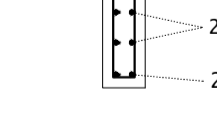


CORTE A



6 N5 Ø 5 C=102

CORTE B

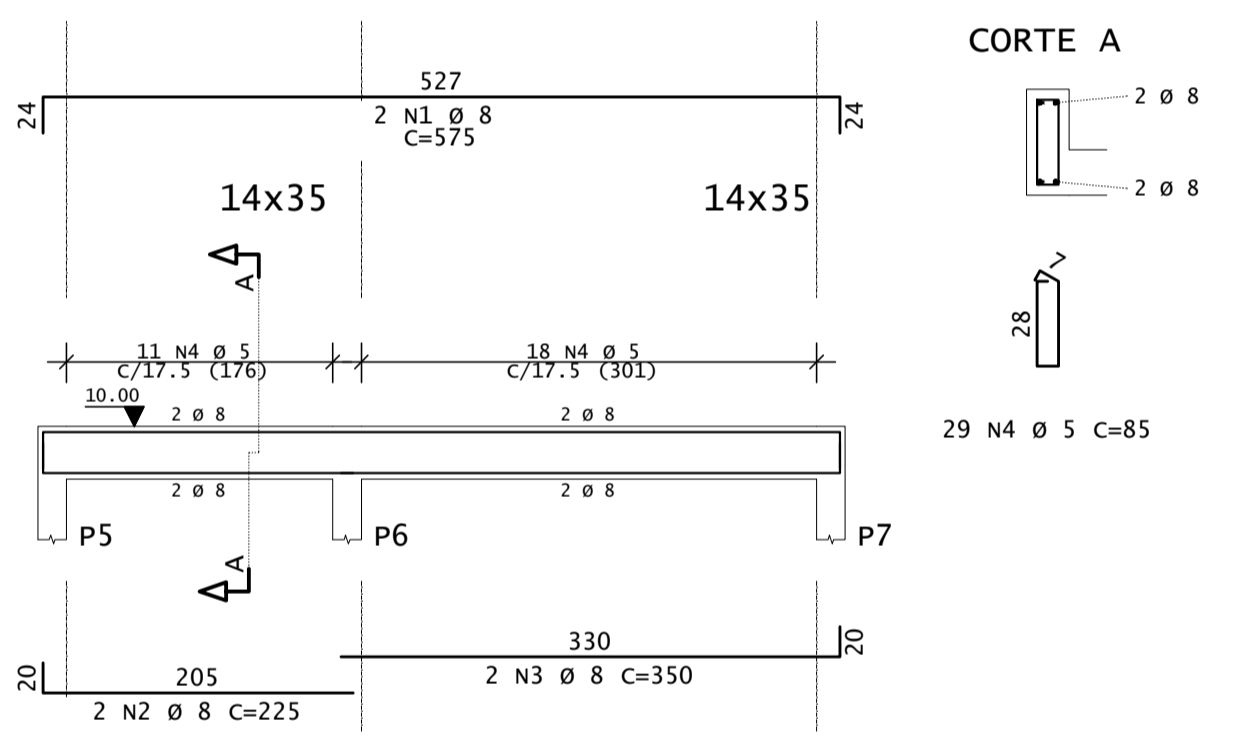


34 N6 Ø 5 C=95

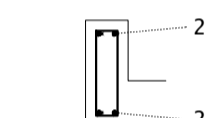
AÇO	POS	BIT	QUANT	COMPRIMENTO	
				UNIT	TOTAL
mm					
cm					
<b>VR2/VR1</b>					
50	1	8	2	100	200
50	8	590	2	1180	1180
50	3	8	2	619	1238
60	4	5	36	75	2700
<b>V1</b>					
50	1	8	4	240	960
50	3	6.3	19	65	1235
<b>V2</b>					
50	1	6.3	2	760	1520
50	2	8	2	225	450
50	3	8	2	350	1100
60	4	5	45	75	3375
<b>V3</b>					
50	1	8	2	575	1150
50	2	8	2	360	720
50	3	8	2	350	700
60	4	5	29	85	2465
<b>V4</b>					
50	1	8	2	380	760
50	2	8	2	360	720
60	3	5	15	95	1425
60	4	5	4	320	1280
<b>V5</b>					
50	1	10	2	750	1500
50	2	8	2	700	1400
50	3	8	2	500	1000
50	4	10	2	400	800
60	5	5	41	95	3895
60	6	5	4	845	3380
<b>V6</b>					
50	1	10	2	550	1100
50	2	10	1	225	225
50	3	8	2	175	350
50	4	10	2	675	1350
60	5	5	31	95	2945
60	6	5	4	630	2520
<b>V7</b>					
50	1	10	2	550	1100
50	2	8	2	375	750
50	3	8	2	375	750
50	4	8	2	475	950
60	5	5	6	102	612
60	6	5	34	95	3230
60	7	5	4	805	3220

RESUMO DE AÇO			
AÇO	BIT	COMPR	PESO
		m	kgf
		m	kgf
60	5	323	50
50	6.3	16	4
50	8	131	52
50	10	61	37
<b>Peso Total</b>		<b>60</b>	<b>50 kgf</b>
<b>Peso Total</b>		<b>50</b>	<b>93 kgf</b>

### V3

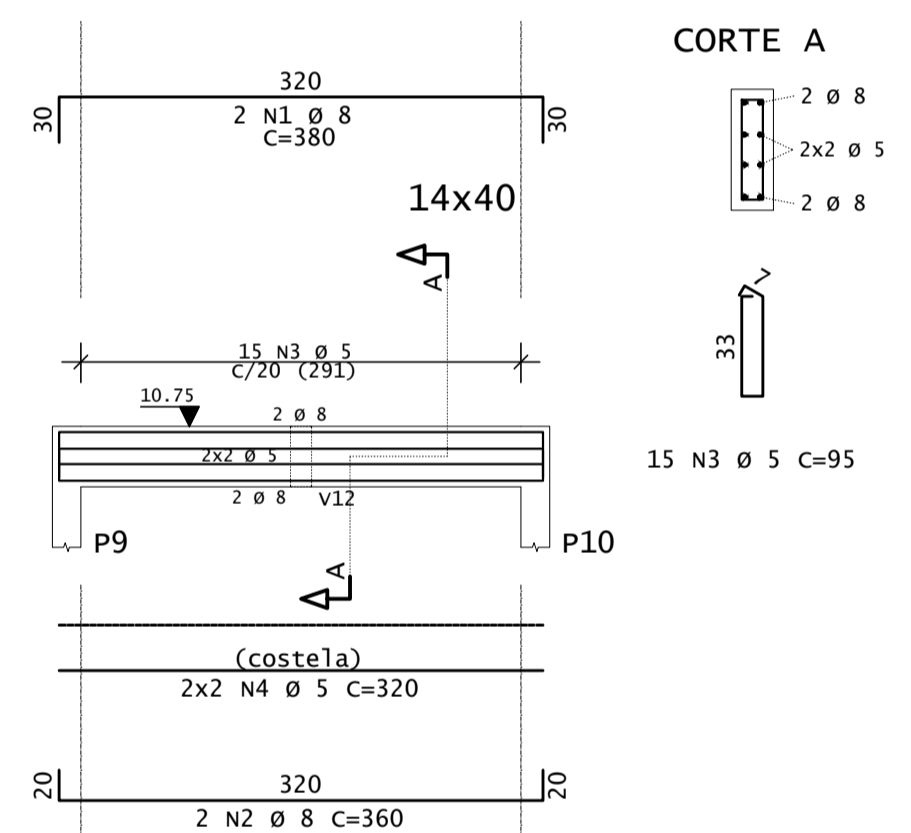


CORTE A

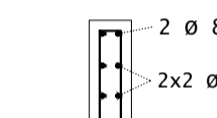


29 N4 Ø 5 C=85

### V4

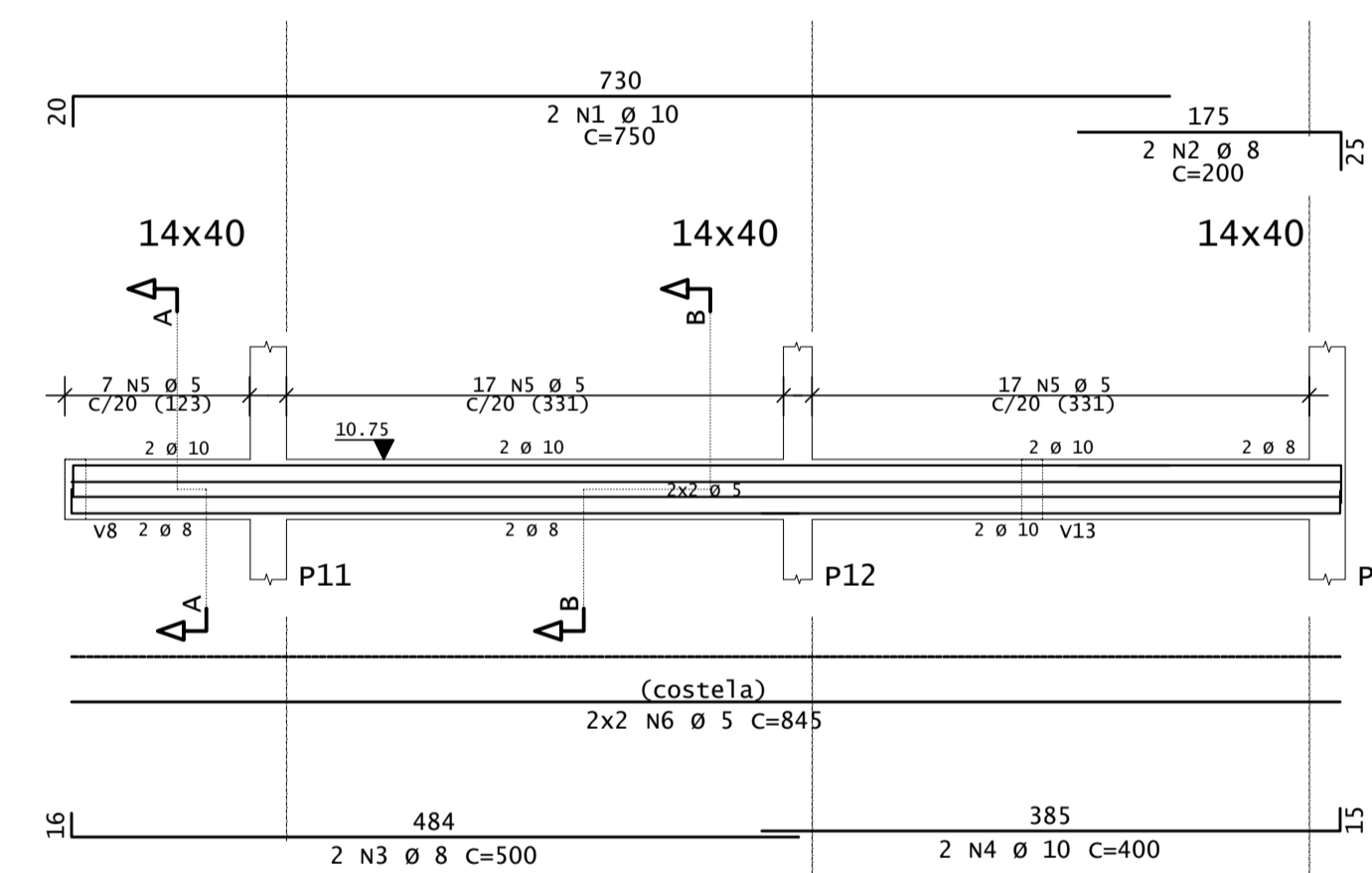


CORTE A

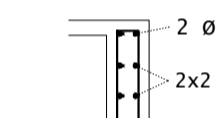


15 N3 Ø 5 C=95

### V5

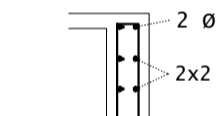


CORTE A



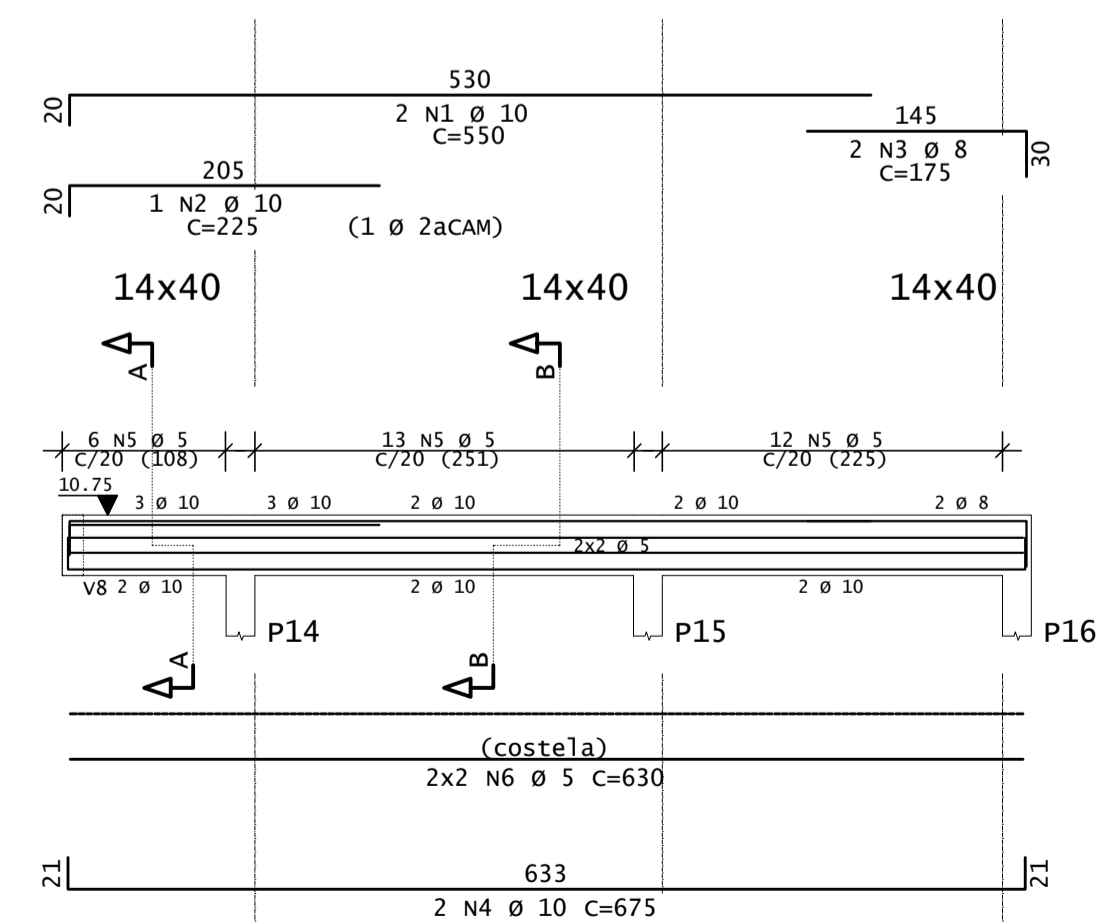
7 N5 Ø 5 C=95

CORTE B

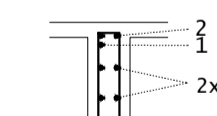


34 N5 Ø 5 C=95

### V6

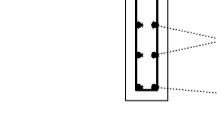


CORTE A



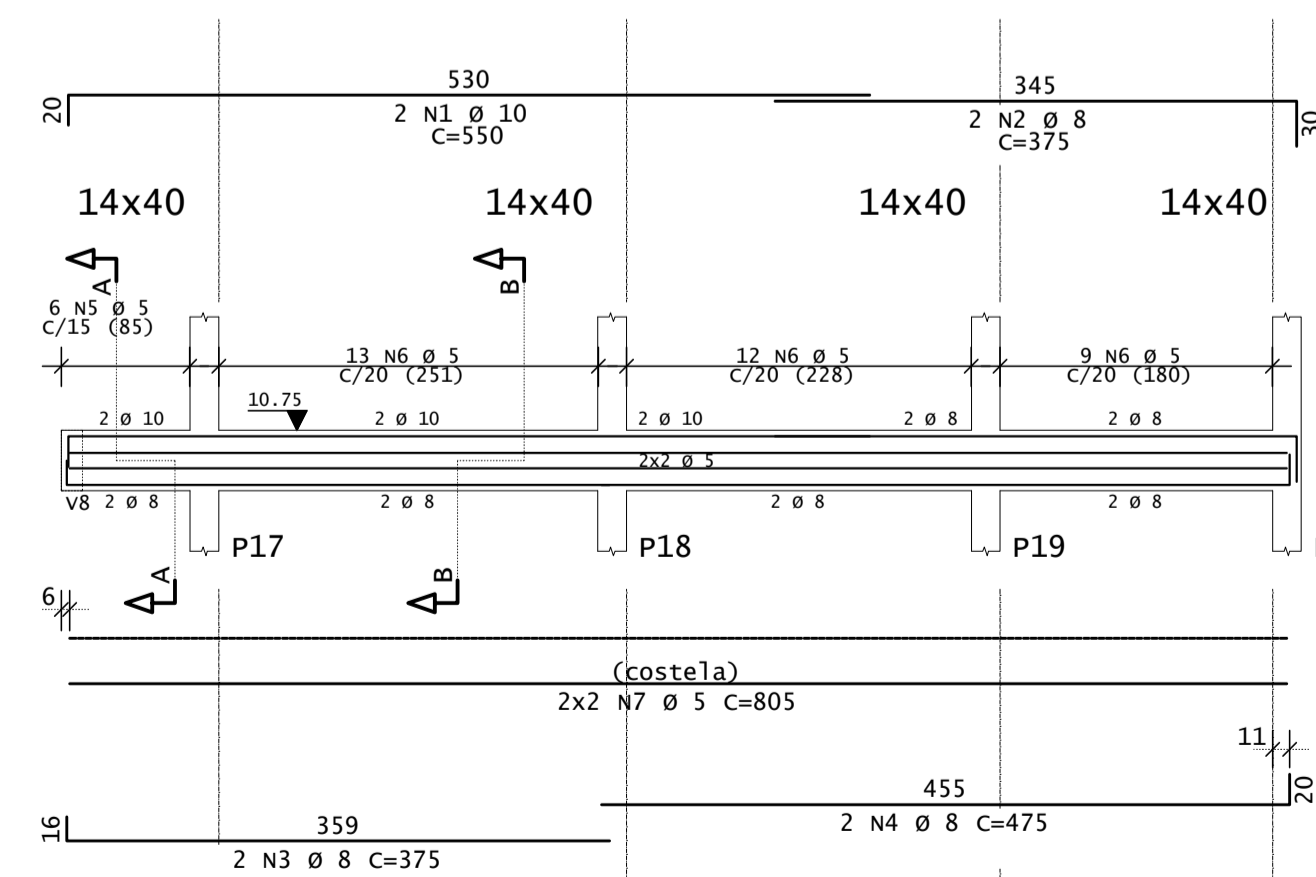
6 N5 Ø 5 C=95

CORTE B

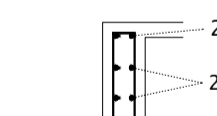


25 N5 Ø 5 C=95

### V7

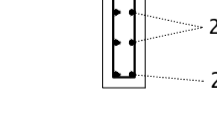


CORTE A



6 N5 Ø 5 C=102

CORTE B



34 N6 Ø 5 C=95

REV	DATA	DESCRIÇÃO
00	14/07/2022	MONTAGEM INICIAL

#### ASSINATURAS E APROVAÇÃO

PROPRIETÁRIO: LEONARDO SILVEIRA LIMA ENGENHEIRO CIVIL - RNP: 091581067

APROVAÇÃO:

#### GEO PAC

AV. PADRE ANTÔNIO TOMAS, N° 240, SALAS 301/302, BARRIO ALBERTA, FORTALEZA, CE, 60201-900. FONE: (85) 3241-1141. E-MAIL: GEO.PAC@GEO.PAC.COM.BR

PROPRIETÁRIO: PREFEITURA MUNICIPAL DE ARACATI

OBJETO: CONSTRUÇÃO DA PRAÇA E CHUVEIRO DE MAJORLÂNDIA

PROJETO DE ESTRUTURAS EM CONCRETO

ARMADURA

IDENTIFICAÇÃO DOS DESENHOS: 01\_COBERTA - VIGAS - VR1, VR2, V1 A V7

LOCAL: MARJORLÂNDIA - ARACATI DATA: JULHO/2022 FOLHA: 11/13

PROJETADE: MVM/SCS ESCALA: 1:50 - 1:25 CONTROLE: C22-25