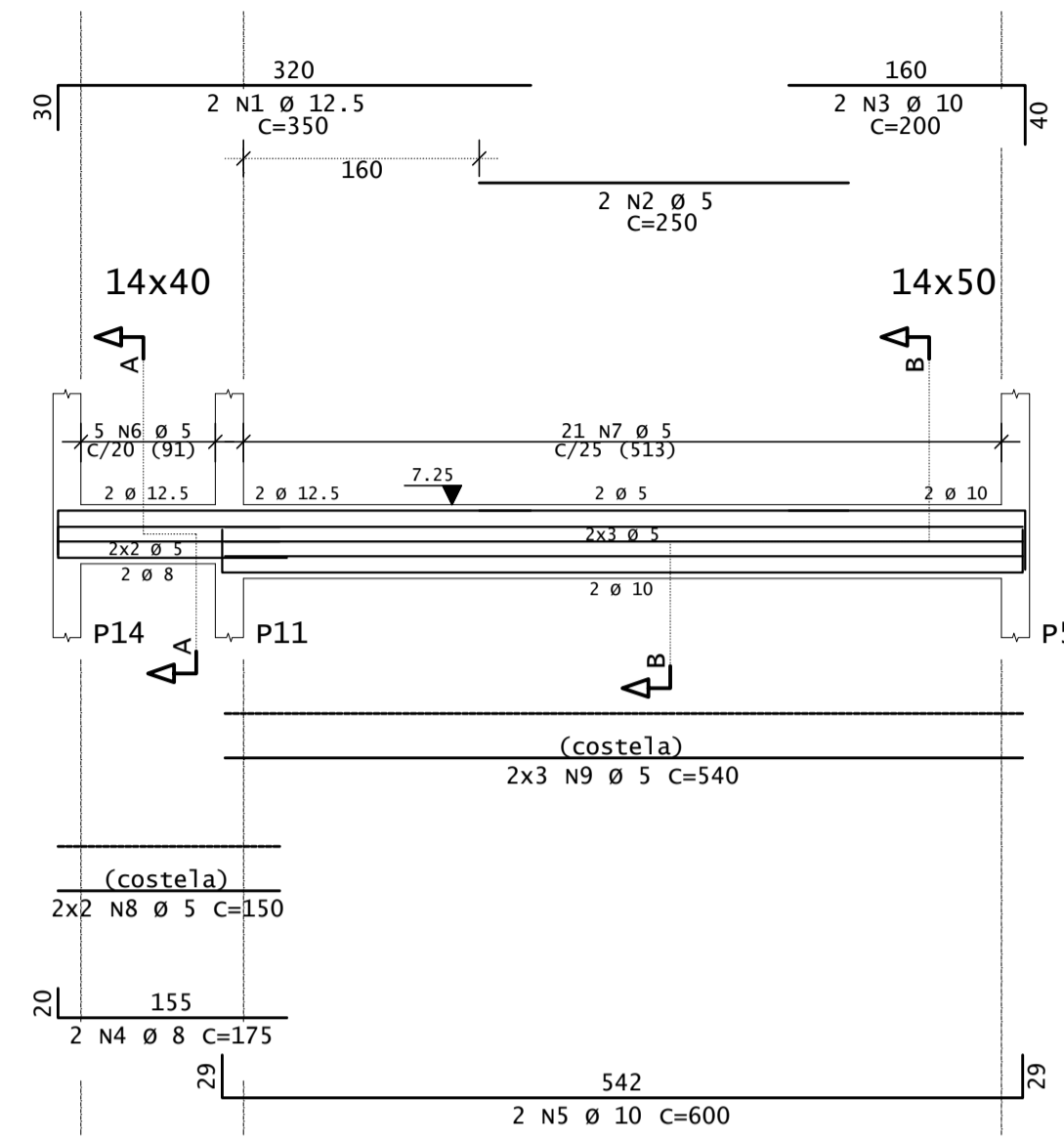
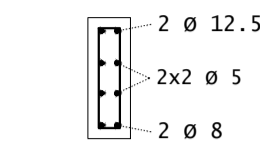


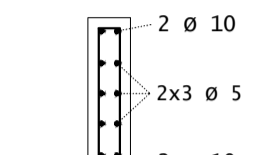
V9



CORTE A



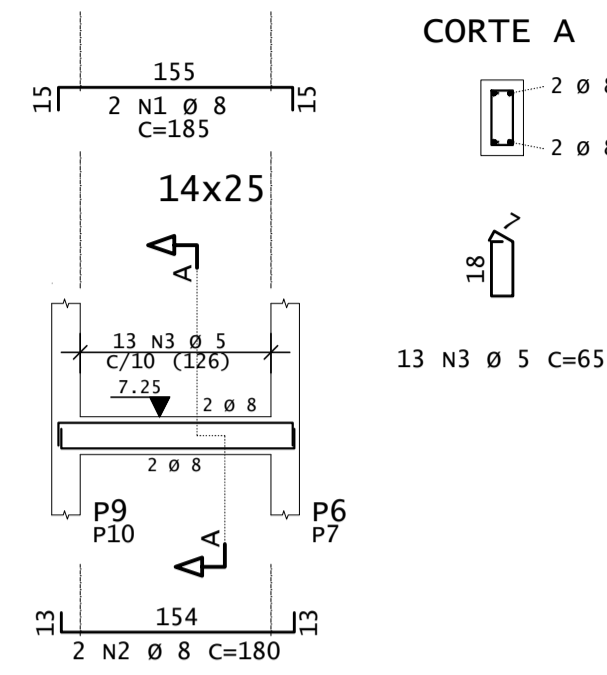
CORTE B



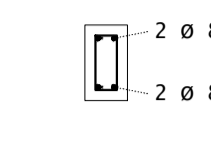
21 N7 Ø 5 C=115



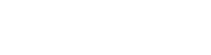
V10=V14



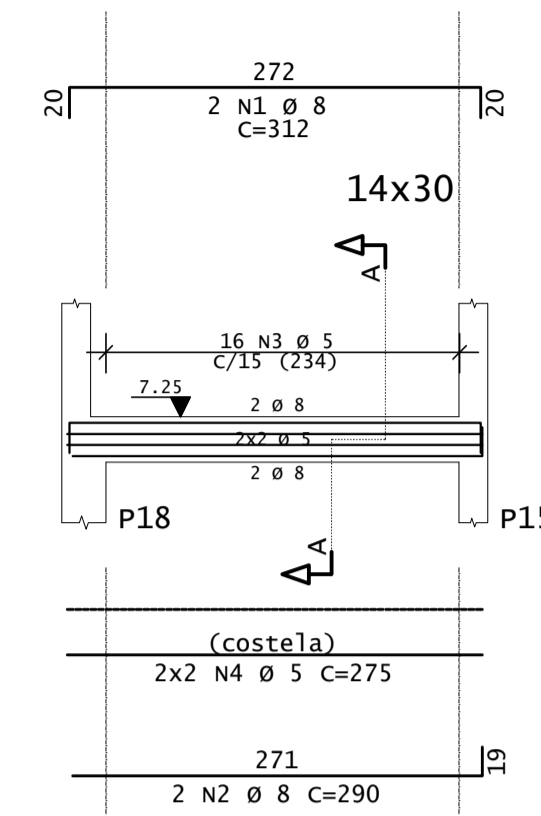
CORTE A



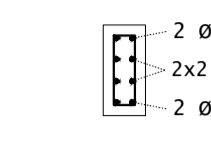
13 N3 Ø 5 C=65



V11



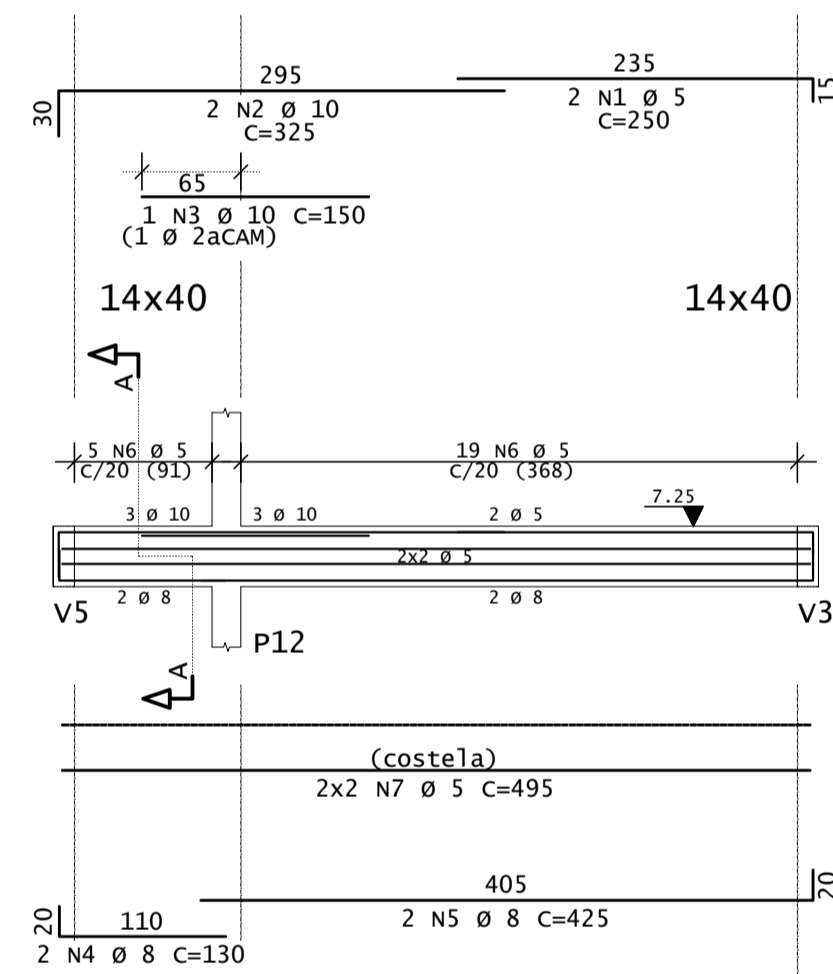
CORTE A



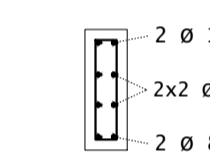
16 N3 Ø 5 C=75



V12



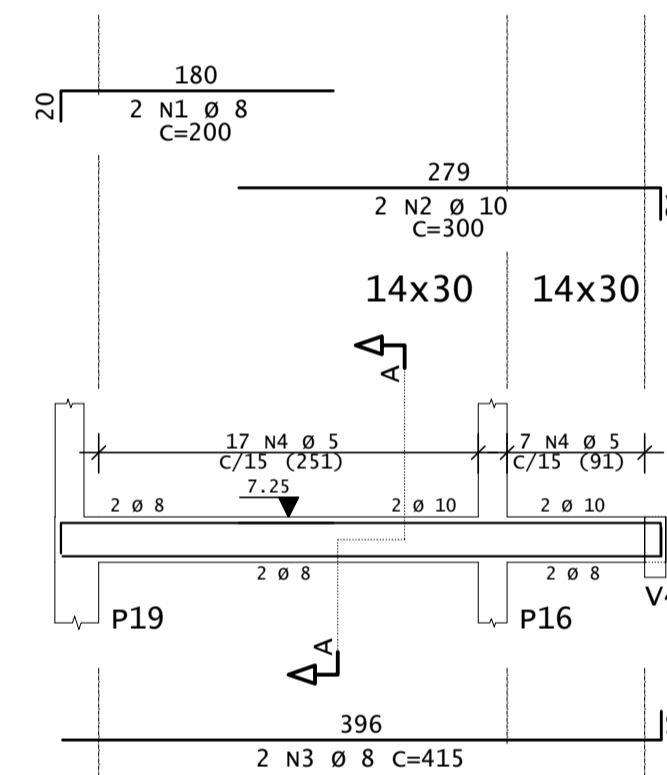
CORTE A



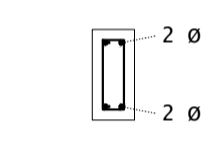
24 N6 Ø 5 C=95



V13



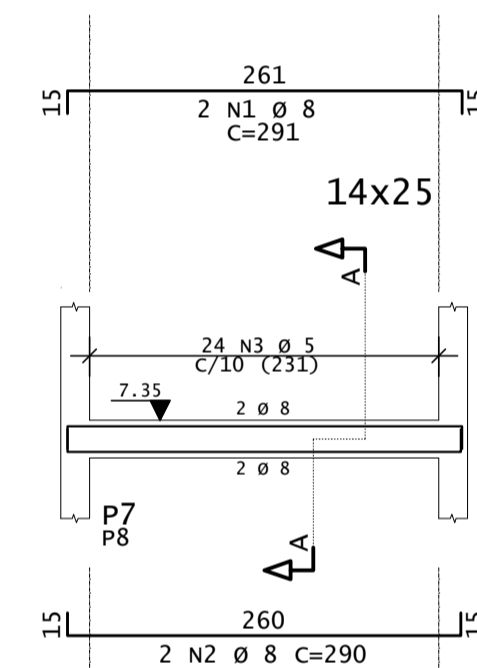
CORTE A



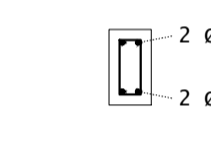
24 N4 Ø 5 C=75



V15=V17



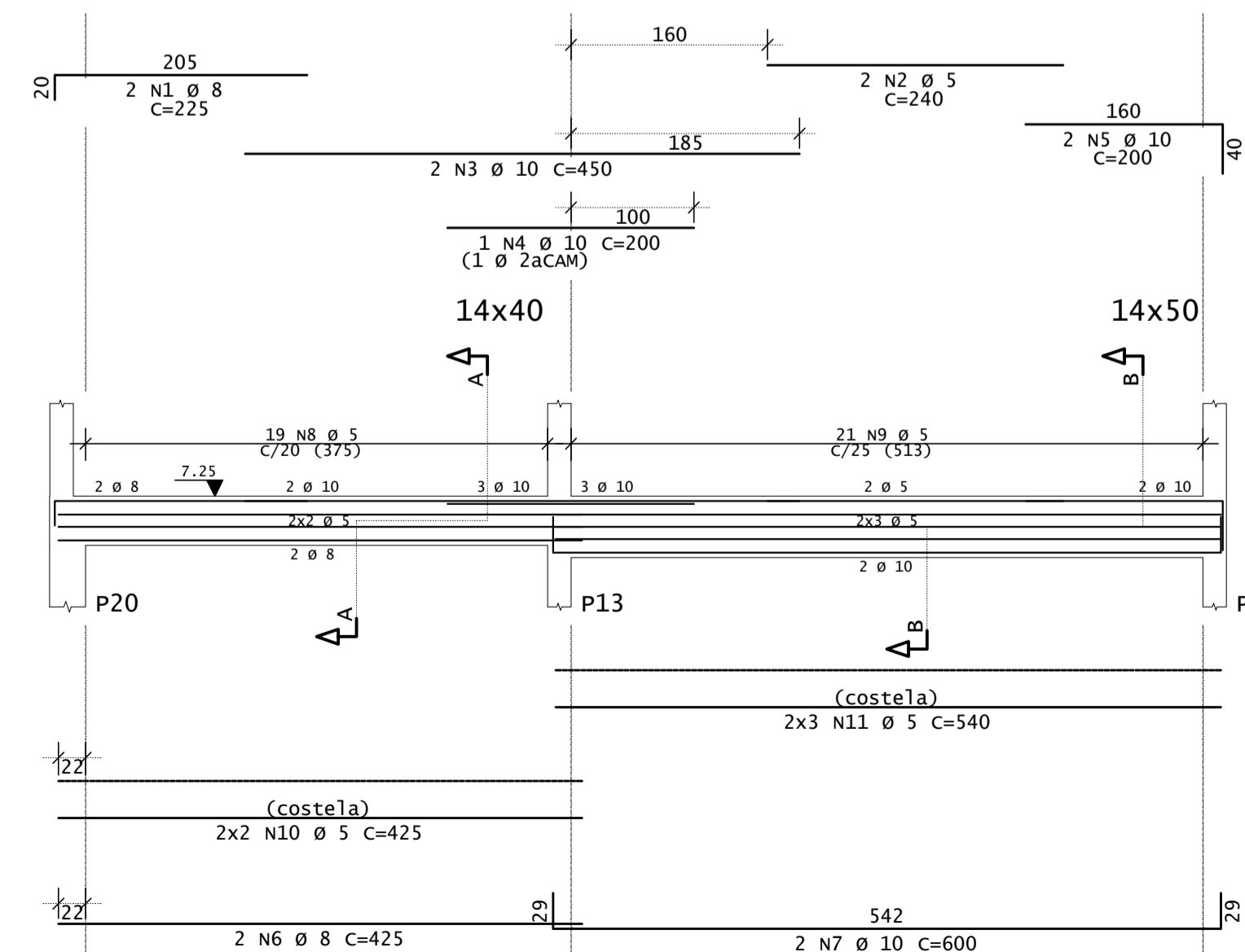
CORTE A



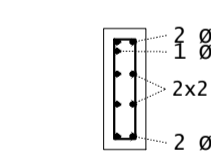
24 N3 Ø 5 C=65



V16



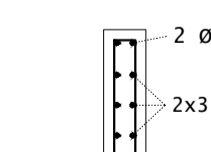
CORTE A



19 N8 Ø 5 C=95



CORTE B



21 N9 Ø 5 C=115



DIÂMETROS DE CURVATURA							
Ø	8	10	12 ¹	16	20	22 ¹	25
db	4	5	6 ⁵	8	16	18	20

AÇO	POS	BIT	QUANT	COMPRIMENTO			
				UNIT	TOTAL		
		mm		cm	cm		
V9	50	1	12.5	2	350	700	
	60	2	5	2	250	500	
	50	3	10	2	200	400	
	50	4	8	2	175	350	
	50	5	10	2	600	1200	
	60	6	5	5	95	475	
	60	7	5	21	115	2415	
	60	8	5	4	150	600	
	60	9	5	6	540	3240	
V10=V14	(x2)	50	1	8	4	185	740
		50	2	8	4	180	720
		60	3	5	26	65	1690
V11	50	1	8	2	312	624	
	50	2	8	2	290	580	
	60	3	5	16	75	1200	
	60	4	5	4	275	1100	
V12	60	1	5	2	250	500	
	50	2	10	2	325	650	
	50	3	10	1	150	150	
	50	4	8	2	130	260	
	50	5	8	2	425	850	
	60	6	5	24	95	2280	
	60	7	5	4	495	1980	
V13	50	1	8	2	200	400	
	50	2	10	2	300	600	
	50	3	8	2	415	830	
	60	4	5	24	75	1800	
V15=V17	(x2)	50	1	8	4	291	1164
		50	2	8	4	290	1160
		60	3	5	48	65	3120
V16	50	1	8	2	225	450	
	60	2	5	2	240	480	
	50	3	10	2	450	900	
	50	4	10	1	200	200	
	50	5	10	2	200	400	
	50	6	8	2	425	850	
	50	7	10	2	600	1200	
	60	8	5	19	95	1805	
	60	9	5	21	115	2415	
	60	10	5	4	425	1700	
	60	11	5	6	540	3240	

RESUMO DE AÇO			
AÇO	BIT	COMPR	PESO
	mm	m	kgf
60	5	305	47
50	8	90	35
50	10	57	35
50	12.5	7	7
Peso Total		60	47 kgf
Peso Total		50	77 kgf

REV	DATA	DESCRIÇÃO
00	14/07/2022	MONTAGEM INICIAL

ASSINATURAS E APROVAÇÃO	
PROJETISTA	PROPRIETÁRIO
 LEONARDO SILVEIRA LIMA ENGENHEIRO CIVIL - RNP: 091581067	

PREFEITURA MUNICIPAL DE ARACATI	
PROPRIETÁRIO	
CONSTRUÇÃO DA PRAÇA E CHUVEIRÃO DE MAJORLÂNDIA	
PROJETO DE ESTRUTURAS EM CONCRETO	
IDENTIFICAÇÃO DOS DESENHOS: 01 - TERREDO 2 - VIGAS: V9 A V17	

GEO PAC		
AV. PADRE ANTÔNIO TOMAS, N° 240, SALAS 301/302, BARRO ALZHEIRA, FORTALEZA/CE		
FONE: (85) 3341-1341 / E-MAIL: GEO@GEO.PAC.COM.BR		
LOCAL: MAJORLÂNDIA - ARACATI	DATA: JULHO/2022	FOLHA: 08/13
PROJETADO: JMYM/SCS	ESCALA: 1:50 - 1:25	CONTROLE: C22-25