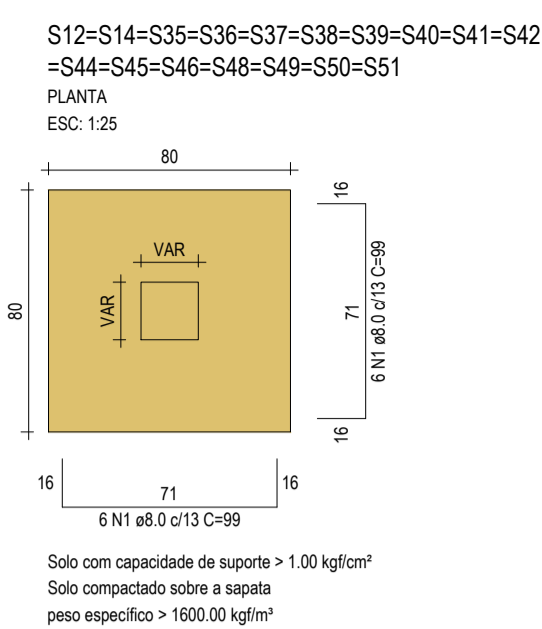
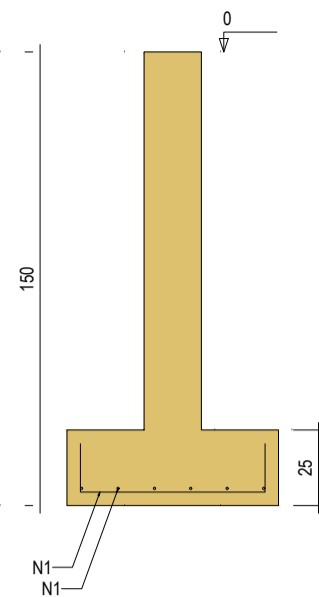
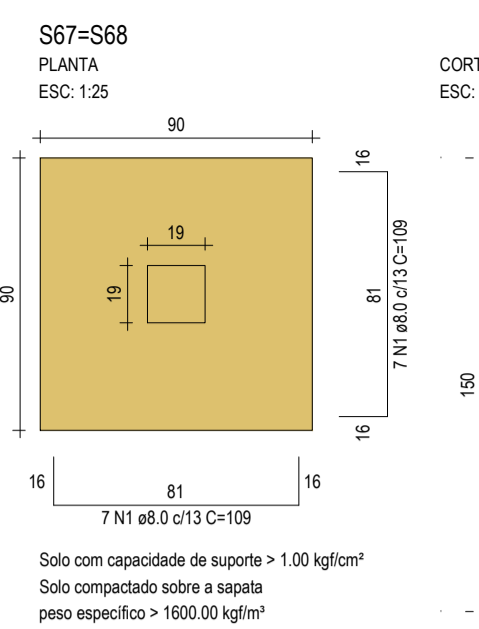
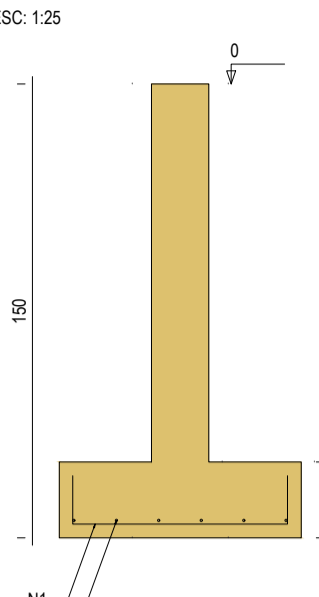


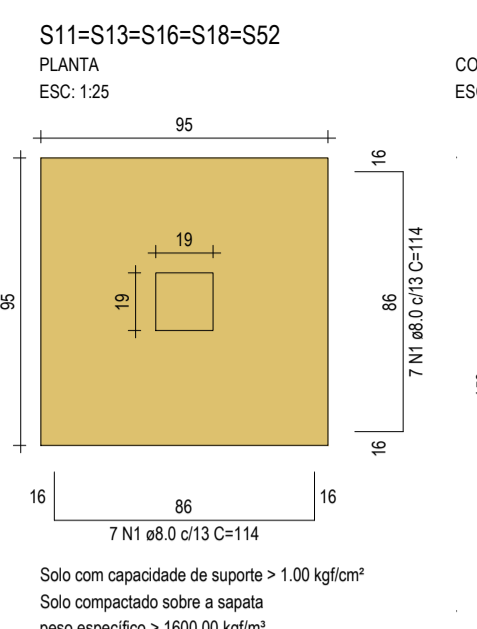
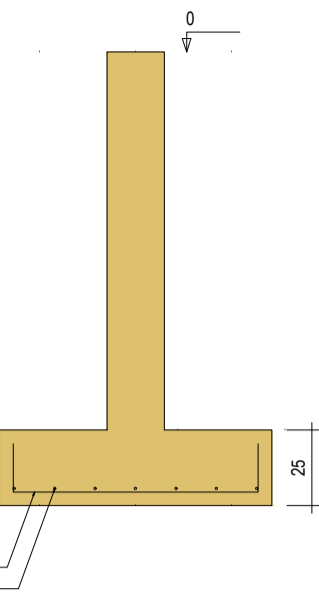
CORTE
ESC: 1:25



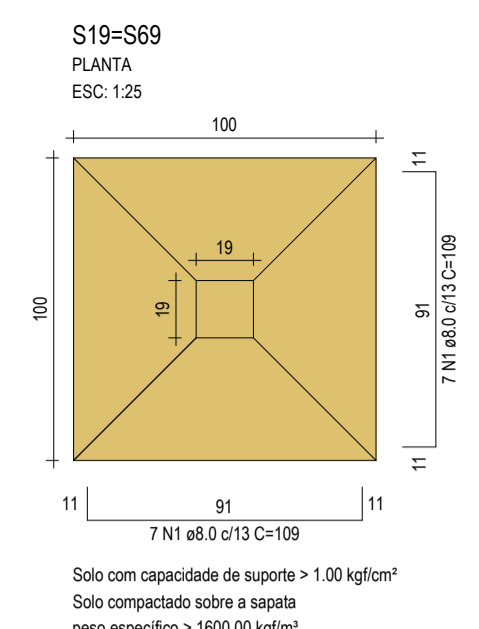
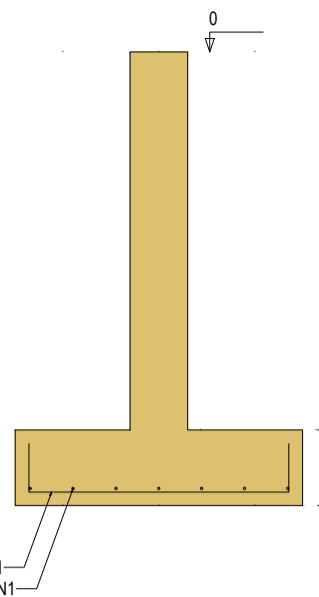
CORTE
ESC: 1:25



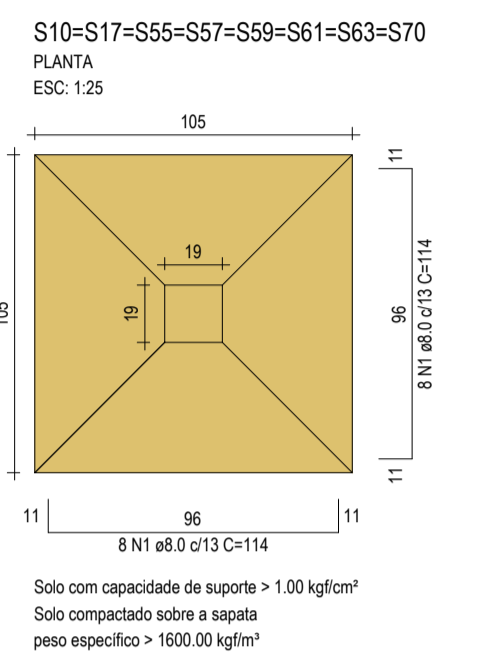
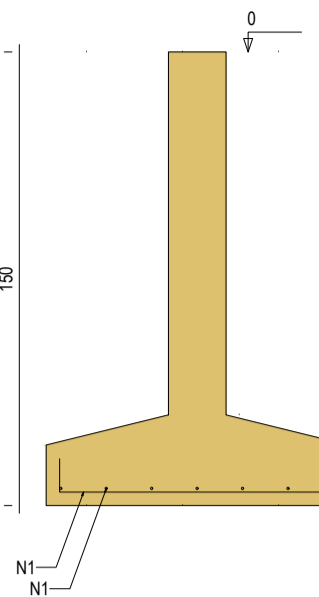
CORTE
ESC: 1:25



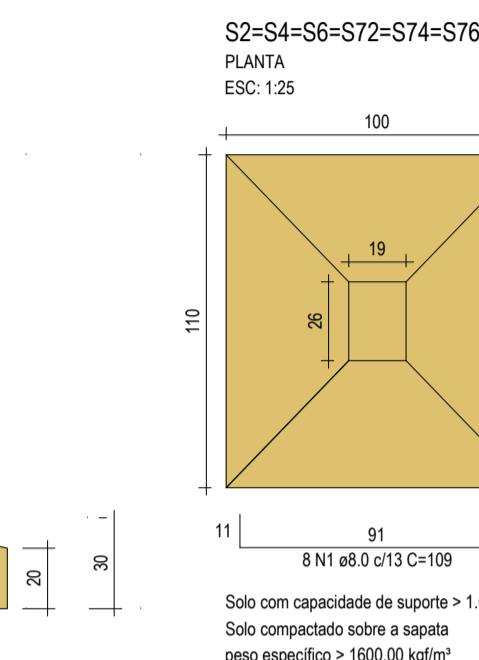
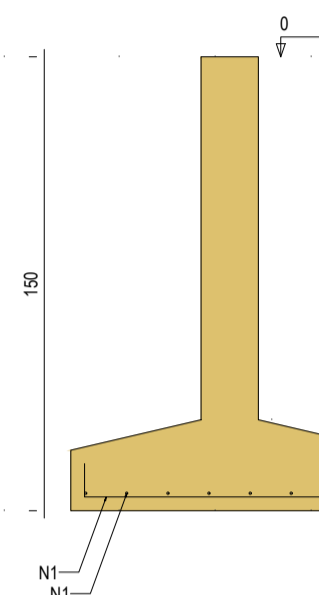
CORTE
ESC: 1:25



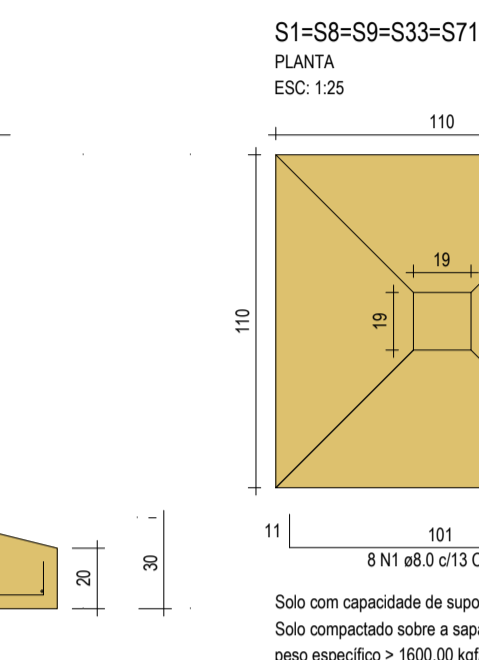
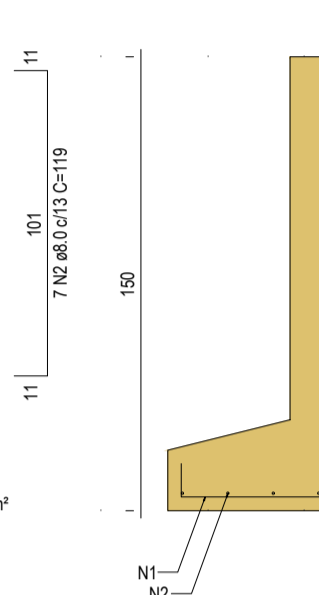
CORTE
ESC: 1:25



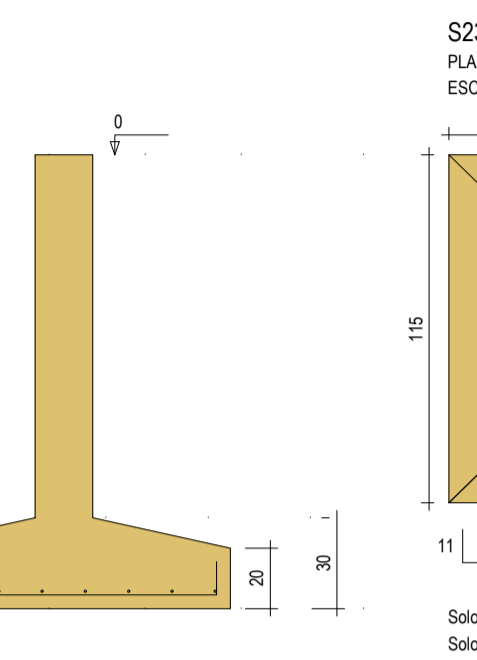
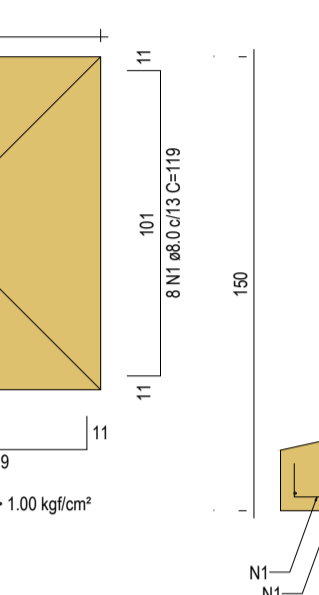
CORTE
ESC: 1:25



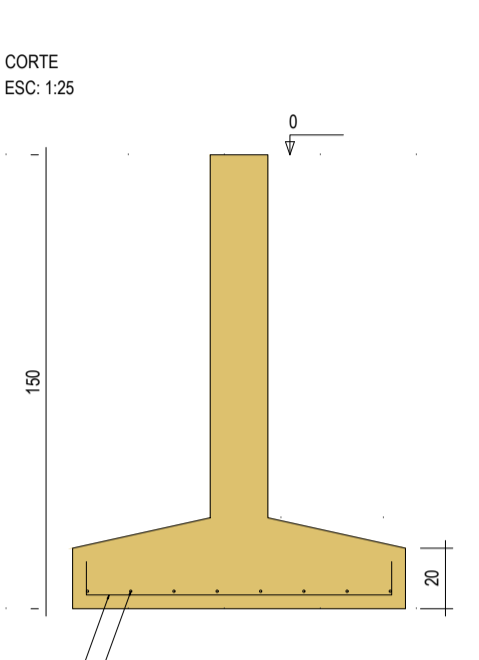
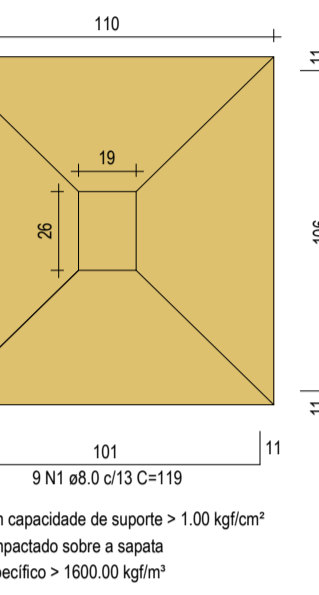
CORTE
ESC: 1:25



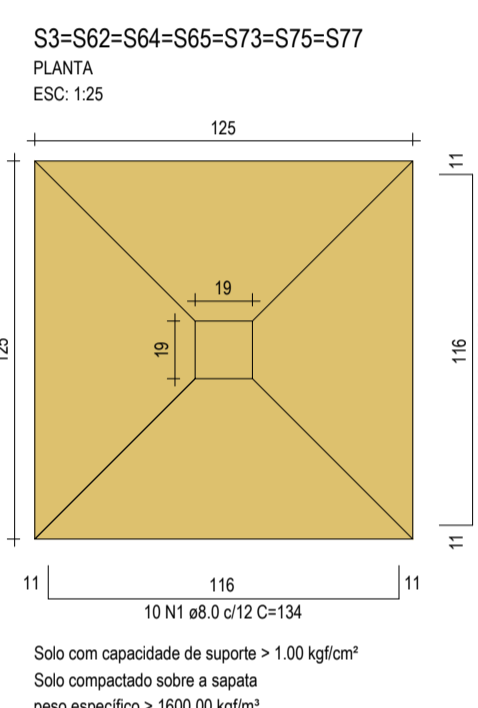
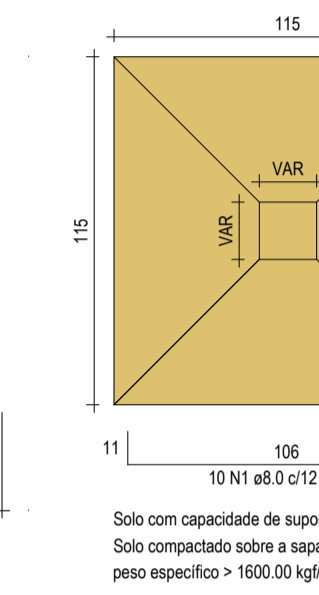
CORTE
ESC: 1:25



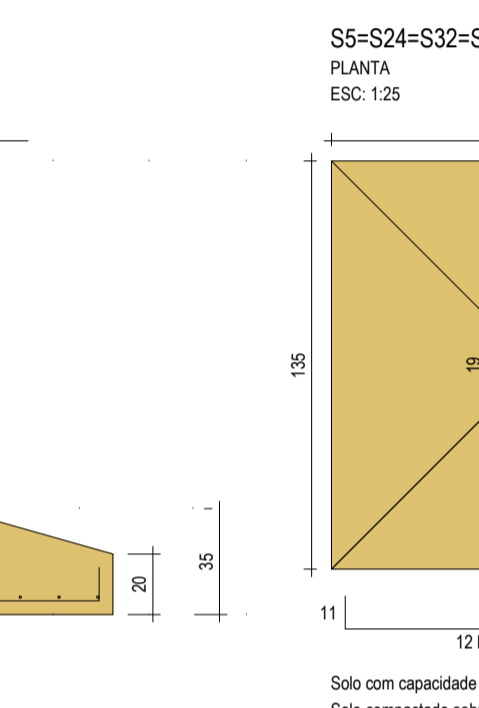
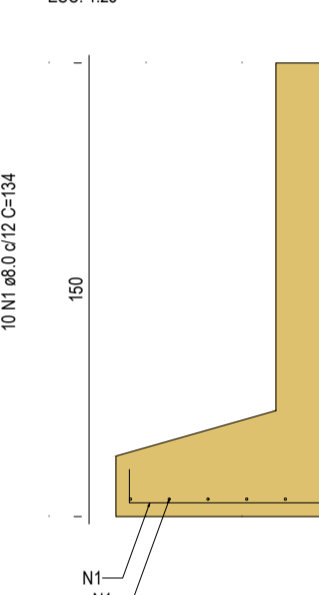
CORTE
ESC: 1:25



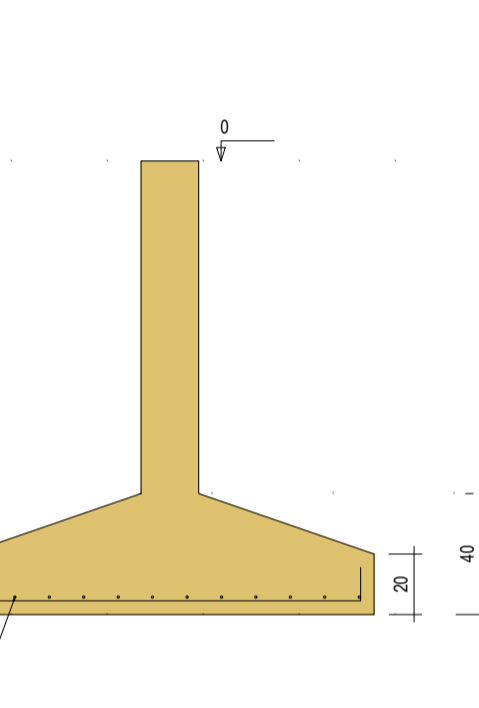
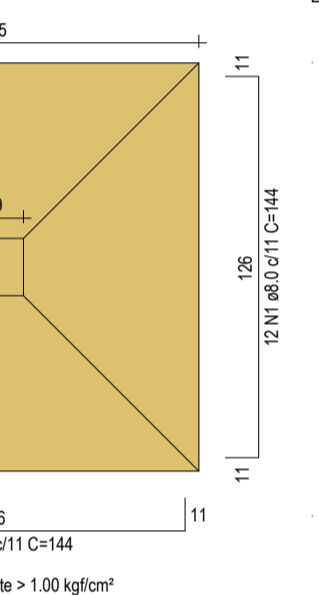
CORTE
ESC: 1:25



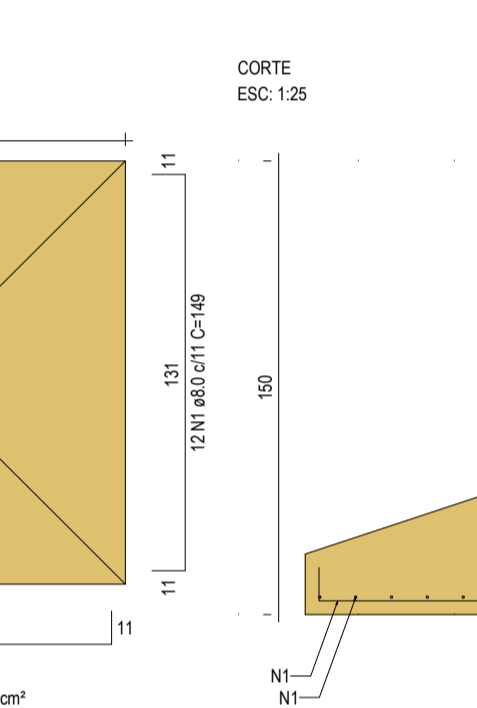
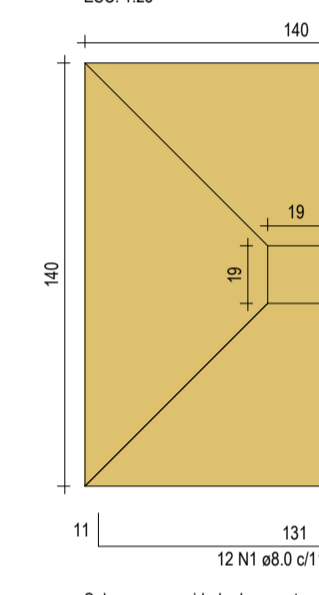
CORTE
ESC: 1:25



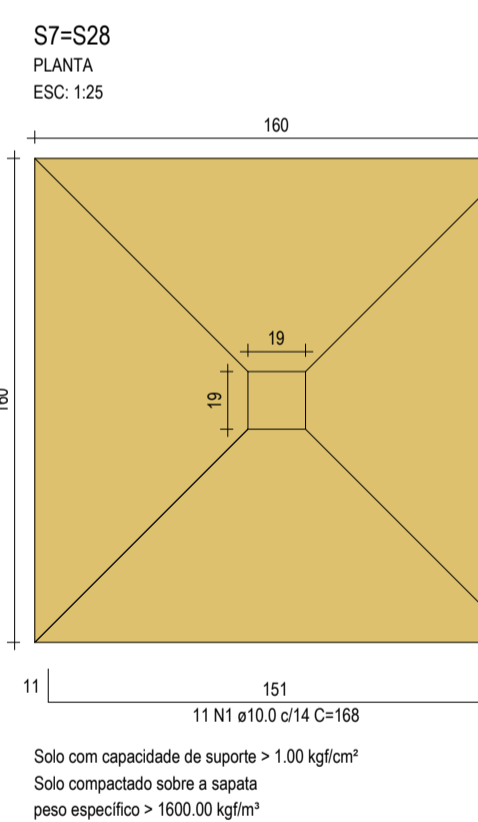
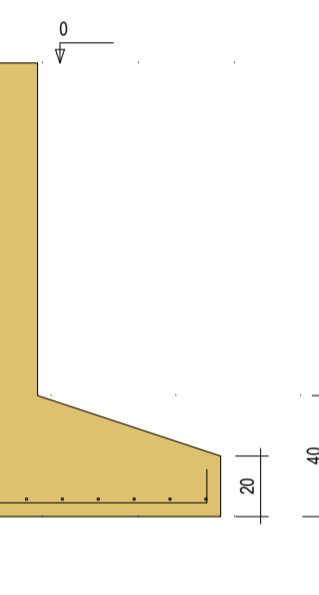
CORTE
ESC: 1:25



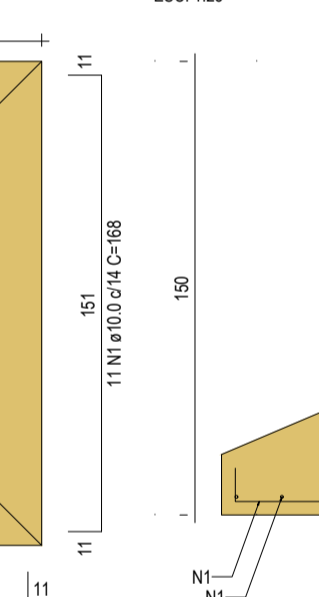
CORTE
ESC: 1:25



CORTE
ESC: 1:25



CORTE
ESC: 1:25



RELAÇÃO DO AÇO

ELEMENTO	AÇO	N	DIAM (mm)	QUANT	C.LIMIT (cm)	C.TOTAL (cm)
6xS1	CA50	1	8.0	96	119	11420
7xS3	CA50	1	8.0	140	134	18760
7xS8	CA50	1	8.0	56	109	6104
	CA50	2	8.0	49	119	5831
17xS12	CA50	1	8.0	204	99	20196
3xS15	CA50	1	8.0	90	109	14310
8xS17	CA50	1	8.0	128	114	14520
5xS18	CA50	1	8.0	70	114	7980
4xS20	CA50	1	8.0	56	149	14304
6xS22	CA50	1	8.0	114	124	14136
S23	CA50	1	8.0	9	119	1071
	CA50	2	8.0	8	124	992
6xS24	CA50	1	8.0	144	144	20736
2xS28	CA50	1	10.0	44	199	7892
3xS43	CA50	1	8.0	36	89	3204
2xS68	CA50	1	8.0	28	109	3052
2xS69	CA50	1	8.0	28	109	3052

RESUMO DO AÇO

AÇO	DIAM (mm)	C.TOTAL	PESO + 0%
CA50	8.0	1597.4	630.3
	10.0	73.9	45.6
PESO TOTAL (kg)			
CA50		675.9	

Volume de concreto (C-30) = 24.83 m³
Área de forma = 72.27 m²

ASSINATURAS E APROVAÇÃO

PROJETISTA: LEONARDO SILVEIRA LIMA, ENGENHEIRO CIVIL - RNP: 060181067

PROPRIETÁRIO: ALVARO PRADA

APROVAÇÃO: ALVARO PRADA

PROPRIETÁRIO: ALVARO PRADA

PROJETO: CONSTRUÇÃO DA ESCOLA CEI MANUEL ANTÔNIO PEREIRA

ESTRUTURAS DE CONCRETO

IDENTIFICAÇÃO DOS DESENHOS: SAPATAS

LOCAL: ARACATUPE, ESTADO DO RIO GRANDE DO NORTE, BRASIL

DATA: JUL/2022

PRANCHAS: 02/16

REVISÃO: ALANA PRADO

INDICADA: ALANA PRADO

CONTRÔLE: ALANA PRADO

GEO PAC

AV. PADRE ANTÔNIO TOMAZ N.º 205, SALA 011, BARRO ALBERTO, FORTALEZA, CEARÁ

TEL: (85) 3241-3171, FAX: (85) 3241-3171, E-MAIL: GEO.PAC@GEO.PAC.COM.BR