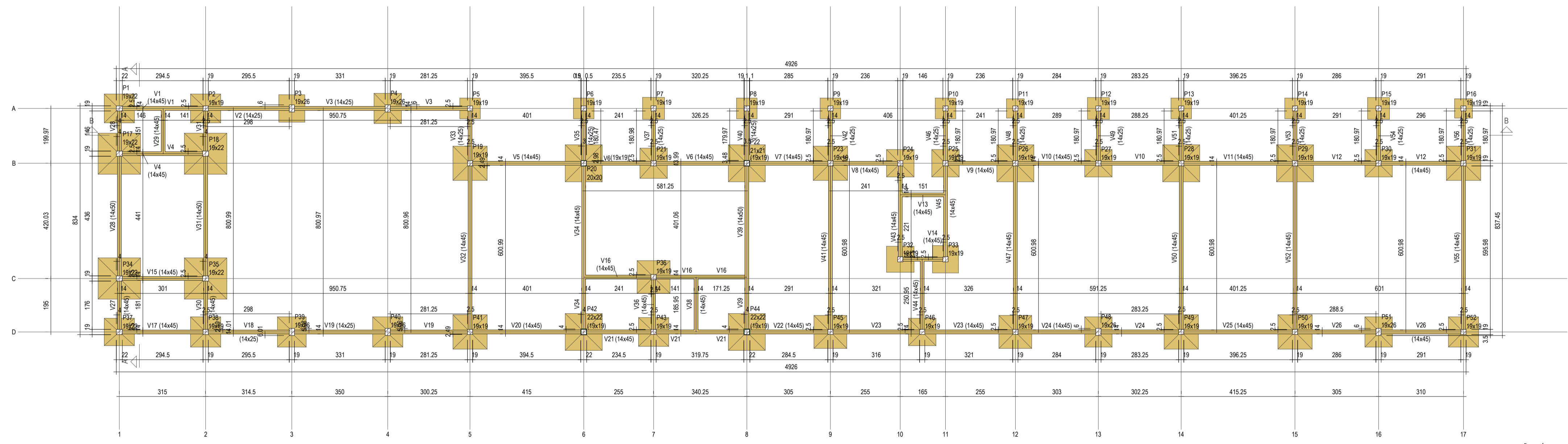


| RELAÇÃO DO AÇO |      |   |           |       |           |             |
|----------------|------|---|-----------|-------|-----------|-------------|
| ELEMENTO       | AÇO  | N | DIAM (mm) | QUANT | CUBIT (m) | C TOTAL (m) |
| V41            | CA80 | 1 | 5.0       | 26    | 101       | 2626        |
|                | CA50 | 2 | 3.0       | 2     | 390       | 560         |
|                | CA30 | 3 | 6.3       | 2     | 395       | 790         |
| V42            | CA50 | 3 | 6.3       | 2     | 414       | 1272        |
|                | CA30 | 5 | 8.0       | 1     | 184       | 154         |
|                | CA20 | 6 | 8.0       | 2     | 187       | 374         |
| V43            | CA50 | 7 | 6.3       | 2     | 242       | 464         |
|                | CA30 | 3 | 6.3       | 1     | 61        | 976         |
|                | CA20 | 4 | 6.3       | 2     | 242       | 464         |
| V44            | CA50 | 1 | 5.0       | 14    | 101       | 1414        |
|                | CA30 | 2 | 8.0       | 2     | 370       | 740         |
|                | CA20 | 3 | 6.3       | 2     | 414       | 828         |
| V45            | CA50 | 1 | 5.0       | 11    | 101       | 1111        |
|                | CA30 | 2 | 8.0       | 2     | 342       | 684         |
|                | CA20 | 3 | 6.3       | 2     | 326       | 652         |
| V46            | CA50 | 2 | 8.0       | 2     | 370       | 740         |
|                | CA30 | 3 | 6.3       | 2     | 414       | 828         |
|                | CA20 | 4 | 6.3       | 2     | 414       | 828         |
| V47            | CA50 | 5 | 8.0       | 2     | 242       | 464         |
|                | CA30 | 2 | 6.3       | 4     | 229       | 916         |
|                | CA20 | 2 | 5.0       | 2     | 101       | 202         |
| V48            | CA50 | 2 | 8.0       | 2     | 370       | 740         |
|                | CA30 | 3 | 6.3       | 2     | 414       | 828         |
|                | CA20 | 4 | 6.3       | 2     | 414       | 828         |
| V49            | CA50 | 1 | 5.0       | 16    | 61        | 976         |
|                | CA30 | 2 | 6.3       | 4     | 229       | 916         |
|                | CA20 | 2 | 5.0       | 2     | 101       | 202         |
| V50            | CA50 | 2 | 6.3       | 4     | 229       | 916         |
|                | CA30 | 3 | 6.3       | 2     | 414       | 828         |
|                | CA20 | 2 | 5.0       | 2     | 101       | 202         |
| V51            | CA50 | 5 | 8.0       | 2     | 242       | 464         |
|                | CA30 | 2 | 6.3       | 4     | 229       | 916         |
|                | CA20 | 2 | 5.0       | 2     | 101       | 202         |
| V52            | CA50 | 6 | 8.0       | 2     | 242       | 464         |
|                | CA30 | 3 | 6.3       | 2     | 414       | 828         |
|                | CA20 | 2 | 5.0       | 2     | 101       | 202         |
| V53            | CA50 | 8 | 8.0       | 2     | 244       | 488         |
|                | CA30 | 2 | 6.3       | 2     | 221       | 442         |
|                | CA20 | 2 | 5.0       | 2     | 101       | 202         |
| V54            | CA50 | 2 | 6.3       | 2     | 221       | 442         |
|                | CA30 | 3 | 6.3       | 2     | 414       | 828         |
|                | CA20 | 1 | 5.0       | 16    | 61        | 976         |
| V55            | CA50 | 1 | 5.0       | 26    | 101       | 1414        |
|                | CA30 | 4 | 6.3       | 2     | 414       | 828         |
|                | CA20 | 3 | 6.3       | 2     | 414       | 828         |
| V56            | CA50 | 4 | 6.3       | 2     | 414       | 828         |
|                | CA30 | 6 | 8.0       | 2     | 188       | 376         |
|                | CA20 | 8 | 8.0       | 2     | 205       | 410         |

| RESUMO DO AÇO   |           |             |                |
|-----------------|-----------|-------------|----------------|
| AÇO             | DIAM (mm) | C TOTAL (m) | PESO + 0% (kg) |
| CA50            | 6.3       | 160.3       | 39.2           |
| CA30            | 8.0       | 118.7       | 46.8           |
| CA20            | 10.0      | 9.3         | 5.7            |
| CA50            | 5.0       | 276.6       | 42.6           |
| PESO TOTAL (kg) |           |             | 94.3           |
| CA50            | 91.8      |             | 42.6           |
| CA20            | 2.5       |             | 0.0            |

Volume de concreto (C-30) = 3.25 m³  
Área de forma = 54.78 m²



| Vigas |            |               |            | Pilares |            |               |            |
|-------|------------|---------------|------------|---------|------------|---------------|------------|
| Nome  | Seção (cm) | Elevação (cm) | Nível (cm) | Nome    | Seção (cm) | Elevação (cm) | Nível (cm) |
| V1    | 14x45      | 0             | 45         | P1      | 19x22      | 0             | 45         |
| V2    | 14x25      | 0             | 45         | P2      | 19x19      | 0             | 45         |
| V3    | 14x25      | 0             | 45         | P3      | 19x26      | 0             | 45         |
| V4    | 14x45      | 0             | 45         | P4      | 19x26      | 0             | 45         |
| V5    | 14x45      | 0             | 45         | P5      | 19x19      | 0             | 45         |
| V6    | 14x45      | 0             | 45         | P6      | 19x19      | 0             | 45         |
| V7    | 14x45      | 0             | 45         | P7      | 19x19      | 0             | 45         |
| V8    | 14x45      | 0             | 45         | P8      | 19x19      | 0             | 45         |
| V9    | 14x45      | 0             | 45         | P9      | 19x19      | 0             | 45         |
| V10   | 14x45      | 0             | 45         | P10     | 19x19      | 0             | 45         |
| V11   | 14x45      | 0             | 45         | P11     | 19x19      | 0             | 45         |
| V12   | 14x45      | 0             | 45         | P12     | 19x19      | 0             | 45         |
| V13   | 14x45      | 0             | 45         | P13     | 19x19      | 0             | 45         |
| V14   | 14x45      | 0             | 45         | P14     | 19x19      | 0             | 45         |
| V15   | 14x45      | 0             | 45         | P15     | 19x19      | 0             | 45         |
| V16   | 14x45      | 0             | 45         | P16     | 19x19      | 0             | 45         |
| V17   | 14x45      | 0             | 45         | P17     | 19x22      | 0             | 45         |
| V18   | 14x25      | 0             | 45         | P18     | 19x22      | 0             | 45         |
| V19   | 14x25      | 0             | 45         | P19     | 19x19      | 0             | 45         |
| V20   | 14x45      | 0             | 45         | P20     | 20x20      | 0             | 45         |
| V21   | 14x45      | 0             | 45         | P21     | 19x19      | 0             | 45         |
| V22   | 14x45      | 0             | 45         | P22     | 21x21      | 0             | 45         |
| V23   | 14x45      | 0             | 45         | P23     | 19x19      | 0             | 45         |
| V24   | 14x45      | 0             | 45         | P24     | 19x19      | 0             | 45         |
| V25   | 14x45      | 0             | 45         | P25     | 19x19      | 0             | 45         |
| V26   | 14x45      | 0             | 45         | P26     | 19x19      | 0             | 45         |
| V27   | 14x45      | 0             | 45         | P27     | 19x19      | 0             | 45         |
| V28   | 14x45      | 0             | 45         | P28     | 19x19      | 0             | 45         |
| V29   | 14x45      | 0             | 45         | P29     | 19x19      | 0             | 45         |
| V30   | 14x45      | 0             | 45         | P30     | 19x19      | 0             | 45         |
| V31   | 14x50      | 0             | 45         | P31     | 19x19      | 0             | 45         |
| V32   | 14x45      | 0             | 45         | P32     | 19x19      | 0             | 45         |
| V33   | 14x25      | 0             | 45         | P33     | 19x19      | 0             | 45         |
| V34   | 14x45      | 0             | 45         | P34     | 19x22      | 0             | 45         |
| V35   | 14x25      | 0             | 45         | P35     | 19x22      | 0             | 45         |
| V36   | 14x45      | 0             | 45         | P36     | 19x19      | 0             | 45         |
| V37   | 14x25      | 0             | 45         | P37     | 19x22      | 0             | 45         |
| V38   | 14x45      | 0             | 45         | P38     | 19x19      | 0             | 45         |
| V39   | 14x50      | 0             | 45         | P39     | 19x26      | 0             | 45         |
| V40   | 14x25      | 0             | 45         | P40     | 19x26      | 0             | 45         |
| V41   | 14x45      | 0             | 45         | P41     | 19x19      | 0             | 45         |
| V42   | 14x25      | 0             | 45         | P42     | 22x22      | 0             | 45         |
| V43   | 14x45      | 0             | 45         | P43     | 19x19      | 0             | 45         |
| V44   | 14x45      | 0             | 45         | P44     | 22x22      | 0             | 45         |
| V45   | 14x45      | 0             | 45         | P45     | 19x19      | 0             | 45         |
| V46   | 14x25      | 0             | 45         | P46     | 19x19      | 0             | 45         |
| V47   | 14x45      | 0             | 45         | P47     | 19x19      | 0             | 45         |
| V48   | 14x25      | 0             | 45         | P48     | 19x26      | 0             | 45         |
| V49   | 14x25      | 0             | 45         | P49     | 19x19      | 0             | 45         |
| V50   | 14x45      | 0             | 45         | P50     | 19x19      | 0             | 45         |
| V51   | 14x25      | 0             | 45         | P51     | 19x26      | 0             | 45         |
| V52   | 14x45      | 0             | 45         | P52     | 19x19      | 0             | 45         |
| V53   | 14x25      | 0             | 45         |         |            |               |            |
| V54   | 14x25      | 0             | 45         |         |            |               |            |
| V55   | 14x45      | 0             | 45         |         |            |               |            |
| V56   | 14x25      | 0             | 45         |         |            |               |            |

| Características dos materiais |               |  |
|-------------------------------|---------------|--|
| f <sub>ck</sub> (kgf/cm²)     | Ecs (kgf/cm²) |  |
| 300                           | 26834         |  |

**Legenda dos pilares**

- Pilar que passa
- Pilar com mudança de seção

**Legenda das vigas e paredes**

- Viga

**ASSINATURAS E APROVAÇÃO**

PROJETISTA: *Leonardo Silveira Lima*  
 PROPRIETÁRIO: LEONARDO SILVEIRA LIMA  
 ENGENHEIRO CIVIL - RNP: 060181067

APROVAÇÃO: \_\_\_\_\_

**GEO PAC** Av. Padre Antônio Tomás, N.º 205, SAI-01, BARRIO ALBERTO, FORTALEZA, FONE: 85 3241-3711/3712/3713/3714/3715/3716/3717/3718/3719/3720/3721/3722/3723/3724/3725/3726/3727/3728/3729/3730/3731/3732/3733/3734/3735/3736/3737/3738/3739/3740/3741/3742/3743/3744/3745/3746/3747/3748/3749/3750/3751/3752/3753/3754/3755/3756/3757/3758/3759/3760/3761/3762/3763/3764/3765/3766/3767/3768/3769/3770/3771/3772/3773/3774/3775/3776/3777/3778/3779/3780/3781/3782/3783/3784/3785/3786/3787/3788/3789/3790/3791/3792/3793/3794/3795/3796/3797/3798/3799/3800/3801/3802/3803/3804/3805/3806/3807/3808/3809/3810/3811/3812/3813/3814/3815/3816/3817/3818/3819/3820/3821/3822/3823/3824/3825/3826/3827/3828/3829/3830/3831/3832/3833/3834/3835/3836/3837/3838/3839/3840/3841/3842/3843/3844/3845/3846/3847/3848/3849/3850/3851/3852/3853/3854/3855/3856/3857/3858/3859/3860/3861/3862/3863/3864/3865/3866/3867/3868/3869/3870/3871/3872/3873/3874/3875/3876/3877/3878/3879/3880/3881/3882/3883/3884/3885/3886/3887/3888/3889/3890/3891/3892/3893/3894/3895/3896/3897/3898/3899/3900/3901/3902/3903/3904/3905/3906/3907/3908/3909/3910/3911/3912/3913/3914/3915/3916/3917/3918/3919/3920/3921/3922/3923/3924/3925/3926/3927/3928/3929/3930/3931/3932/3933/3934/3935/3936/3937/3938/3939/3940/3941/3942/3943/3944/3945/3946/3947/3948/3949/3950/3951/3952/3953/3954/3955/3956/3957/3958/3959/3960/3961/3962/3963/3964/3965/3966/3967/3968/3969/3970/3971/3972/3973/3974/3975/3976/3977/3978/3979/3980/3981/3982/3983/3984/3985/3986/3987/3988/3989/3990/3991/3992/3993/3994/3995/3996/3997/3998/3999/4000

PROPOSTA: PREFEITURA MUNICIPAL DE ARACATI  
 PROJETO: CONSTRUÇÃO DA EEF. VIRGINIA UCHOA  
 IDENTIFICAÇÃO DOS DESENHOS: VIGAS FUNDAÇÃO 02  
 FORMA FUNDAÇÃO

LOCAL: ARACATI/CE  
 DATA: JUL/2022  
 PRORCHA: 03/11

REVISÃO: ALANA PRADO  
 INDICADA  
 CONTROLADO: ARCT 022.24