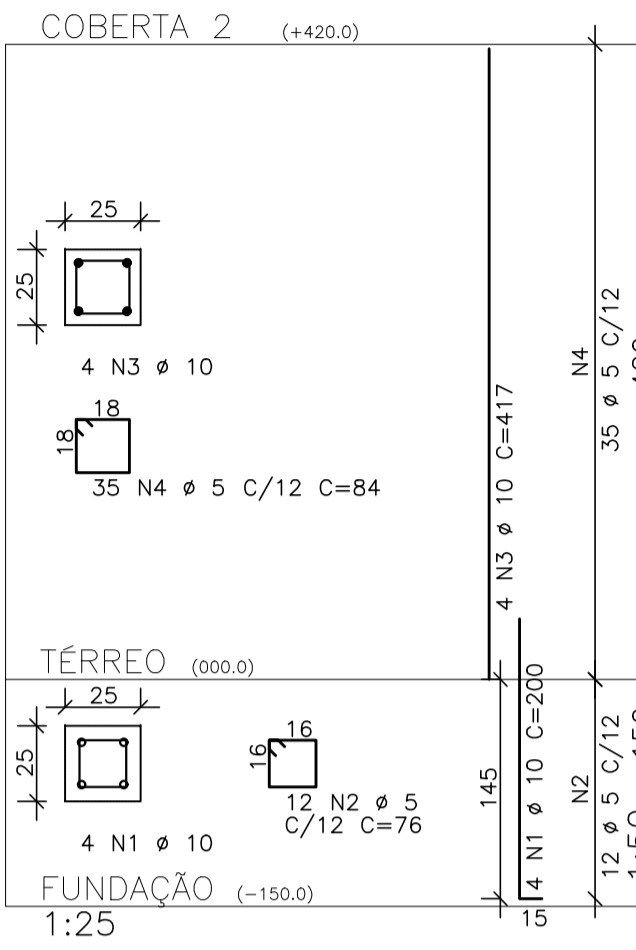
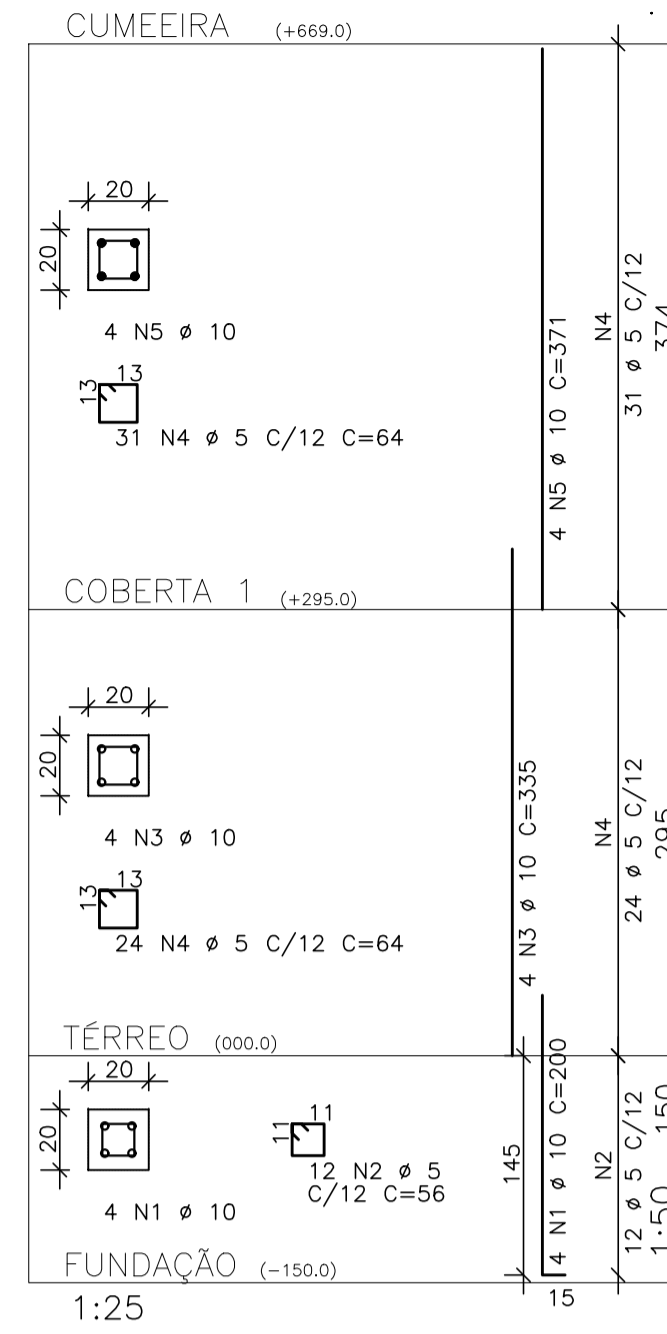


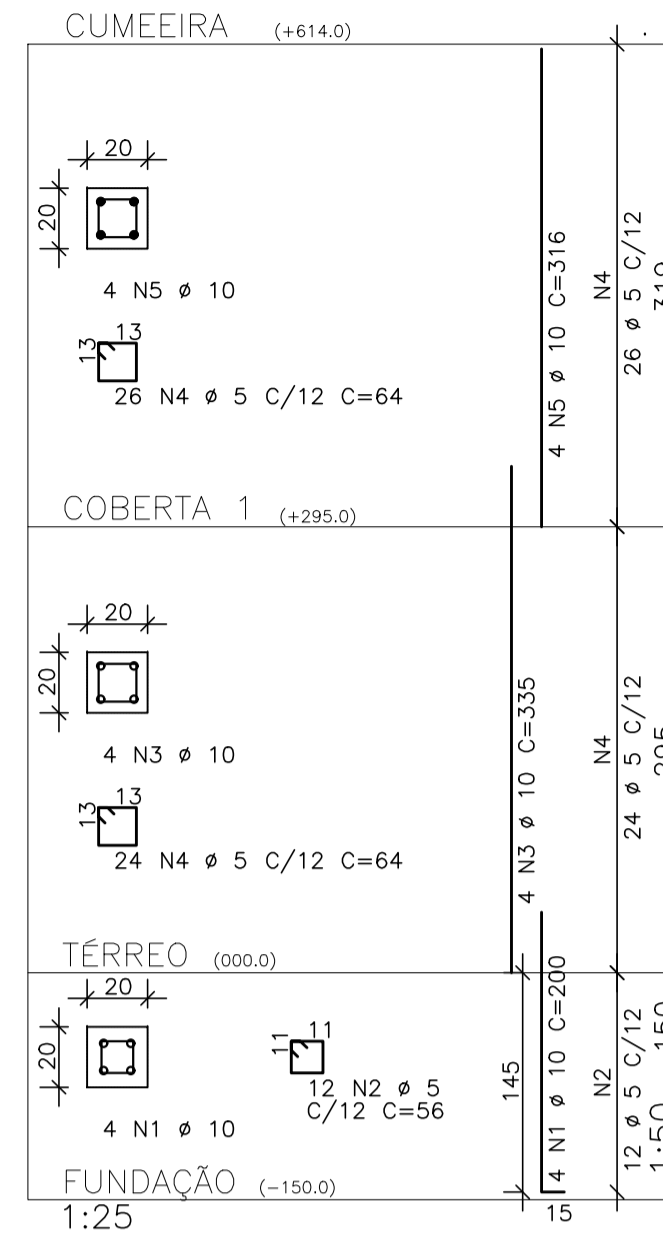
P29=P30=P43=P46=P47



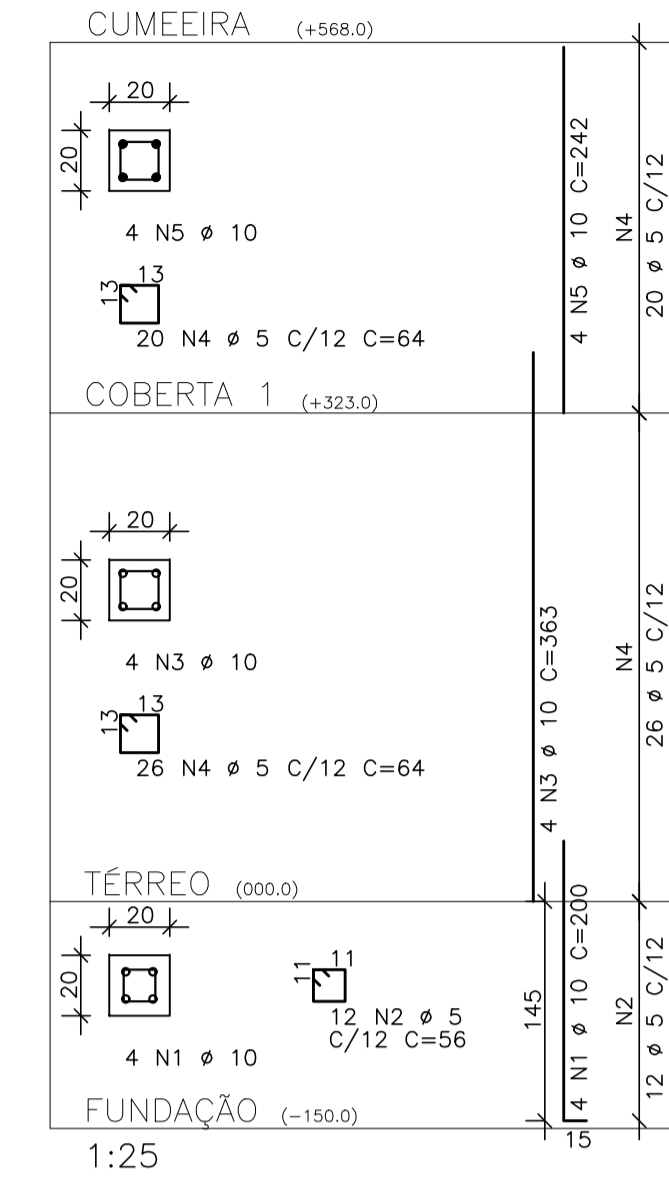
P31=P34



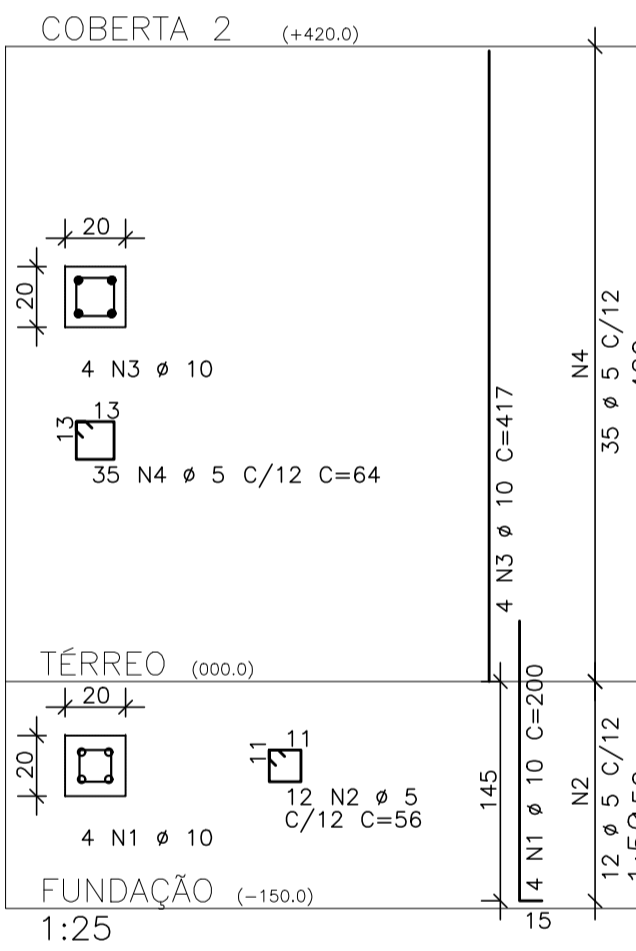
P35=P36



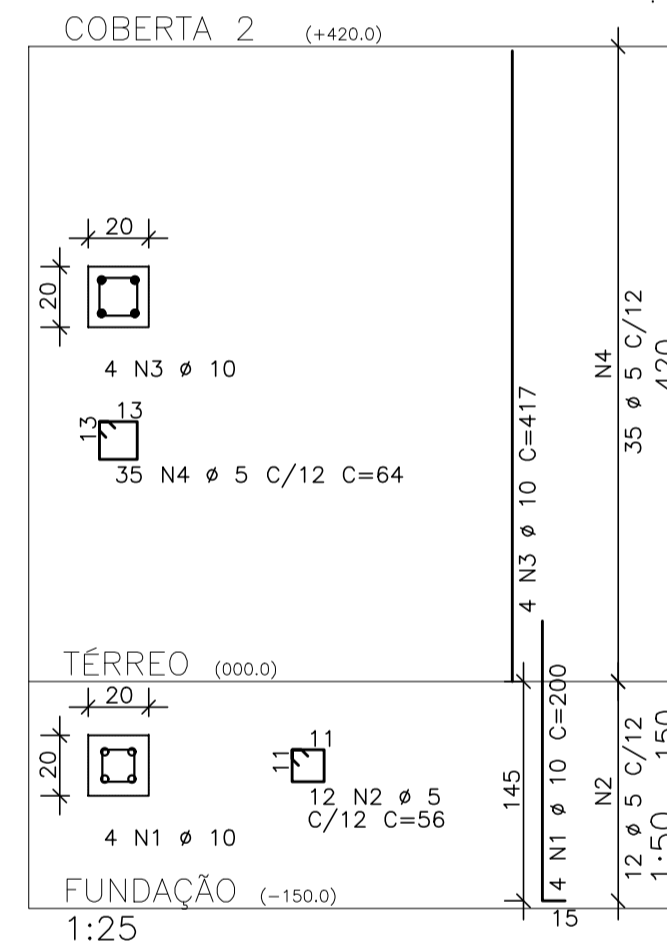
P37



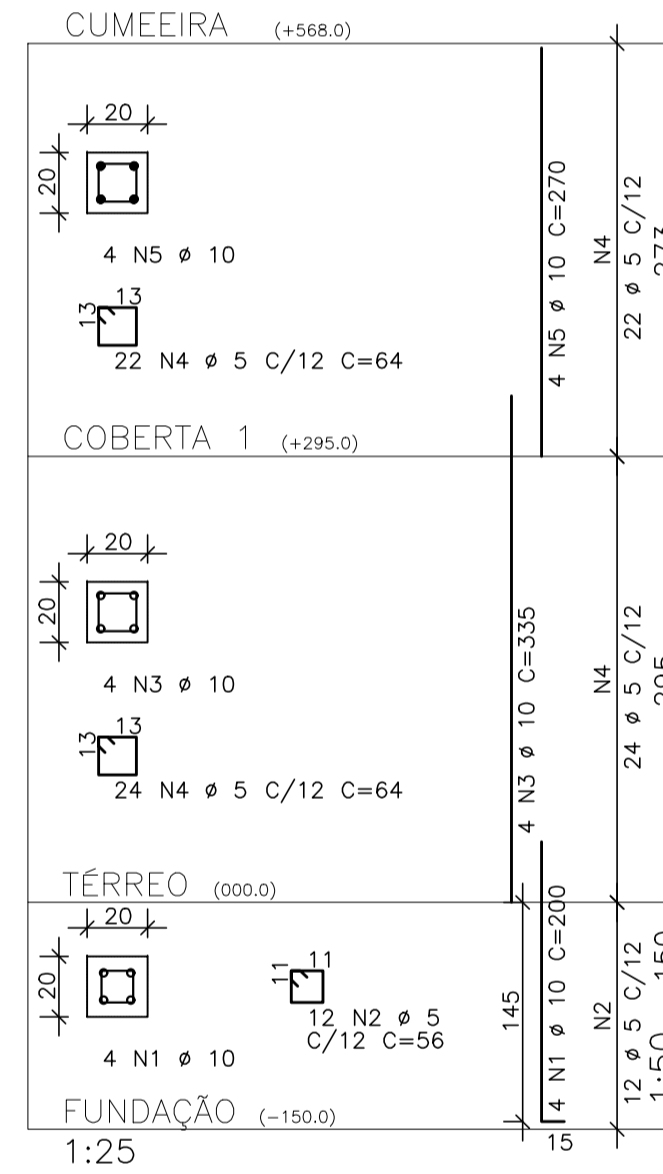
P42



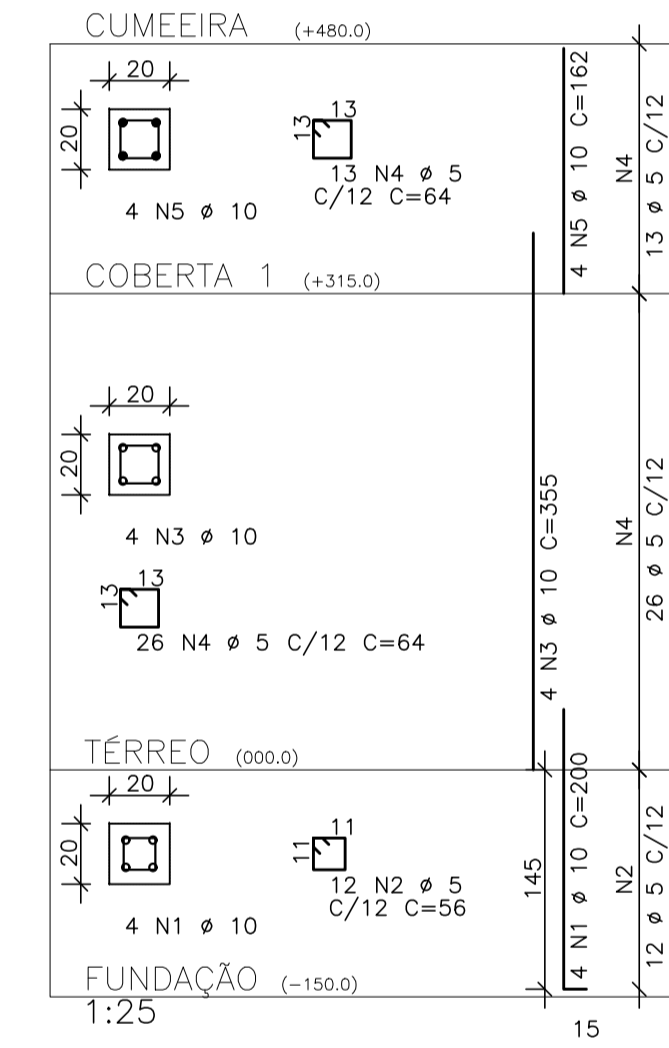
P44=P45



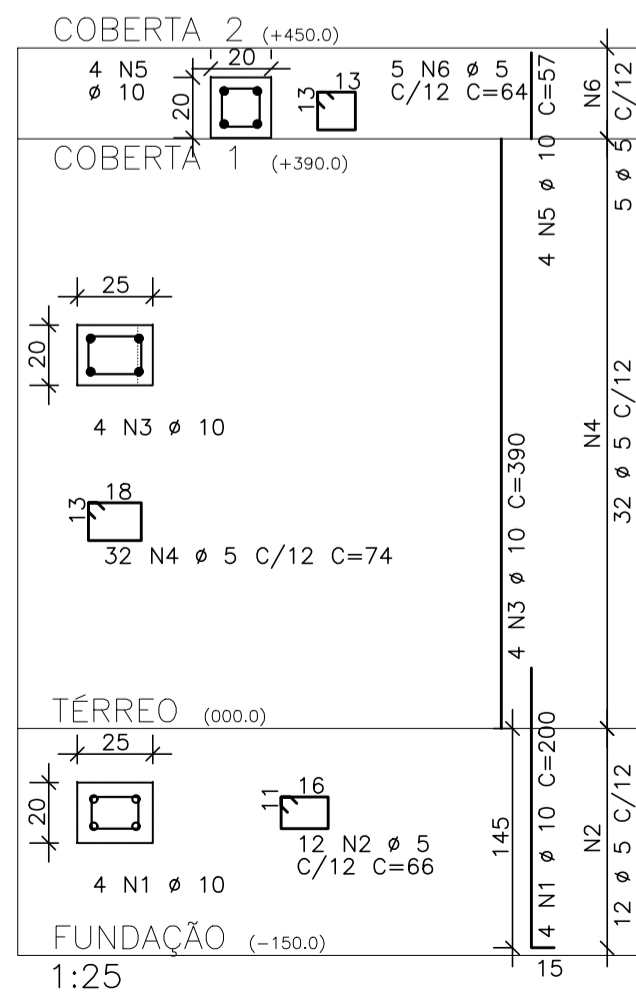
P49



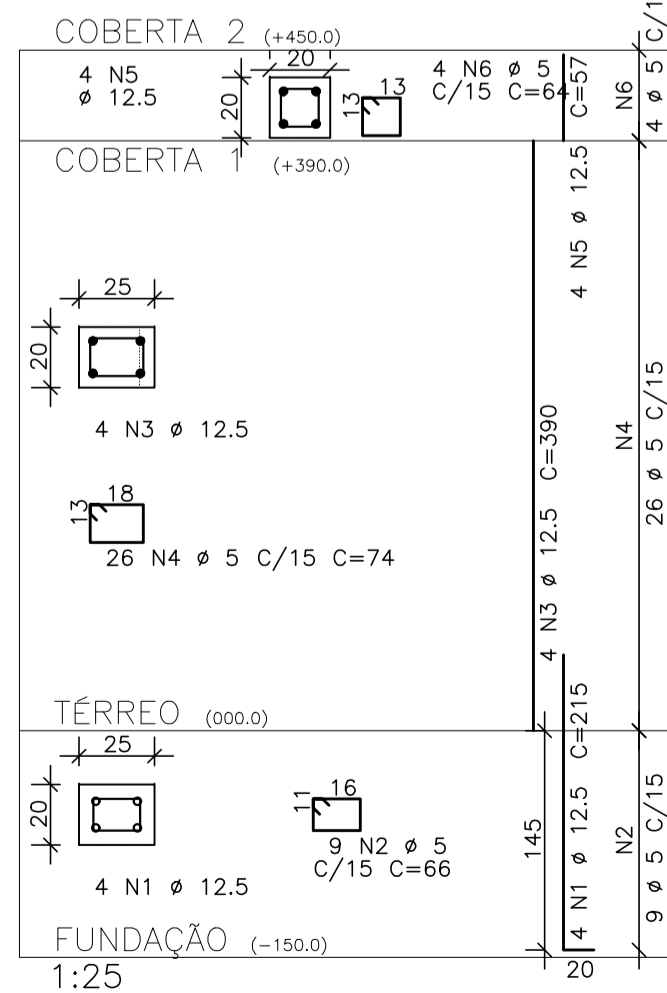
P50



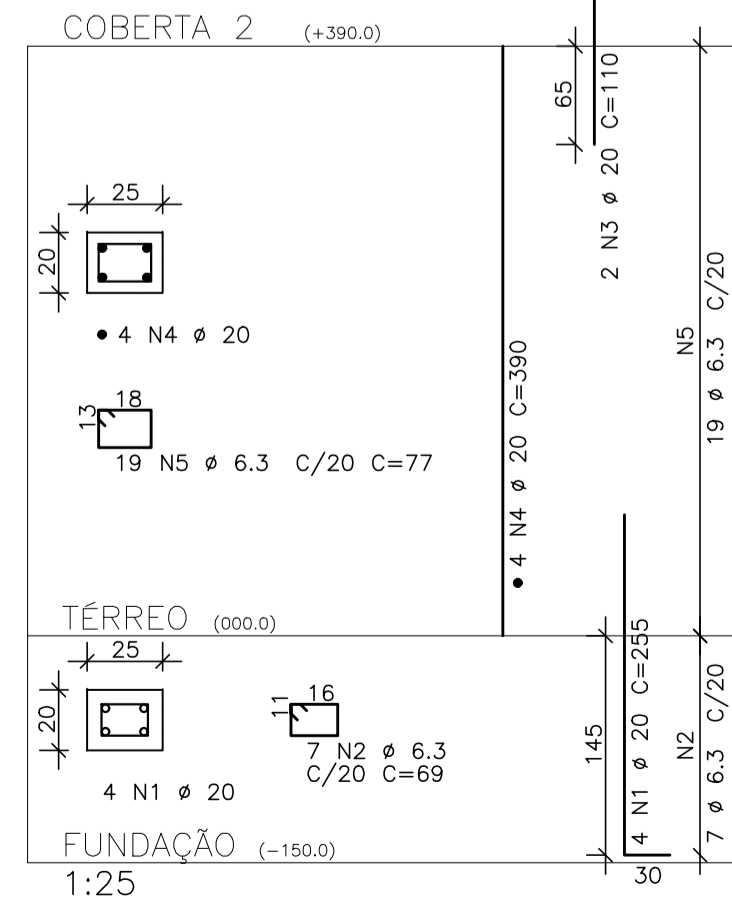
P51=P52=P53=P58=P59



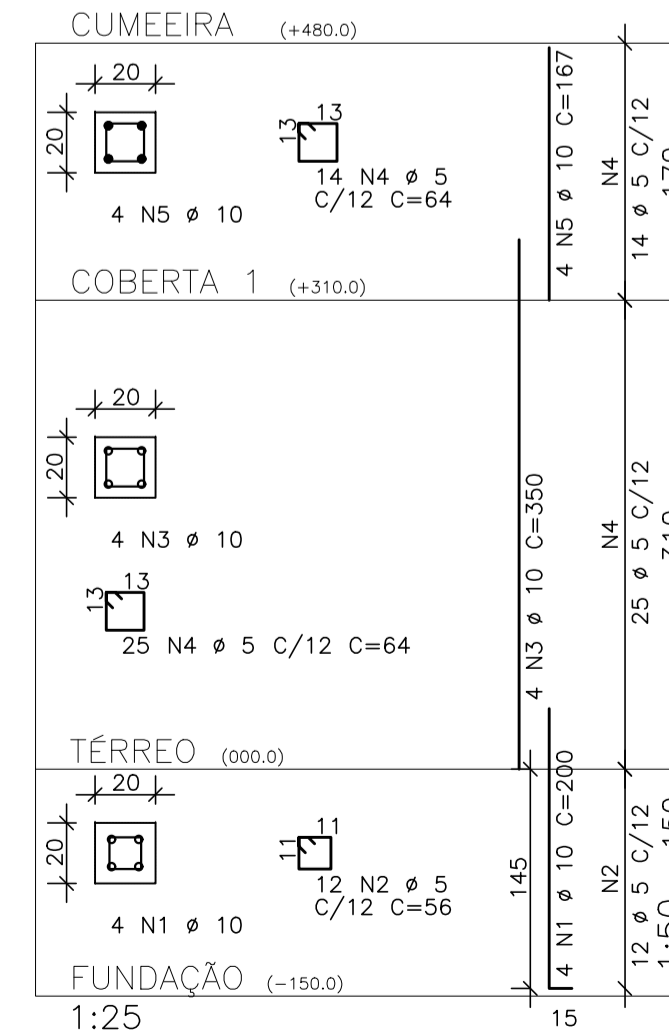
P54=P57=P60



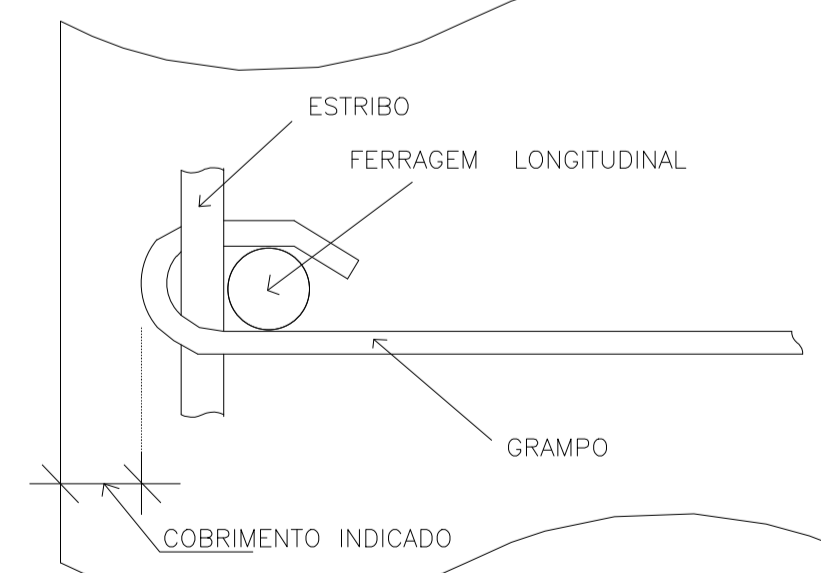
P55=P56



P61



DETALHE P/ FIXAÇÃO DE GRAMPOS
VISTA EM PLANTA



DIÂMETROS DE CURVATURA

φ	8	10	12*	16	20	22*	25
db (mm)	4	5	6,5	8	16	18	20

AÇO	POS	BIT (mm)	QUANT	COMPRIMENTO	
				UNIT (cm)	TOTAL (cm)
P29=P30=P43=P46=P47 (X5)					
50	1	10	20	200	4000
60	2	5	60	76	4560
50	3	10	20	417	8340
60	4	5	175	64	14700
P31=P34 (X2)					
50	1	10	8	200	1600
60	2	5	24	56	1344
50	3	10	8	335	2680
60	4	5	110	64	7040
50	5	10	8	371	2968
P35=P36 (X2)					
50	1	10	8	200	1600
60	2	5	24	56	1344
50	3	10	8	335	2680
60	4	5	100	64	6400
50	5	10	8	316	2528
P37					
50	1	10	4	200	800
60	2	5	12	56	672
50	3	10	4	363	1452
60	4	5	46	64	2944
50	5	10	4	242	968
P42					
50	1	10	4	200	800
60	2	5	12	56	672
50	3	10	4	417	1668
60	4	5	35	64	2240
P44=P45 (X2)					
50	1	10	8	200	1600
60	2	5	24	56	1344
50	3	10	8	417	3336
60	4	5	70	64	4480
P49					
50	1	10	4	200	800
60	2	5	12	56	672
50	3	10	4	335	1340
60	4	5	46	64	2944
50	5	10	4	270	1080
P50					
50	1	10	4	200	800
60	2	5	12	56	672
50	3	10	4	355	1420
60	4	5	39	64	2496
50	5	10	4	162	648
P51=P52=P53=P58=P59 (X5)					
50	1	10	20	200	4000
60	2	5	60	66	3960
50	3	10	20	390	7800
60	4	5	160	74	11840
50	5	10	20	57	1140
60	6	5	25	64	1600
P54=P57=P60 (X3)					
50	1	12,5	12	215	2580
60	2	5	27	66	1782
50	3	12,5	12	390	4680
60	4	5	78	74	5772
50	5	12,5	12	57	684
60	6	5	12	64	768
P55=P56 (X2)					
50	1	20	8	255	2040
50	2	6,3	14	69	966
60	3	20	4	110	440
50	4	20	8	390	3120
50	5	6,3	38	77	2926
P61					
50	1	10	4	200	800
60	2	5	12	56	672
50	3	10	4	350	1400
60	4	5	39	64	2496
50	5	10	4	167	668

RESUMO AÇO CA 50-60				
AÇO	BIT (mm)	COMPR (m)	PESO (kg)	
60	5	834	133	10
50	6,3	39	371	79
50	10	589	79	140
50	12,5	79	57	140
50	20	56	133	60
Peso Total			60 =	133 kg
Peso Total			50 =	600 kg

REV	DATA	DESCRIÇÃO
00	24/05/2019	MONTAGEM INICIAL

ASSINATURAS E APROVAÇÃO

PROJETISTA: *Leonardo Silveira Lima*
 PROPRIETÁRIO: *Leonardo Silveira Lima*
 ENGENHEIRO CIVIL - RNP: 002191106-7

APROVAÇÃO

GEOPAC
 AV. PADRE ANTONIO TOMAZ, N.º 2400, SALA 001
 BARRIO ASSISVAL, FORTALEZA
 FONE: 85 3041 31 41 | EMAIL: GEOPAC@GEOPAC.COM.BR

PROPRIETÁRIO: **PREFEITURA MUNICIPAL DE ARACATI**
 END: **CENTRO DE ARTESANATO E GASTRONOMIA DO ARACATI**
 PROJETO: **PROJETO ESTRUTURAL - CONCRETO ARMADO**

IDENTIFICAÇÃO DOS DESENHOS:
 01 ARMADURA DOS PILARES
 02
 03
 04
 05

TÍTULO: BR 304 / CE 311 - ARACATI
 DATA: MAIO/2019
 PRONCHA: 04/24

ESCALA: 1:25 - 1:50