

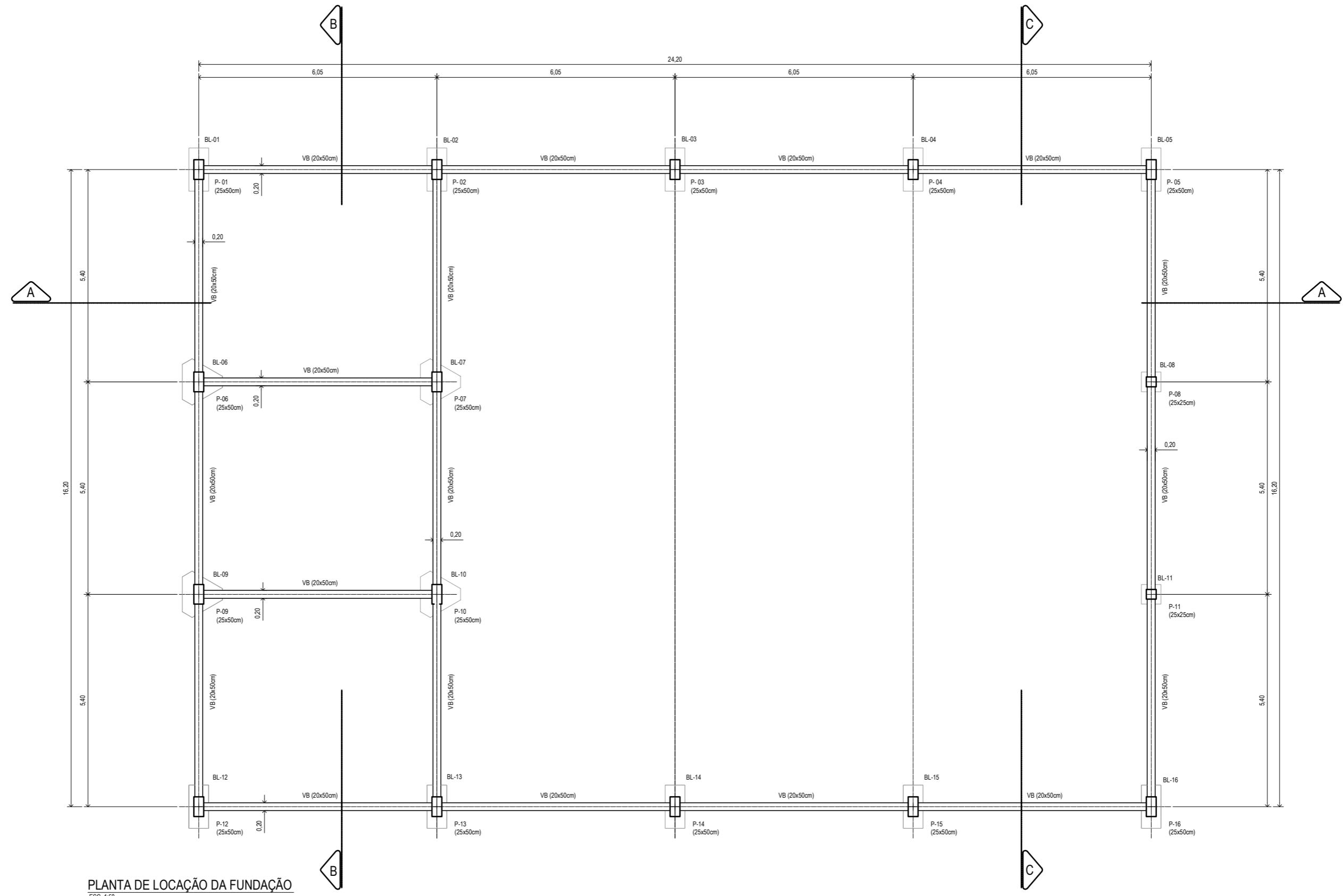




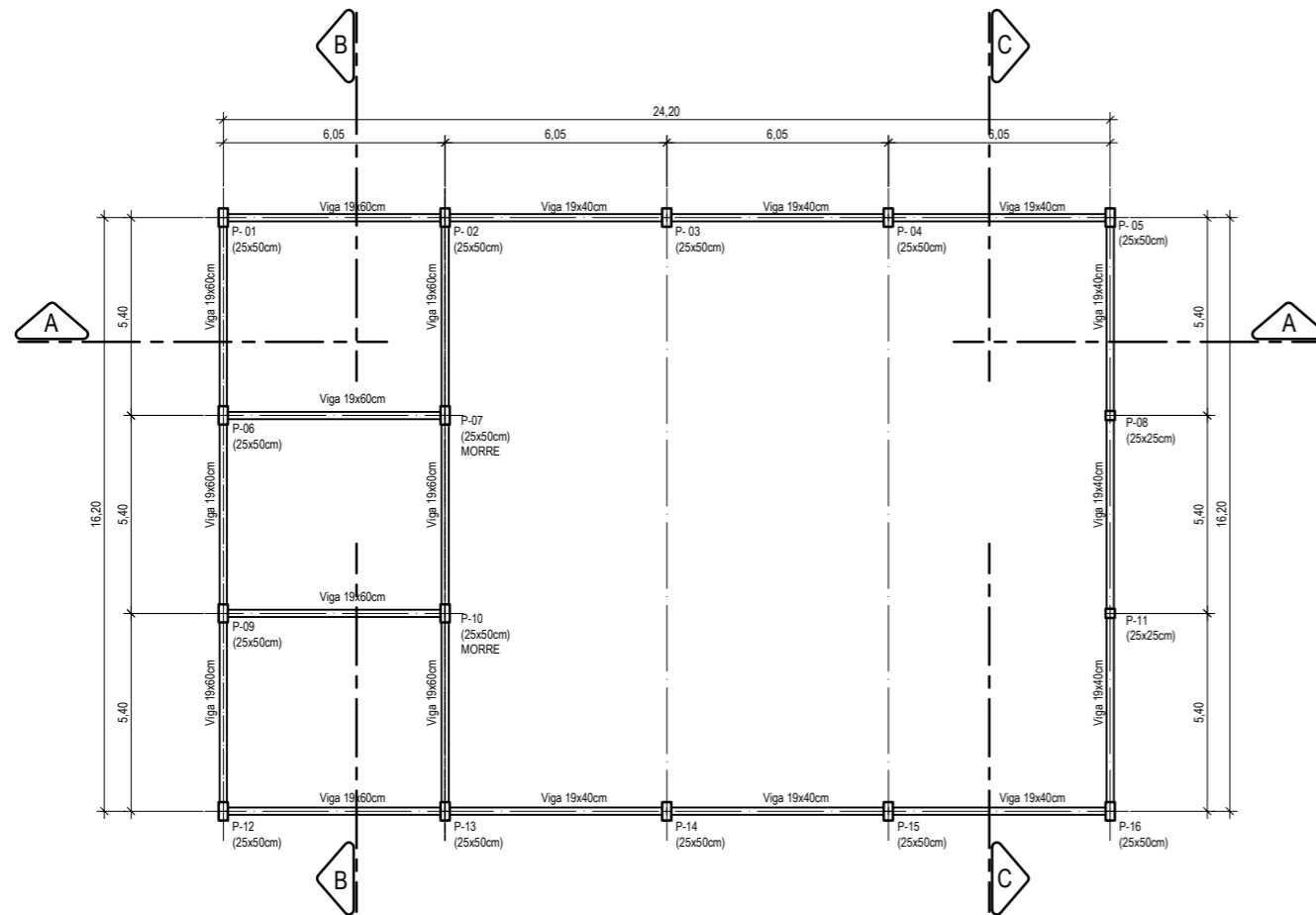
PLANTA DE LOCAÇÃO DOS BLOCOS DE FUNDAÇÃO
 ESC. 1:50

 Gestão de Resíduos		 GOVERNO DO ESTADO DO CEARÁ	
SEMA - SECRETARIA DE MEIO AMBIENTE PLANO DE COLETAS SELETIVAS MÚLTIPLAS GALPÃO DE TRIAGEM INDUSTRIAL PROJETO DE REFERÊNCIA - GALPÃO DE TRIAGEM DE 6.3 ton/dia - Fundações e Estrutura LOCAÇÃO DOS BLOCOS DE FUNDAÇÃO			
PROJETO	VISTO	DESENHO	ESCALA
I&T	I&T	RPastorelli	INDICADA
			DATA
			OUT/2019

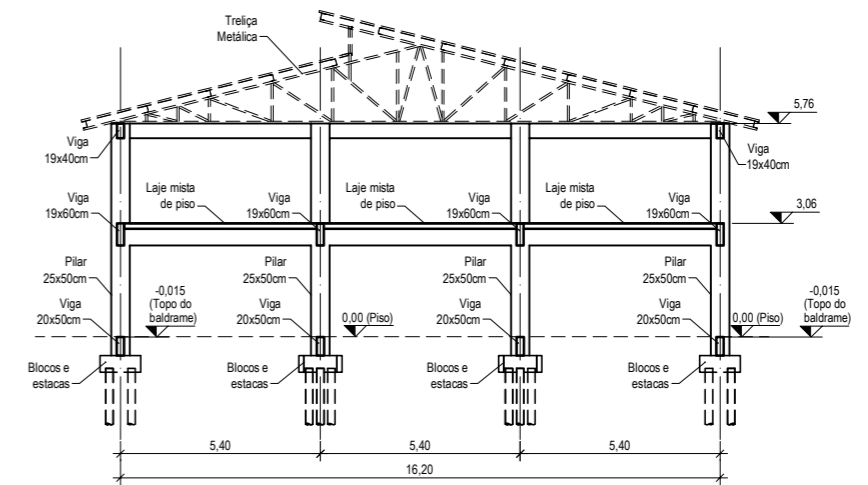


PLANTA DE LOCAÇÃO DA FUNDAÇÃO
ESC. 1:50

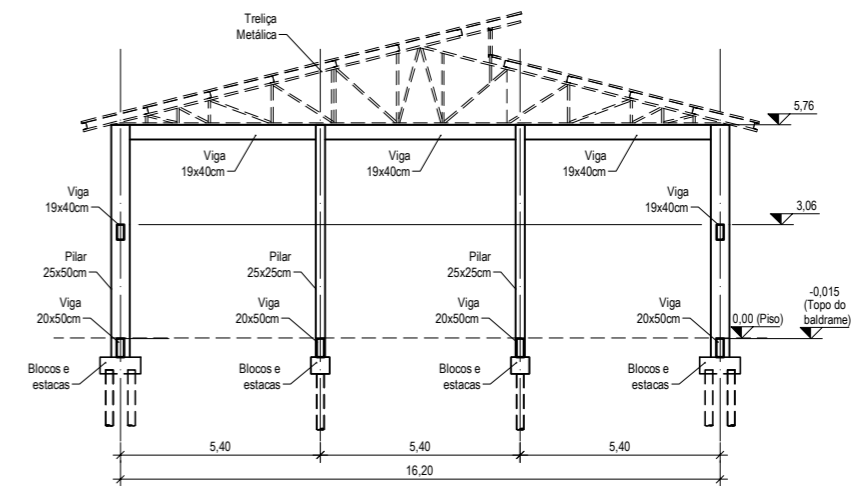
									
SEMA - SECRETARIA DE MEIO AMBIENTE PLANO DE COLETAS SELETIVAS MÚLTIPLAS GALPÃO DE TRIAGEM INDUSTRIAL PROJETO DE REFERÊNCIA - GALPÃO DE TRIAGEM DE 6.3 ton/dia - Fundações e Estrutura LOCAÇÃO DAS VIGAS BALDRAME				02 0					
PROJETO	I&T	VISTO	I&T	DESENHO	RPastorelli	ESCALA	INDICADA	DATA	OUT/2019



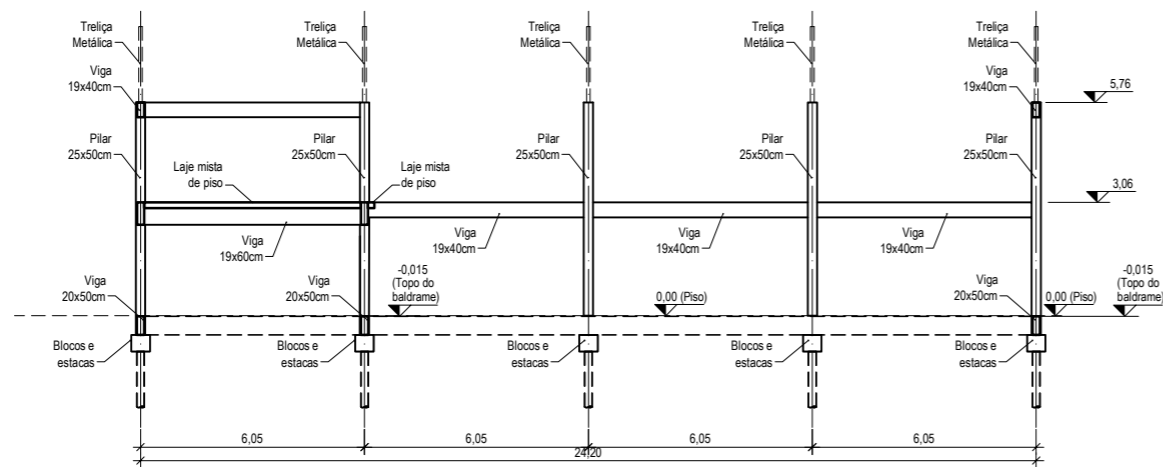
PLANTA DE LOCAÇÃO DAS VIGAS E PILARES
ESC. 1:100



CORTE BB
ESC. 1:100



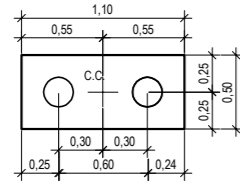
CORTE CC
ESC. 1:100



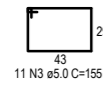
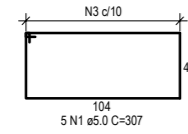
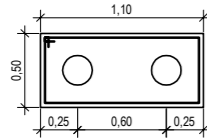
CORTE AA
ESC. 1:100

PLANTA

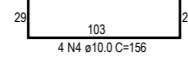
ESC. 1:25
(BLOCO 2 ESTACAS DE Ø20cm)



BL-01 / BL-02 / BL-03 / BL-04 /
BL-05 / BL-12 / BL-13 / BL-14 /
BL-15 / BL-16

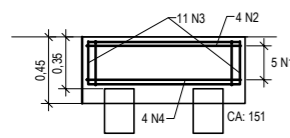


4 N2 ø5,0 C=103



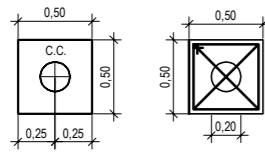
CORTE

ESC. 1:25



PLANTA

ESC. 1:25
(BLOCO 1 ESTACAS DE Ø20cm)



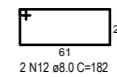
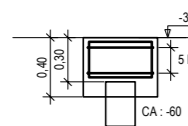
BL-08 / BL-11



5 N11 ø5,0 C=187

CORTE

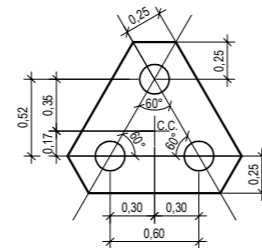
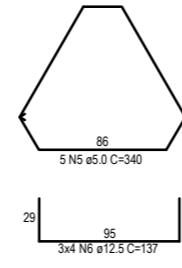
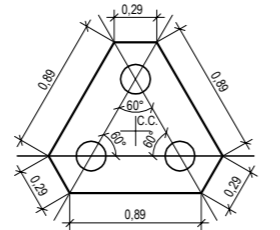
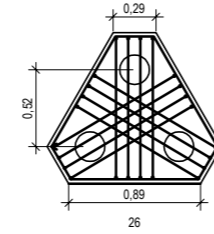
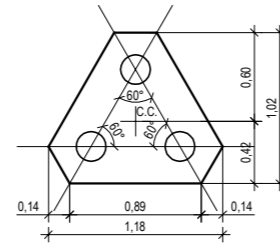
ESC. 1:25



2 N12 ø8,0 C=182

PLANTA

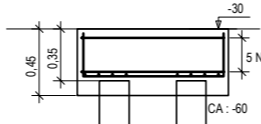
ESC. 1:25
(BLOCO 3 ESTACAS DE Ø20cm)



BL-06 / BL-07 / BL-09 / BL-10

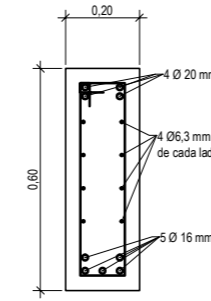
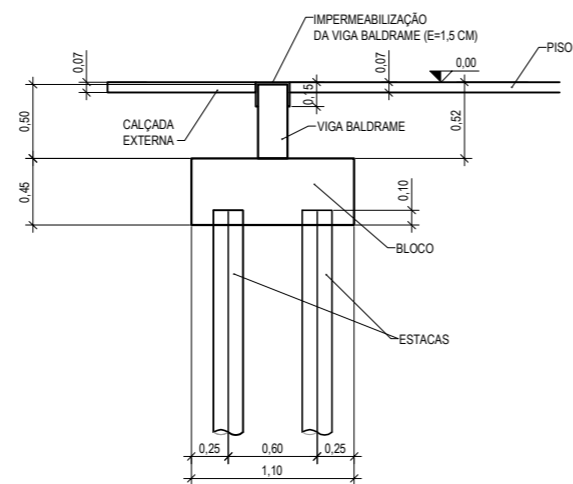
CORTE

ESC. 1:25



CORTE ESQUEMÁTICO

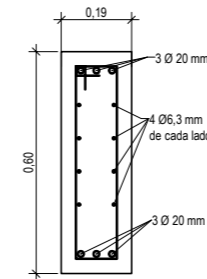
ESC. 1:25
(BLOCO 1 ESTACAS DE Ø20cm)



ESTRIBO Ø5,0mm
A CADA 15cm

**SEÇÃO TÍPICA DAS VIGAS DO MEZANINO
(VIGAS DO MEIO)**

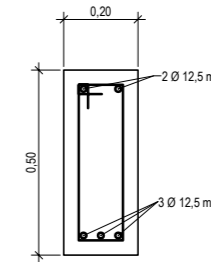
ESC. 1:10



ESTRIBO Ø5,0mm
A CADA 15cm

**SEÇÃO TÍPICA DAS VIGAS DO MEZANINO
(VIGAS DE BORDA)**

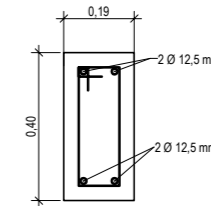
ESC. 1:10



ESTRIBO Ø6,3mm
A CADA 15cm

SEÇÃO TÍPICA DAS VIGAS BALDRAMES

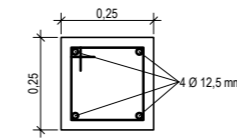
ESC. 1:10



ESTRIBO Ø6,3mm
A CADA 15cm

SEÇÃO TÍPICA DE VIGAS

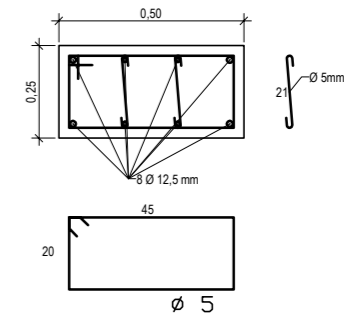
ESC. 1:10



ESTRIBO Ø5,0mm
A CADA 12cm

SEÇÃO TÍPICA DOS PILARES 25x25cm

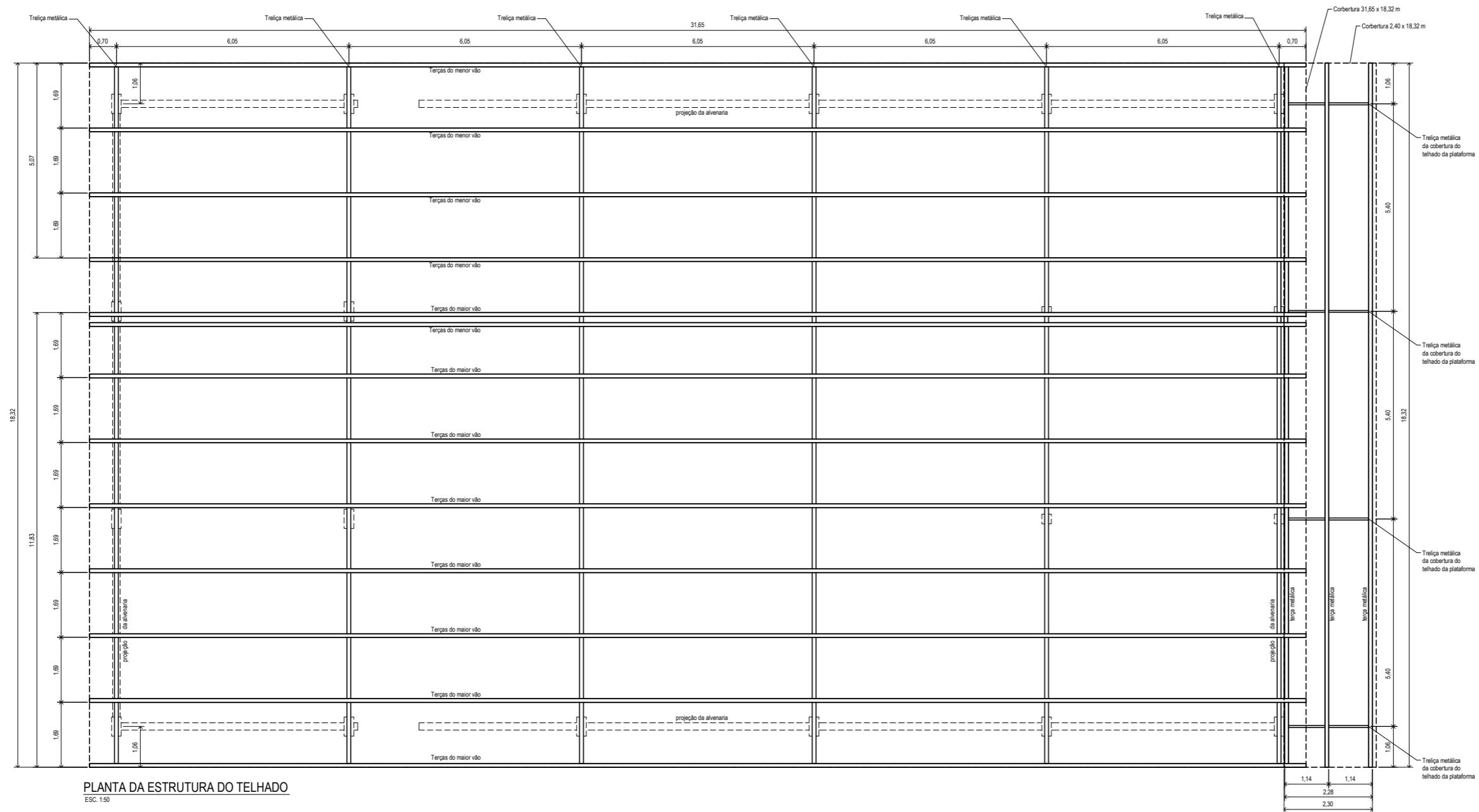
ESC. 1:10



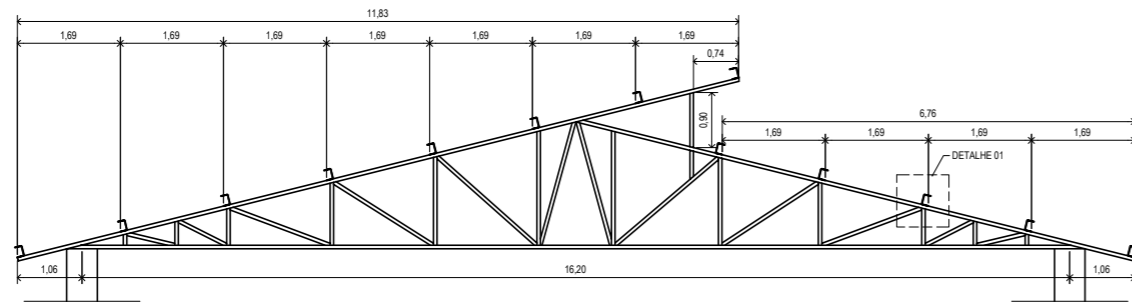
ESTRIBO Ø5,0 mm
A CADA 12cm

SEÇÃO TÍPICA DOS PILARES 25x50cm

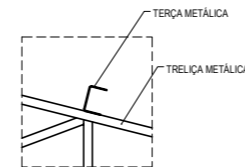
ESC. 1:10



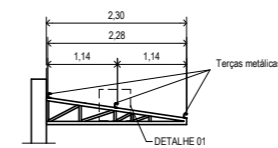
PLANTA DA ESTRUTURA DO TELHADO
ESC. 1:50



VISTA FRONTAL DA TRELIÇA
ESC. 1:50



DETALHE 01
ESC. 1:20



VISTA FRONTAL DA TRELIÇA DA PLATAFORMA
ESC. 1:50

NOTAS:

- As treliças e terças deverão ser fabricadas em perfis metálicos à escolha do produtor, como: perfil U normal ou enrijecido, cantoneira dupla, perfil T, tubo retangular ou quadrado, outras.
- As espessuras dos perfis metálicos tubulares utilizados nas barras verticais e horizontais da fachada deverão ser definidas pelo fornecedor com base em dimensionamento que considere os esforços na cobertura, a carga de vento e o enrijecimento da estrutura.
- Deverão também ser projetados e fabricados os contraventamentos "horizontais" e verticais entre as treliças, devendo-se evitar contraventamentos verticais nas fachadas.