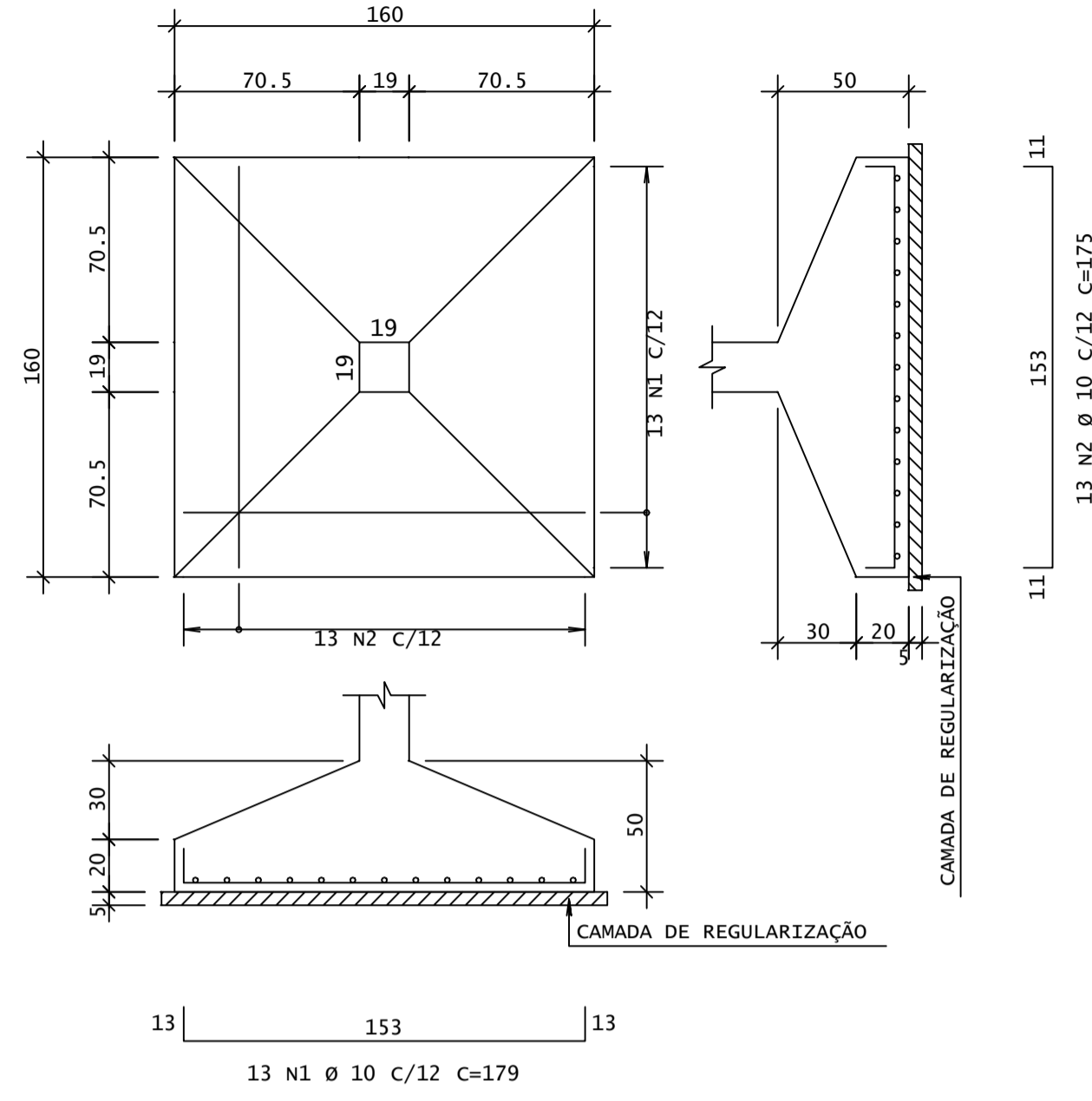
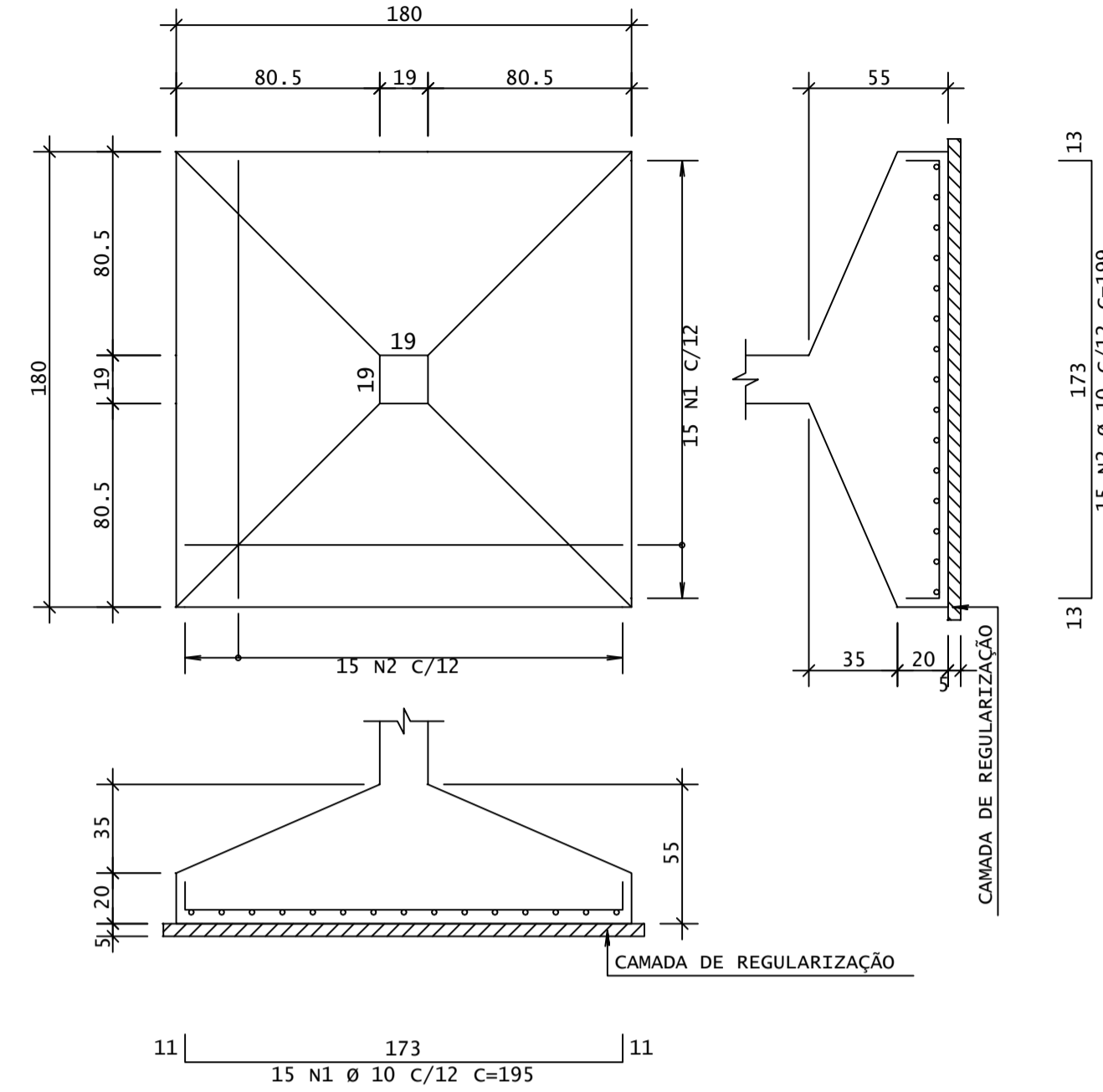


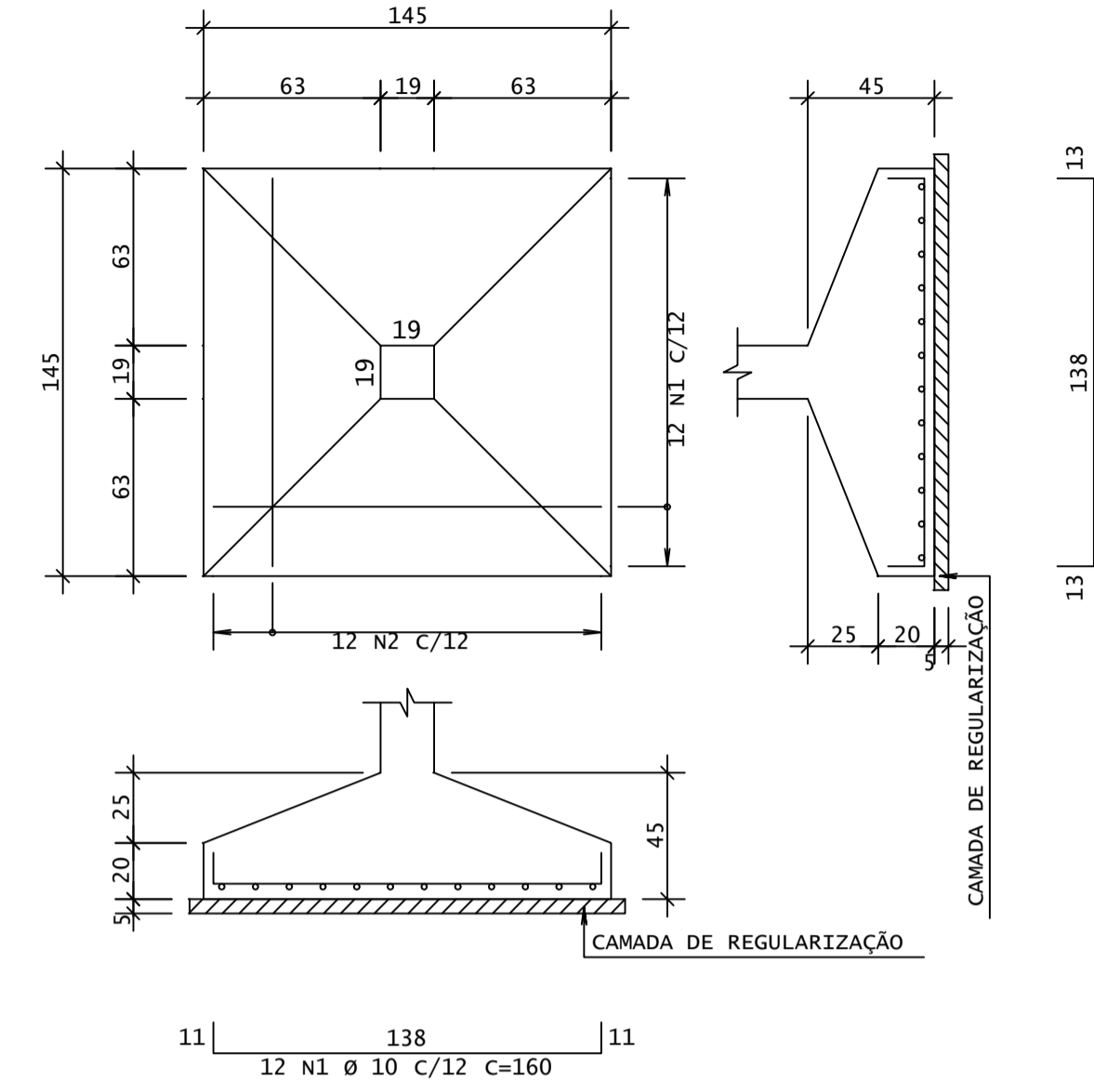
S1
(6 X) (Esc 1:25)
(VÁLIDO P/PILARES:P1, P4, P6, P8, P12, P14).
CONCRETO:0.80 m3/SAPATA
FÔRMA:1.28 m2/SAPATA



S2
(5 X) (Esc 1:25)
(VÁLIDO P/PILARES:P2, P3, P9).
CONCRETO:1.07 m3/SAPATA
FÔRMA:1.44 m2/SAPATA



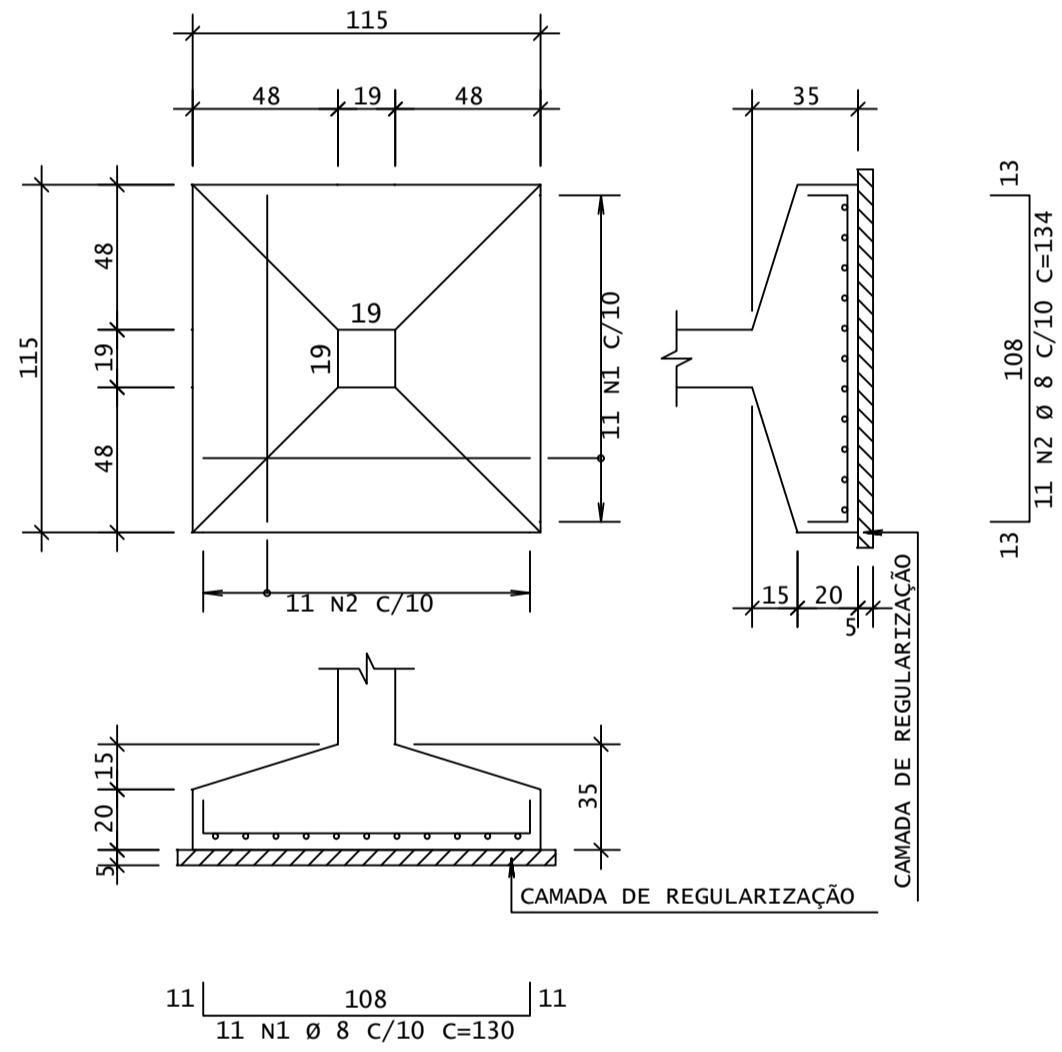
S3
(5 X) (Esc 1:25)
(VÁLIDO P/PILARES:P5, P7, P10, P11, P16).
CONCRETO:0.62 m3/SAPATA
FÔRMA:1.16 m2/SAPATA



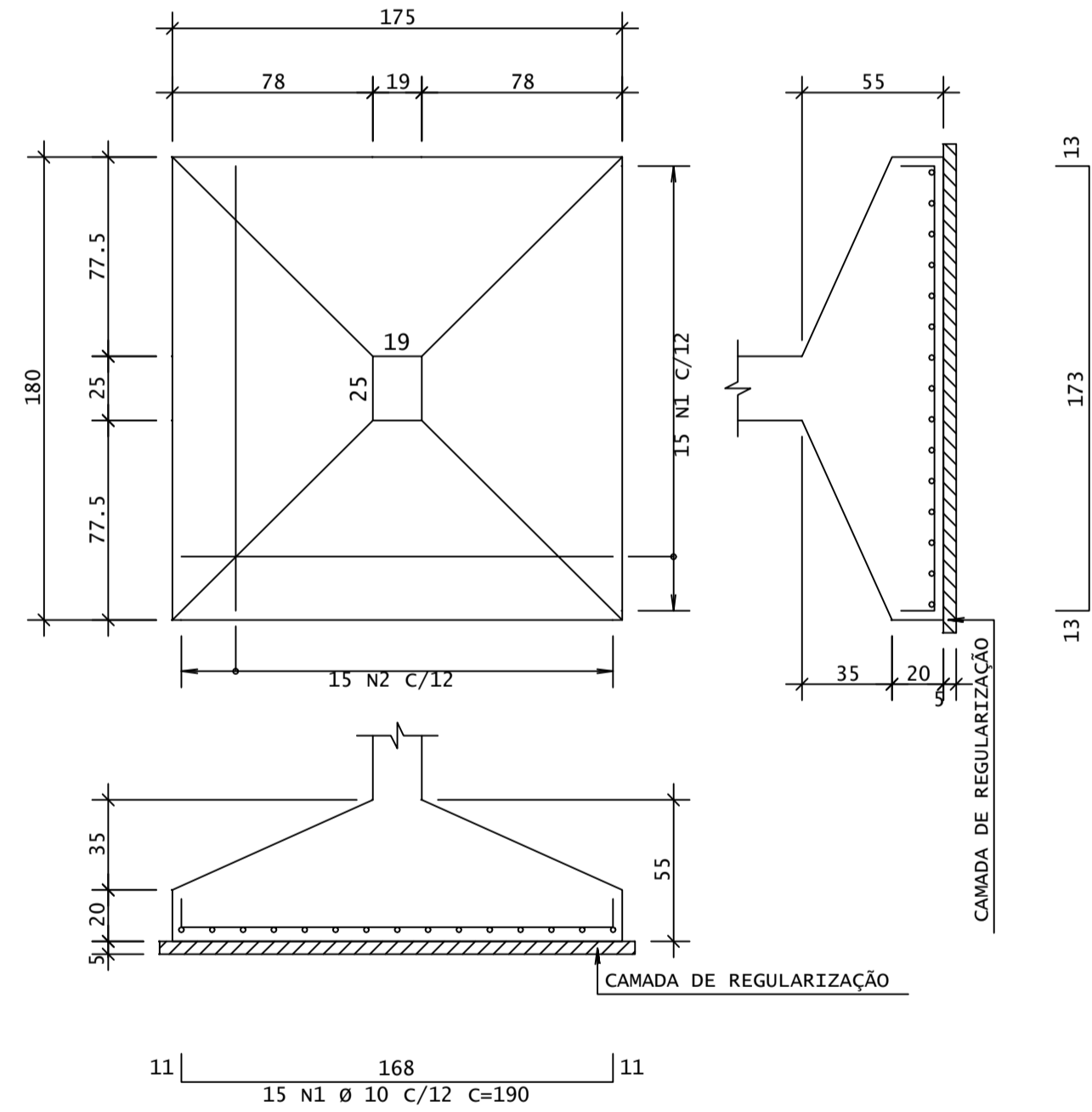
AÇO	POS	BIT (mm)	QUANT	COMPRIMENTO	
				UNIT (cm)	TOTAL (cm)
P1=P4 (X2)					
50	1	12.5	8	230	1840
60	2	5	22	59	1298
50	3	12.5	8	439	3512
60	4	5	60	63	3780
P2=P3=P8=P10=P14=P18=P19 (X7)					
50	1	10	28	201	5628
60	2	5	91	59	5369
50	3	10	28	439	12292
60	4	5	259	63	16317
P5=P6=P7=P9 (X4)					
50	1	10	16	201	3216
60	2	5	56	59	3304
50	3	10	16	342	5472
60	4	5	116	63	7308
P11=P12=P13=P16=P17 (X5)					
50	1	10	20	201	4020
60	2	5	70	59	4130
50	3	10	20	385	7700
60	4	5	230	63	14490
50	5	10	20	196	3920
P15					
50	1	10	4	201	804
60	2	5	14	71	994
50	3	10	4	385	1540
60	4	5	46	75	3450
50	5	10	4	196	784
S1 (X6)					
50	1	10	78	179	13962
50	2	10	78	175	13650
S2 (X3)					
50	1	10	45	195	8775
50	2	10	45	199	8955
S3 (X5)					
50	1	10	60	160	9600
50	2	10	60	164	9840
S4 (X4)					
50	1	8	44	130	5720
50	2	8	44	134	5896
S5 (X5)					
50	1	10	75	190	14250
50	2	10	75	199	14925

AÇO	RESUMO DE AÇO		PESO (kg)
	BIT (mm)	COMPR (m)	
60	5	604	93
50	8	116	46
50	10	1393	860
50	12.5	54	52
Peso Total			93 kg
Peso Total			957 kg

S4
(4 X) (Esc 1:25)
(VÁLIDO P/PILARES:P13, P17, P18, P19).
CONCRETO:0.34 m3/SAPATA
FÔRMA:0.92 m2/SAPATA



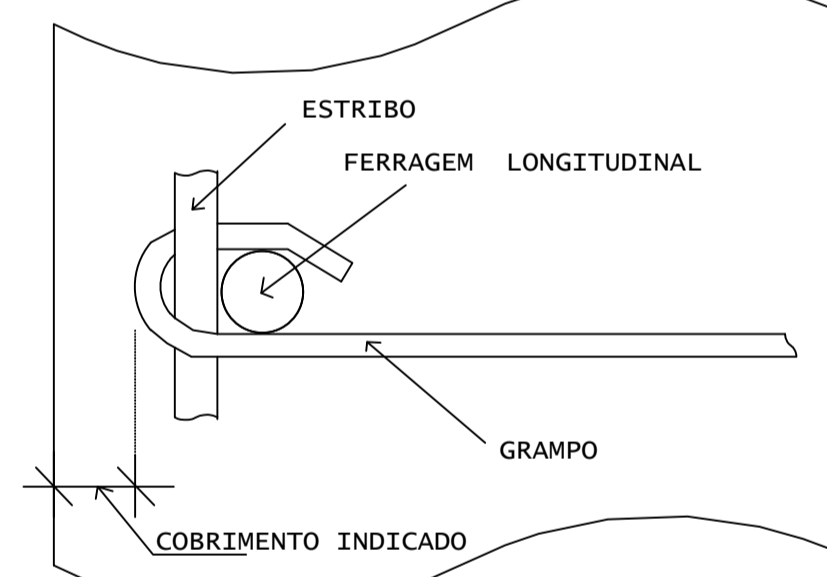
S5
(5 X) (Esc 1:25)
(VÁLIDO P/PILAR:P15).
CONCRETO:1.05 m3/SAPATA
FÔRMA:1.42 m2/SAPATA



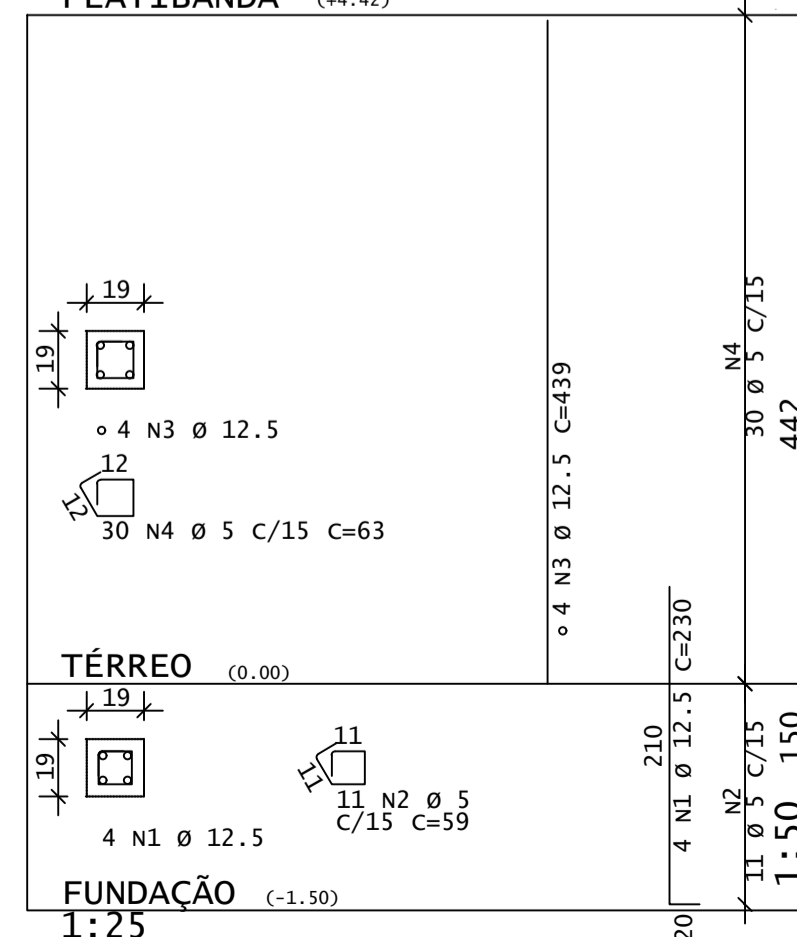
DIÂMETROS DE CURVATURA

Ø	8	10	12	16	20	22	25
db (cm)	4	5	6.5	8	16	18	20

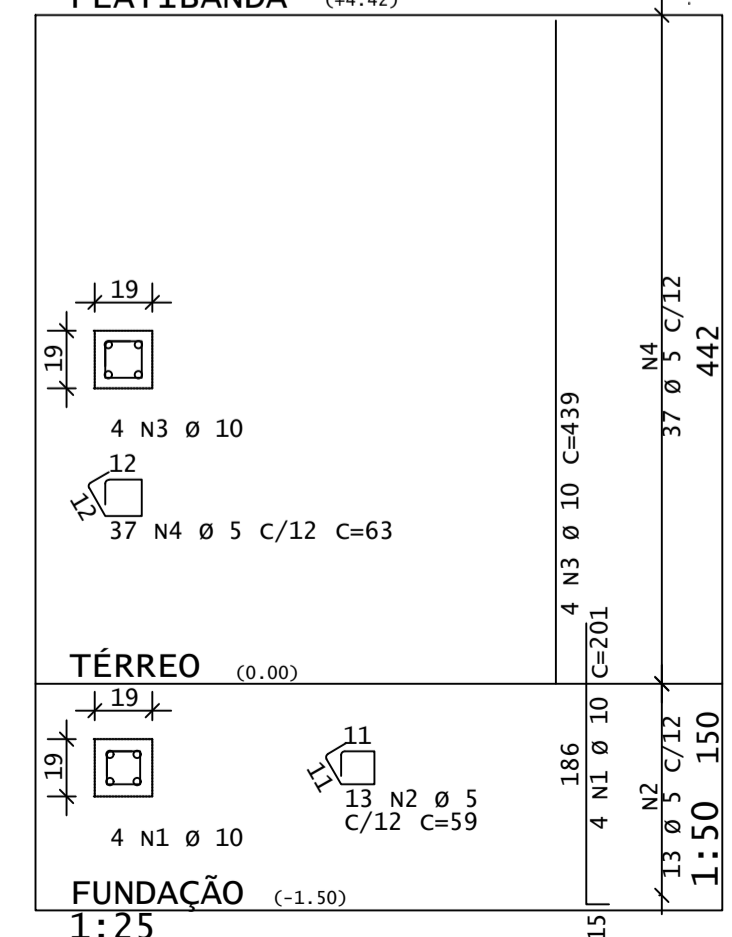
DETALHE P/ FIXAÇÃO DE GRAMPOS
VISTA EM PLANTA



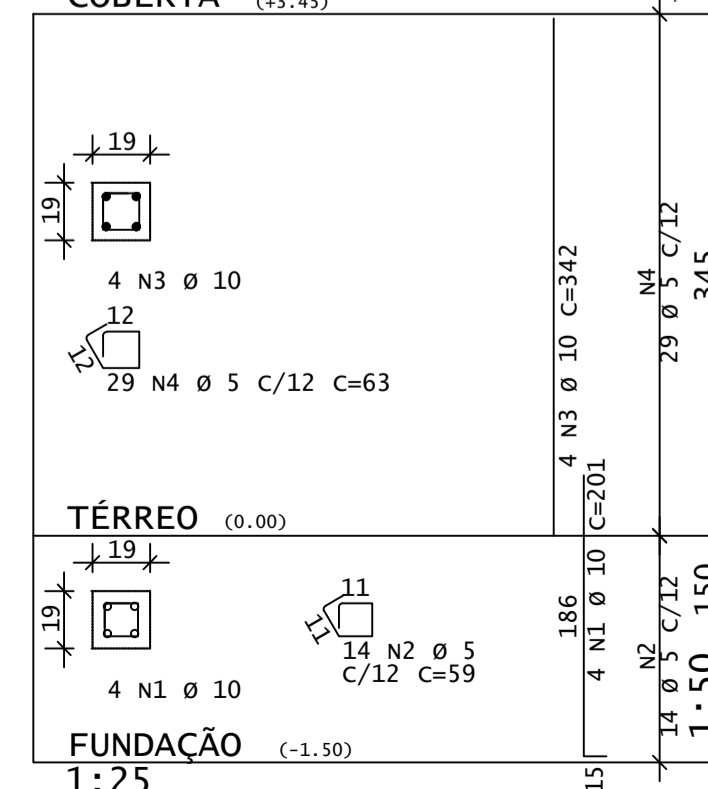
P1=P4
PLATIBANDA (+4.42)



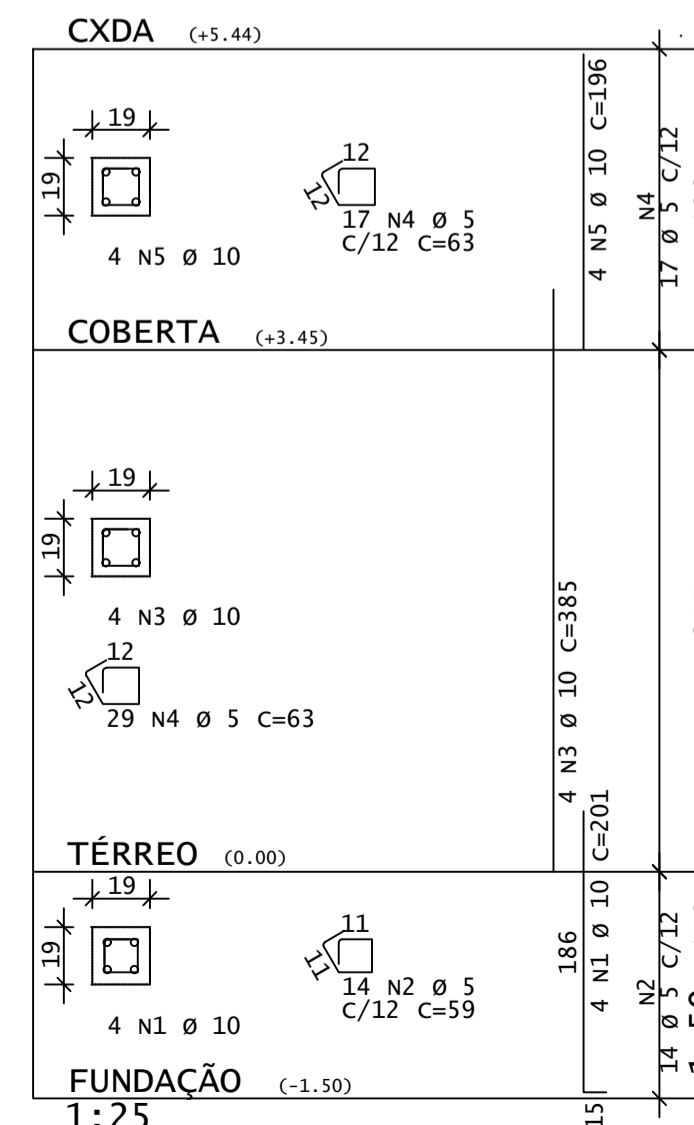
P2=P3=P8=P10=P14=P18=P19
PLATIBANDA (+4.42)



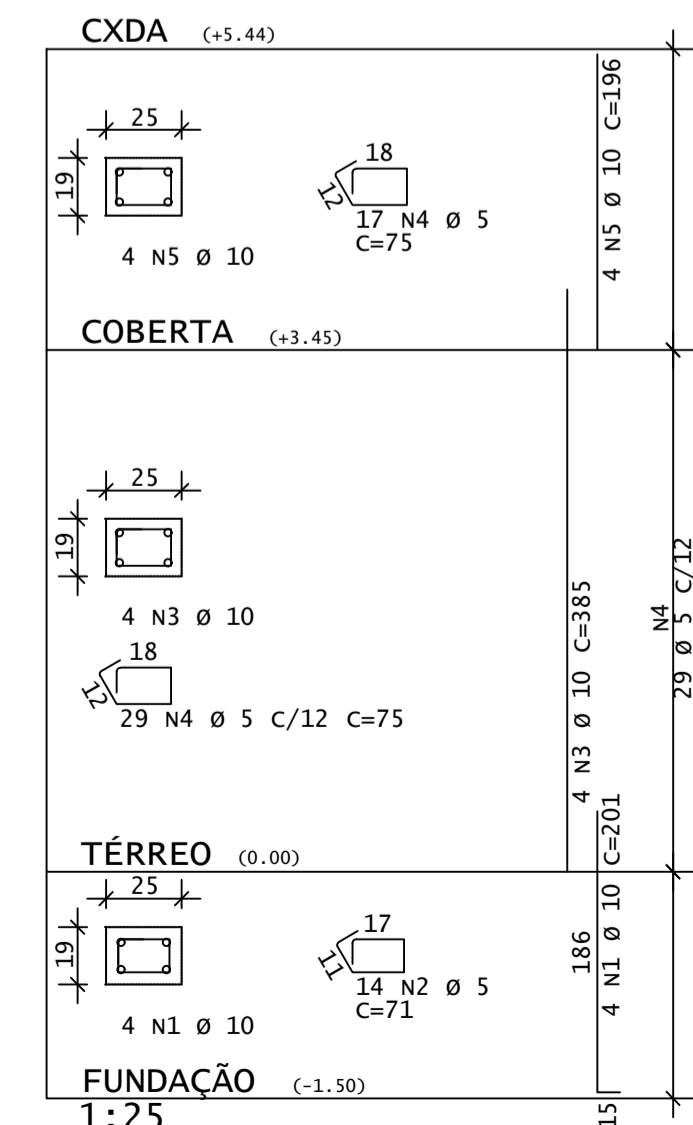
P5=P6=P7=P9
COBERTA (+3.45)



P11=P12=P13=P16=P17
CXDA (+5.44)



P15
CXDA (+5.44)



REV	DATA	DESCRIÇÃO
00	17/02/2020	MONTAGEM INICIAL
ASSINATURAS E APROVAÇÃO		
PROJETISTA	PROPRIETÁRIO	
LEONARDO SILVEIRA LIMA ENGENHEIRO CIVIL - RNP: 0911581987		
APROVAÇÃO		
GEO PAC AV. PADRE ANTÔNIO TOMAS, N° 240, SALAS 301/302, BARRO ALZATEIA, FORTALEZA, CE. FONE: (85) 3341-1141, E-MAIL: GEO.PAC@GEO.PAC.COM.BR		
PROJETO: CONSTRUÇÃO DE POSTO DE SAÚDE NA LOCALIDADE DE QUIXABA CONTEÚDO: PROJETO DE ESTRUTURAS EM CONCRETO FUNDAMENTOS E PILARES IDENTIFICAÇÃO DOS DESENHOS: P1 FUNDAMENTOS - SAPATAS ISOLADAS G2 PILARES		
FISCAL: QUIXABA, ARACATICE	DATA: FEVEREIRO/2020	FRENCHA: 02/13
REVISOR: JM/SOS	ESCALA: INDICADA	CONTROLE: ARCT - 20/24