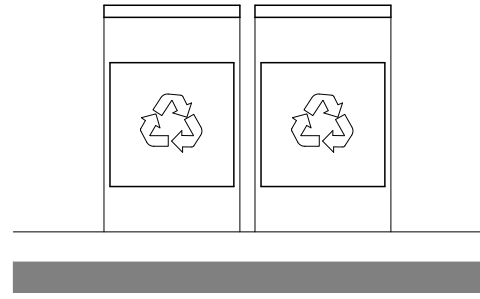
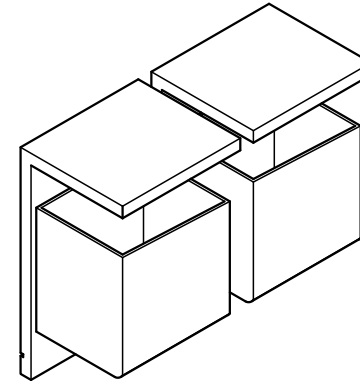


01 PLANTA BAIXA - LIXEIRA
ESCALA 1/25

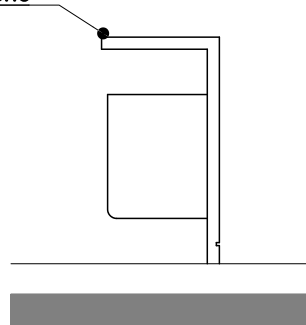


02 VISTA FRONTAL - LIXEIRA
ESCALA 1/25



03 PERSPECTIVA
ESCALA 1/25

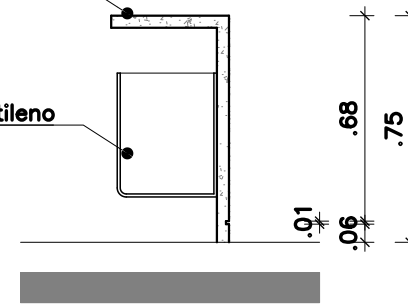
Lixeira pré-moldada em concreto com proteção impermeabilizante acabamento liso polido e pintura acrílica na cor cinza com cesto em plástico polietileno



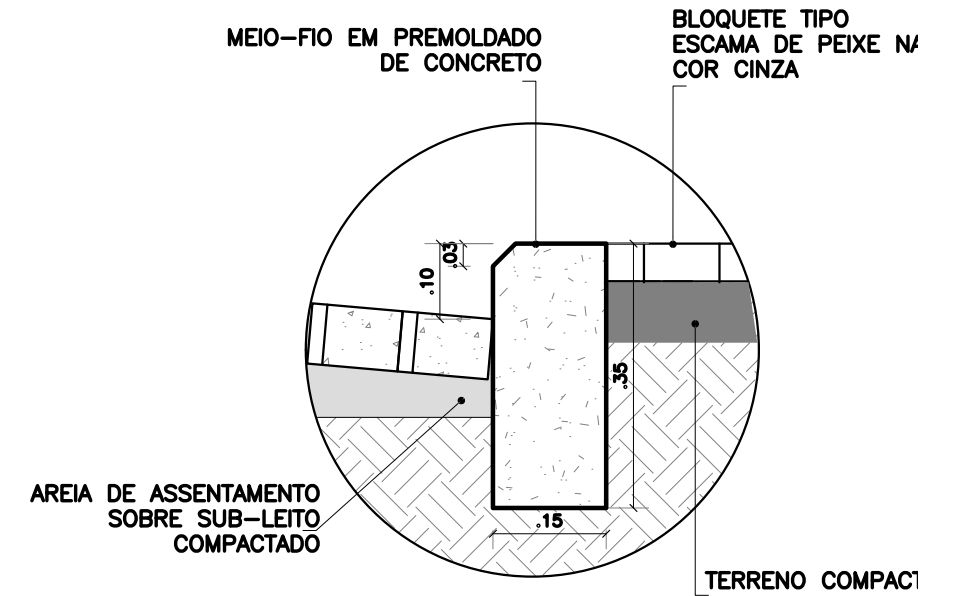
04 VISTA LATERAL - LIXEIRA
ESCALA 1/25

Estrutura pré-moldada em concreto

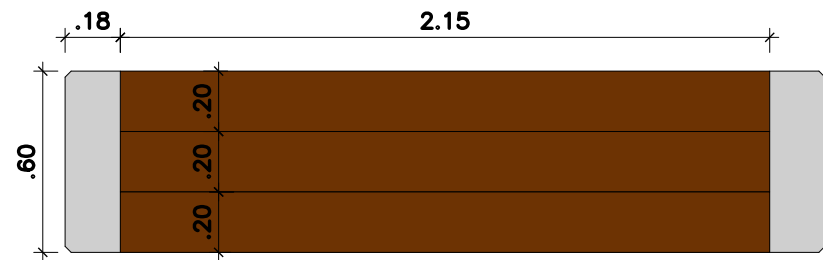
Cesto em plástico polietileno



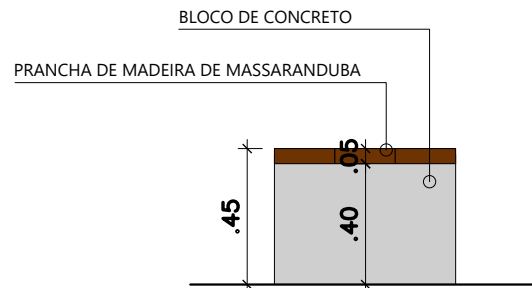
05 CORTE TRANSVERSAL - LIXEIRA
ESCALA 1/25



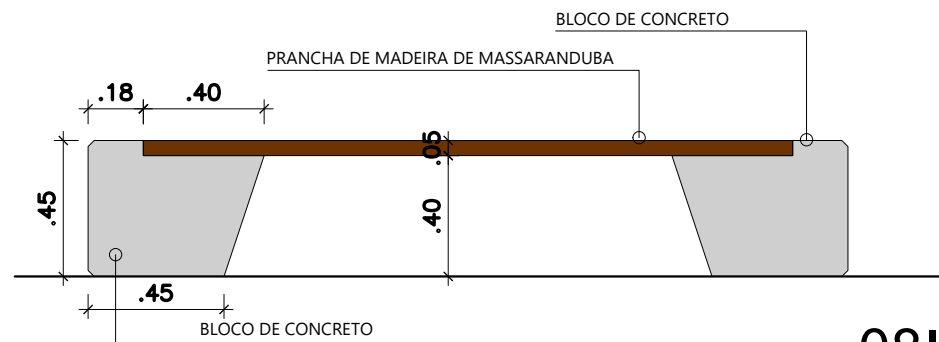
D01 DETALHE MEIO FIO 01: PASSEIO-VIA
ESCALA 1/10



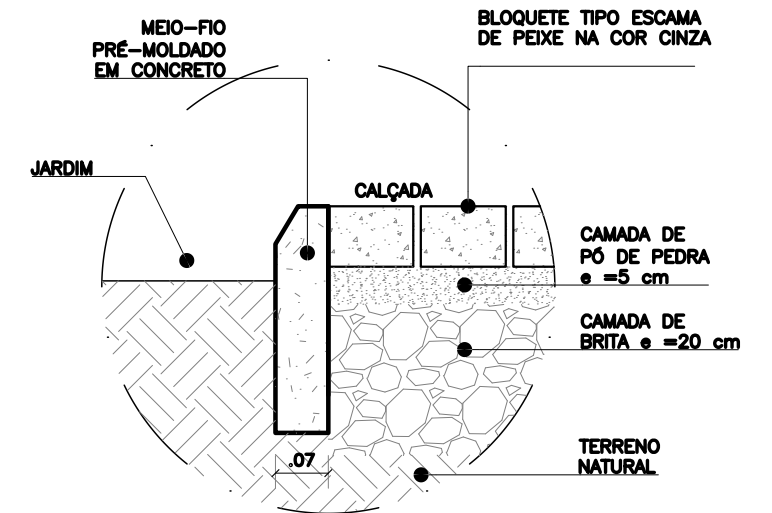
06 PLANTA BAIXA - BANCO
ESCALA 1/25



07 CORTE TRANSV. - BANCO
ESCALA 1/25



08 CORTE LONGIT. - BANCO
ESCALA 1/25



D02 DETALHE MEIO FIO 02: PASSEIO-CANTEIRO
ESCALA 1/10

	PROJETO: PRAÇA VILA SÃO JOSÉ	ASSUNTO: DETALHES CONSTRUTIVOS	PRANCHA:
	ARQUITETO: PEDRO ELIAS C. M. DE OLIVEIRA - CAU: 173917-4	DESENHO: PEDRO ELIAS	ESCALA: indicada
	SECRETARIA: SEINFRA	DATA: JAN/2020	
	LOCAL: VILA SÃO JOSÉ - ARACATI, CE		
			6/9