

RELAÇÃO DO AÇO

ELEMENTO	AÇO	N	DIAM (mm)	QUANT	C.UNIT (cm)	C.TOTAL (cm)
V1	CA60	1	5.0	26	135	3510
	CA50	2	6.3	6	679	4074
	CA50	3	6.3	2	69	138
	CA50	4	8.0	3	685	2055
V2	CA50	5	8.0	1	703	703
	CA50	6	8.0	2	709	1418
	CA60	1	5.0	41	75	3075
	CA50	2	8.0	2	669	1338
	CA50	3	8.0	2	685	1370
	CA60	1	5.0	26	135	3510
V3	CA50	2	6.3	6	679	4074
	CA50	3	6.3	2	69	138
	CA50	4	8.0	3	685	2055
	CA50	5	8.0	1	703	703
V4	CA50	6	8.0	2	709	1418
	CA60	1	5.0	74	135	9990
	CA50	2	6.3	6	574	3444
	CA50	3	8.0	3	257	771
	CA50	4	10.0	1	445	445
	CA50	5	10.0	2	632	1264
V5	CA50	6	12.5	2	325	650
	CA60	1	5.0	16	75	1200
	CA60	2	5.0	2	258	516
	CA50	3	8.0	1	195	195
	CA50	4	8.0	2	258	516
	CA60	1	5.0	21	135	2835
V6	CA50	2	6.3	6	577	3462
	CA50	3	8.0	3	249	747
	CA50	4	8.0	1	230	230
	CA50	5	8.0	1	608	608
	CA50	6	8.0	2	614	1228
	CA50	7	10.0	2	325	650
V7	CA60	1	5.0	16	75	1200
	CA60	2	5.0	2	258	516
	CA50	3	8.0	1	195	195
	CA50	4	8.0	2	258	516
	CA60	1	5.0	21	135	2835
	CA50	2	6.3	6	574	3444
V8	CA50	3	8.0	3	257	771
	CA50	4	10.0	1	223	223
	CA50	5	10.0	2	322	644
	CA50	6	10.0	1	439	439
	CA50	7	10.0	2	631	1262

RESUMO DO AÇO

AÇO	DIAM (mm)	C.TOTAL (m)	PESO + 0% (kg)
CA50	6.3	187.7	46.9
	8.0	168.4	66.4
	10.0	49.3	30.4
CA60	12.5	6.5	6.3
	5.0	349.9	53.9
PESO TOTAL (kg)			
CA50		149	
CA60		53.9	

Volume de concreto (C-30) = 3.10 m³
Área de forma = 50.31 m²

ASSINATURAS E APROVAÇÃO

PROJETISTA: _____ PROPRIETÁRIO: _____

LEONARDO SILVEIRA LIMA
ENGENHEIRO CIVIL - RNP: 0601581067

APROVAÇÃO

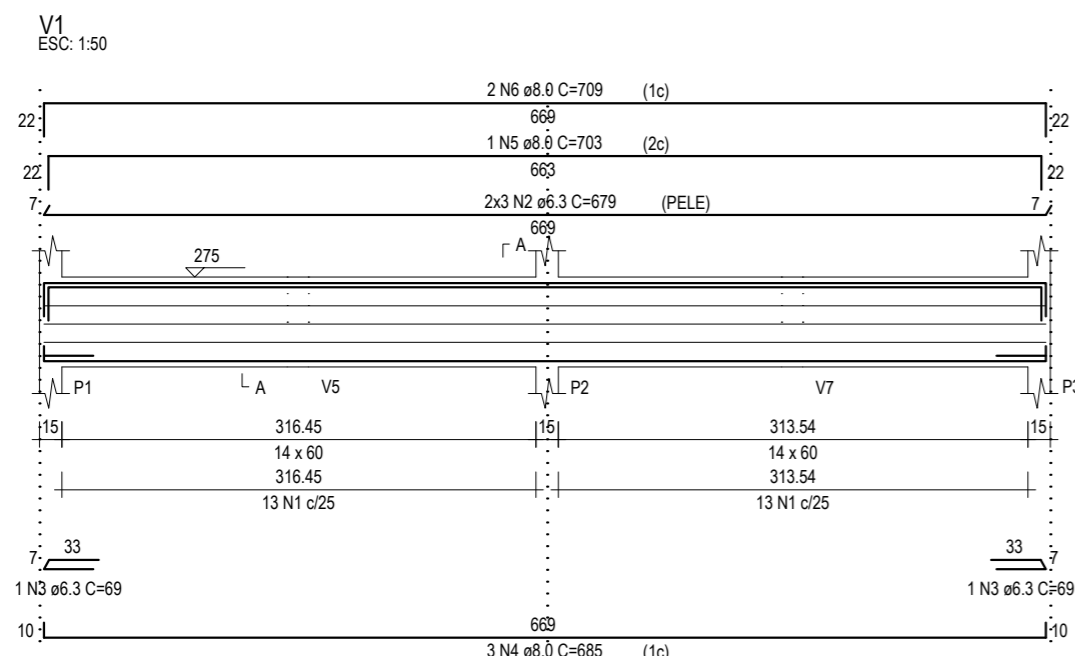
PROPRIETÁRIO:
PREFEITURA MUNICIPAL DE ARACATI

OBRA:
CONSTRUÇÃO DE LARGO NA MAJORLÂNDIA

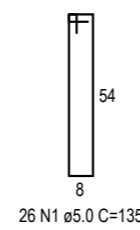
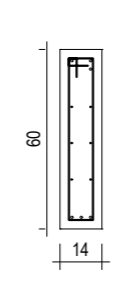
PROJETO:
PROJETO ESTRUTURAL

IDENTIFICAÇÃO DOS DESENHOS:
DETALHE - VIGAS SUPERIORES

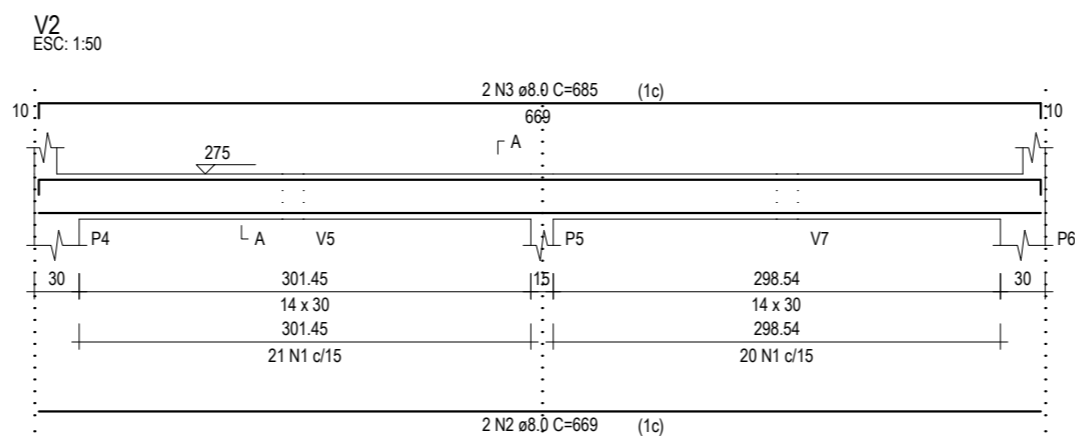
LOCAL: MAJORLÂNDIA - ARACATICE	DATA: FEVEREIRO/2019	PRANCHA: 09/12
DESENHO: MATEUS DANTAS	ESCALA: INDICADA	CONTROLE: ARCT - 2019 07



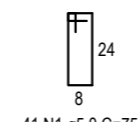
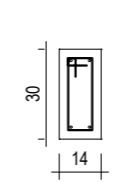
SEÇÃO A-A
ESC: 1:25



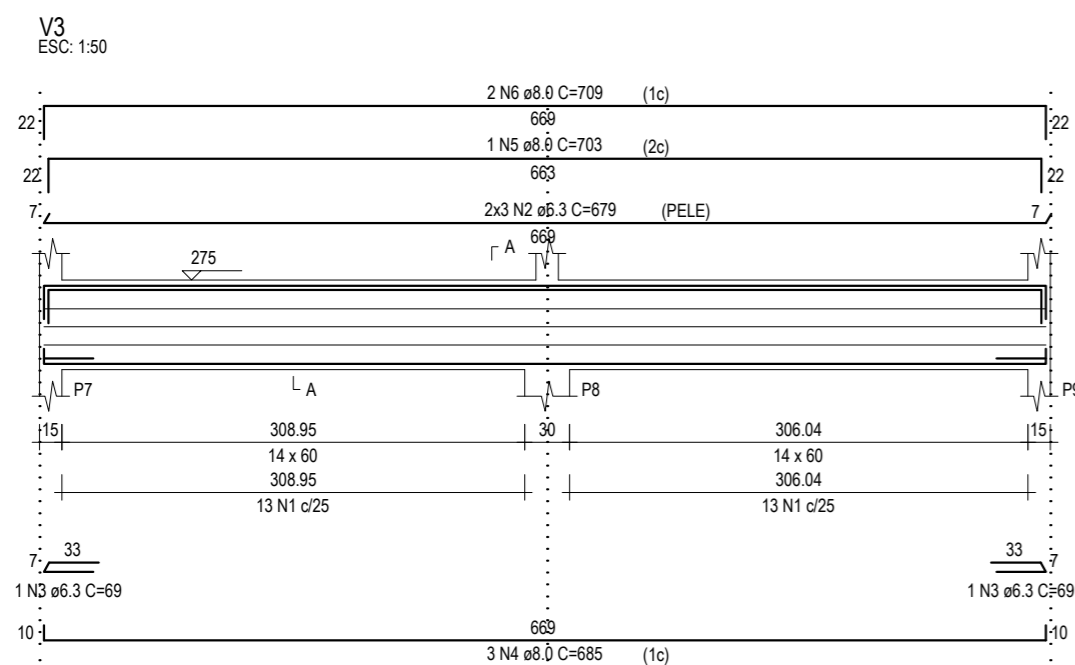
26 N1 ø5.0 C=135



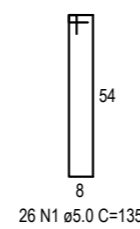
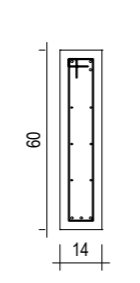
SEÇÃO A-A
ESC: 1:25



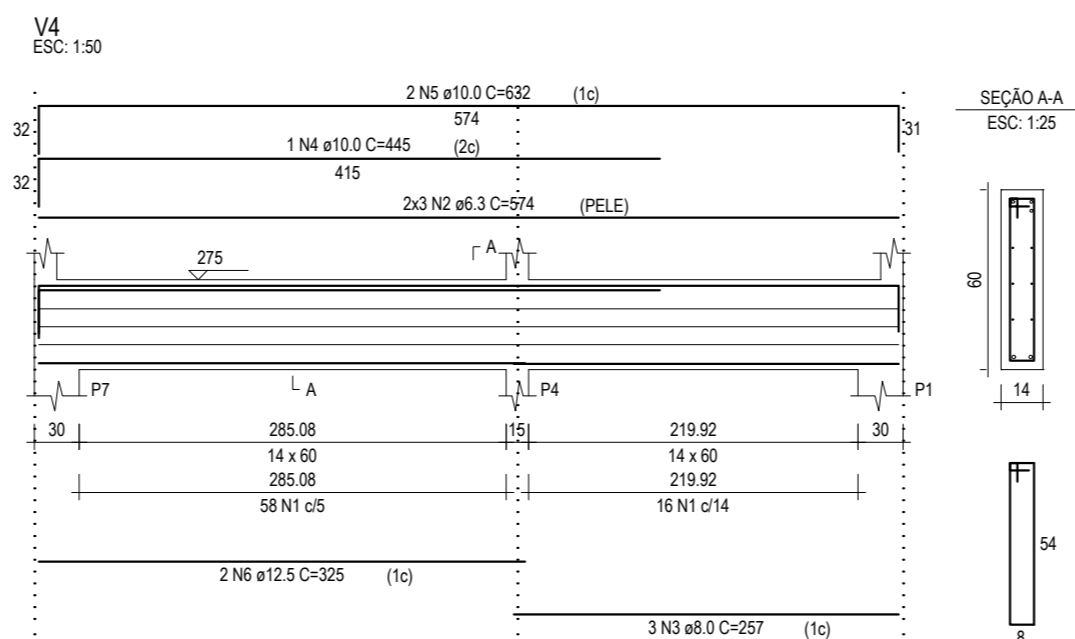
41 N1 ø5.0 C=75



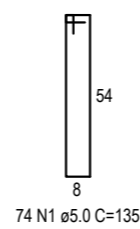
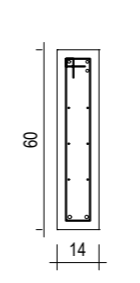
SEÇÃO A-A
ESC: 1:25



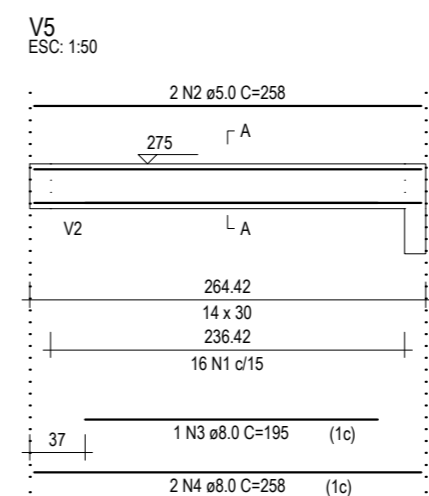
26 N1 ø5.0 C=135



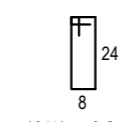
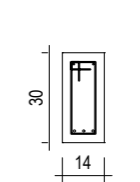
SEÇÃO A-A
ESC: 1:25



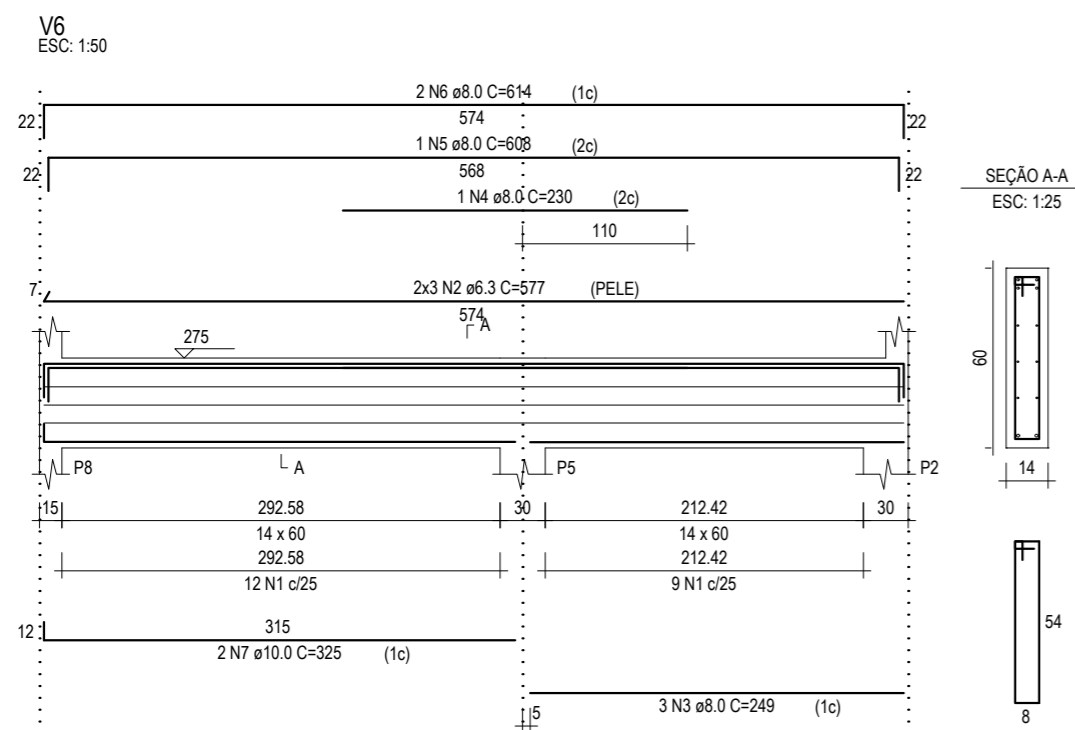
74 N1 ø5.0 C=135



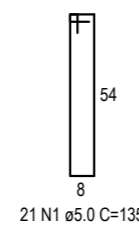
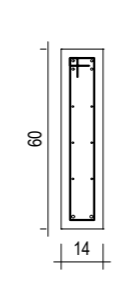
SEÇÃO A-A
ESC: 1:25



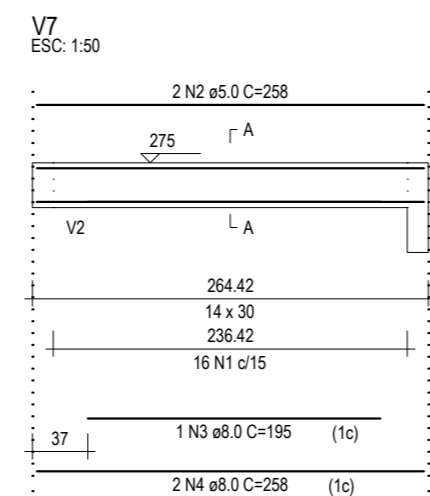
16 N1 ø5.0 C=75



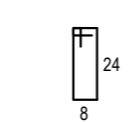
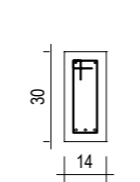
SEÇÃO A-A
ESC: 1:25



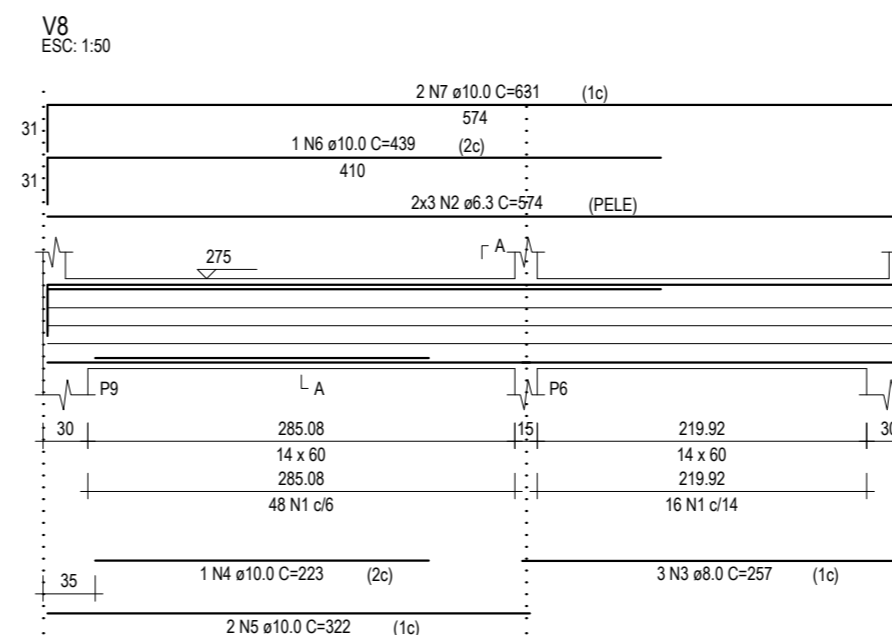
21 N1 ø5.0 C=135



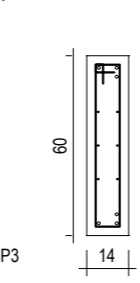
SEÇÃO A-A
ESC: 1:25



16 N1 ø5.0 C=75



SEÇÃO A-A
ESC: 1:25



64 N1 ø5.0 C=135