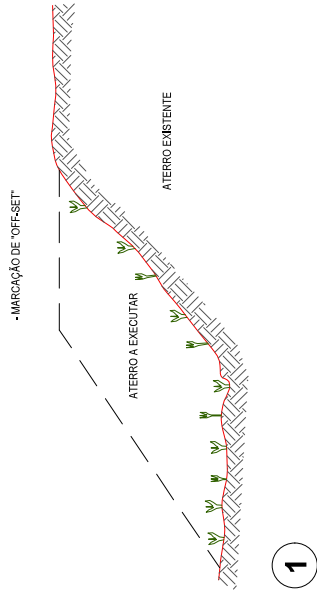




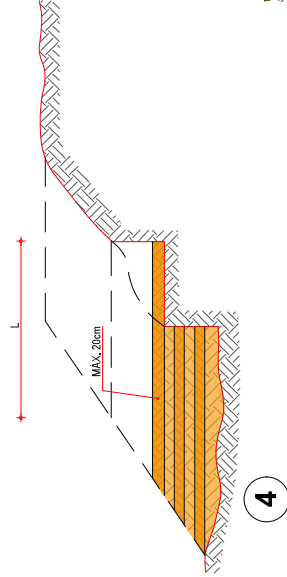


# RECOMPOSIÇÃO E ALARGAMENTO DA PLATAFORMA



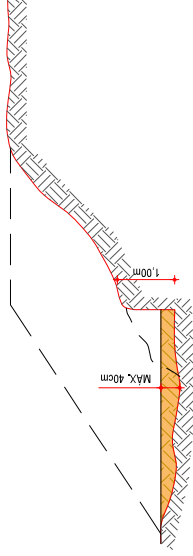
1

- EXECUÇÃO DE NOVO CORTE NO ATERRO EXISTENTE: PROCEDIMENTO IDÊNTICO ÀQUELE QUE A LARGURA 'L' ATINJA O MÍNIMO PARA O TRABALHO DO EQUIPAMENTO. PROSSEGUIMENTO ATÉ Atingir AS COTAS DA PLATAFORMA. (NOTA DE SERVIÇO)



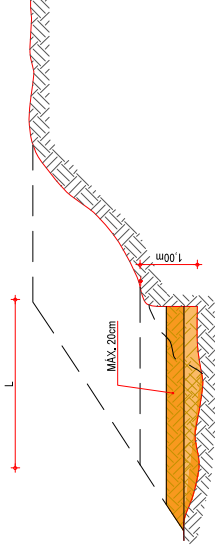
2

- LIMPEZA DA SMA DO ATERRO E DO TERRENO ONDE SERÁ EXECUTADO O ALARGAMENTO DA PLATAFORMA: CORTE DA SMA E REGULARIZAÇÃO DO TERRENO NATURAL, COMPACTAÇÃO DA 1ª CAMADA.



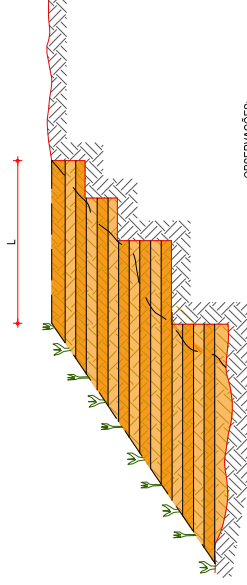
3

- EXECUÇÃO DA 2ª CAMADA COM MATERIAL DE EMPRÉSTIMO OU CORTE. PROCEDIMENTO IDÊNTICO ÀQUELE QUE A LARGURA 'L' SEJA A MÍNIMA NECESSÁRIA PARA OPERAÇÃO DE EQUIPAMENTO.



4

- REVESTIMENTO VEGETAL DA SMA DO ATERRO



5

OBSERVAÇÕES:

- 1- NA EXECUÇÃO DA PRIMEIRA CAMADA DE REGULARIZAÇÃO SOBRE O TERRENO NATURAL SERÁ PERMITIDA UMA ALTURA MÁXIMA DE 40cm, APÓS COMPACTAÇÃO.
- 2- CADA CAMADA SERÁ COMPACTADA.
- 3- O MATERIAL PROVENIENTE DE CADA CORTE DEVERÁ SER UTILIZADO NAS CAMADAS A COMPACTAR.
- 4- SOMENTE APÓS A COMPACTAÇÃO DE TODAS AS CAMADAS DE LIM DEGRAU E QUE SERÁ EXECUTADO UM NOVO CORTE.
- 5- ESTE PROCESSO DEVERÁ TAMBÉM SER UTILIZADO NO REPARO MECANIZADO DE TALUDES ERODIDOS OU AFETADOS POR ESCORREGIMENTO.
- 6- O VALOR DE 'L' CONSIDERADO NO CÁLCULO DOS VOLUMES FOI 5,50m.

ASSINATURAS E APROVAÇÃO

PROJETISTA:

PROPRIETÁRIO:

APROVAÇÃO

PROPRIETÁRIO:

PREFEITURA MUNICIPAL DE ARACATI

CERRA:

PAVIMENTAÇÃO NA CE-123 À LOCALIDADE DE TEOBALDO EM ARACATICE

PROJETO:

PROJETO ASFALTICA NA CE-123 À LOCALIDADE DE TEOBALDO

CONTEÚDO:

PROJETO DE TERRAPLENAGEM

IDENTIFICAÇÃO DOS RECURSOS:

RECOMPOSIÇÃO E ALARGAMENTO DA PLATAFORMA

LOCAL:

TEOBALDO - ARACATICE

DESENHO:

INDICADA

DATA:

JULHO/2018

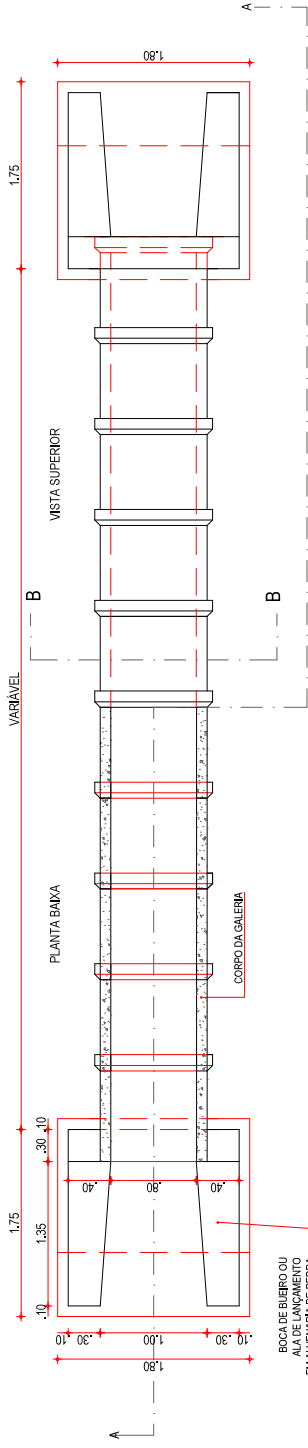
CONTROLE:

ARCI 2018 46

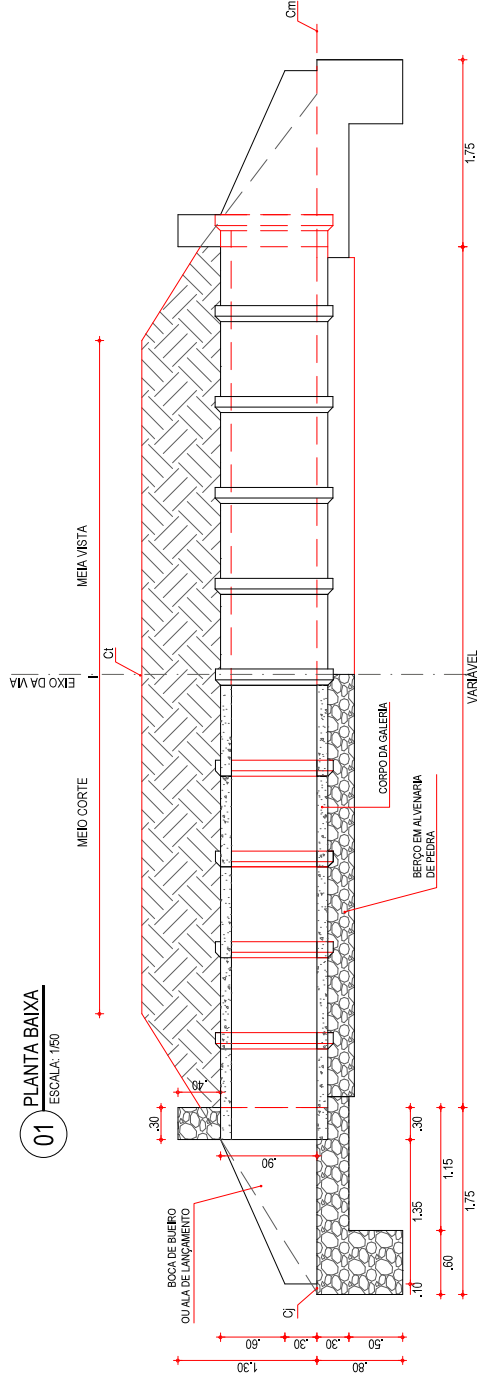
PRANCHA:

09/17

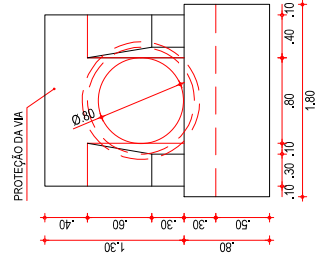
NOTAS



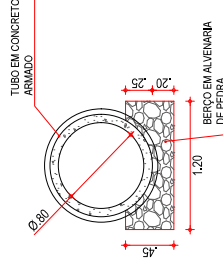
01 PLANTA BAIXA  
ESCALA: 1/50



02 CORTE AA  
ESCALA: 1/50



03 VISTA FRONTAL  
ESCALA: 1/50



04 CORTE BB  
ESCALA: 1/50

ASSINATURAS E APROVAÇÃO

PROJEITISTA

PROPRIETÁRIO

APROVAÇÃO

PROPRIETÁRIO:  
**PREFEITURA MUNICIPAL DE ARACATI**

OBRA:  
**PAVIMENTAÇÃO NA CE-123 À LOCALIDADE DE TEOBALDO EM ARACATICE**

PROJETO:  
**PAVIMENTAÇÃO ASFÁLTICA NA CE-123 À LOCALIDADE DE TEOBALDO**

CONTEÚDO:

PROJETO DE DRENAGEM

IDENTIFICAÇÃO DOS DESENHOS:

DETALHE BUENRO Ø80

01- PLANTA BAIXA

02- CORTE AA

03- VISTA

04- CORTE BB

LOCAL:  
TEOBALDO - ARACATICE

DESENHO

DATA:  
JULHO/2018

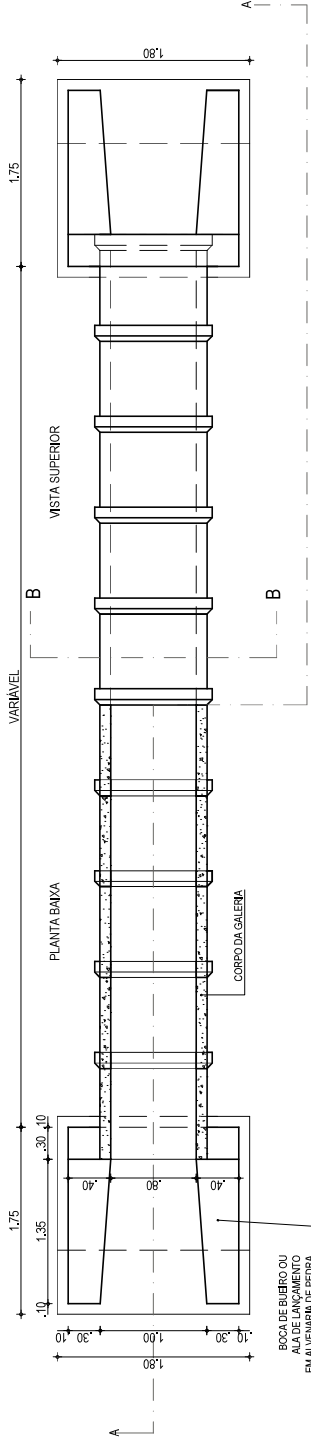
ESCALA:  
INDICADA

PRANCHAS

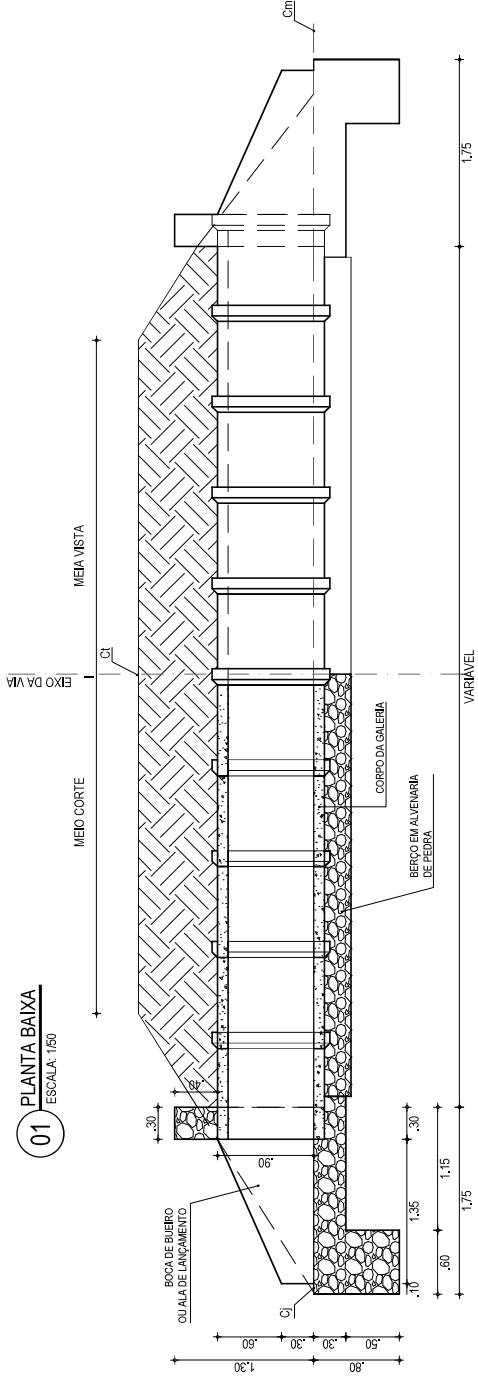
10/17

CONTRÔLE  
ARCI 2018 46

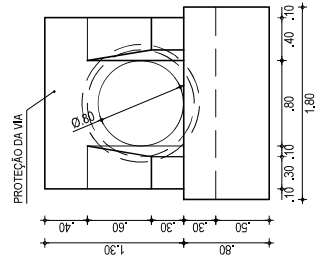
NOTAS



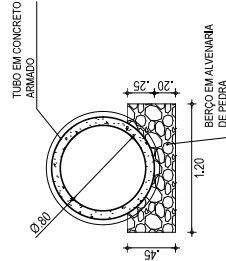
01 PLANTA BAIXA  
ESCALA: 1:50



02 CORTE AA  
ESCALA: 1:50



03 VISTA FRONTAL  
ESCALA: 1:50



04 CORTE BB  
ESCALA: 1:50

ASSINATURAS E APROVAÇÃO

PROJETISTA

PROPRIETÁRIO

APROVAÇÃO

PROPRIETÁRIO:  
PREFEITURA MUNICIPAL DE ARACATI

OBRA:  
PAVIMENTAÇÃO NO MUNICÍPIO DE ARACATI

PROJETO:  
PROJETO DE DRENAGEM DE TEOBALDO A CE 123

CONTEÚDO:  
DETALHE BUENRO BSTC Ø80

IDENTIFICAÇÃO DOS DESENHOS:

01. PLANTA BAIXA

02. CORTE AA

03. VISTA

04. CORTE BB

TOTAL:  
TEOBALDO-ARACATICE

DESENHO:  
INDICADA

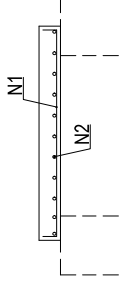
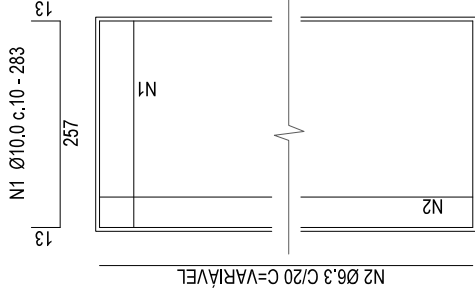
DATA:  
JULHO/2018

ESCALA:

PRANCHAS:  
10/17

CONTEÚDO:  
ARCT 2018.46

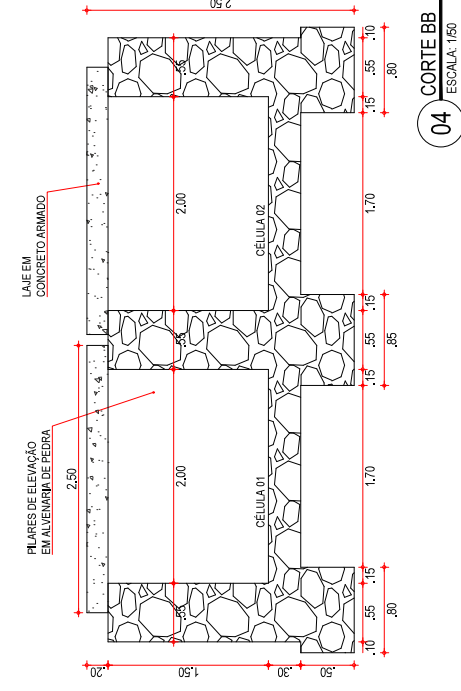
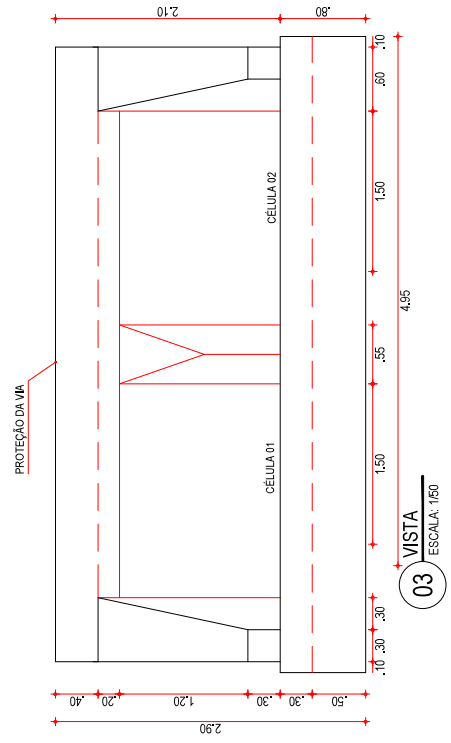
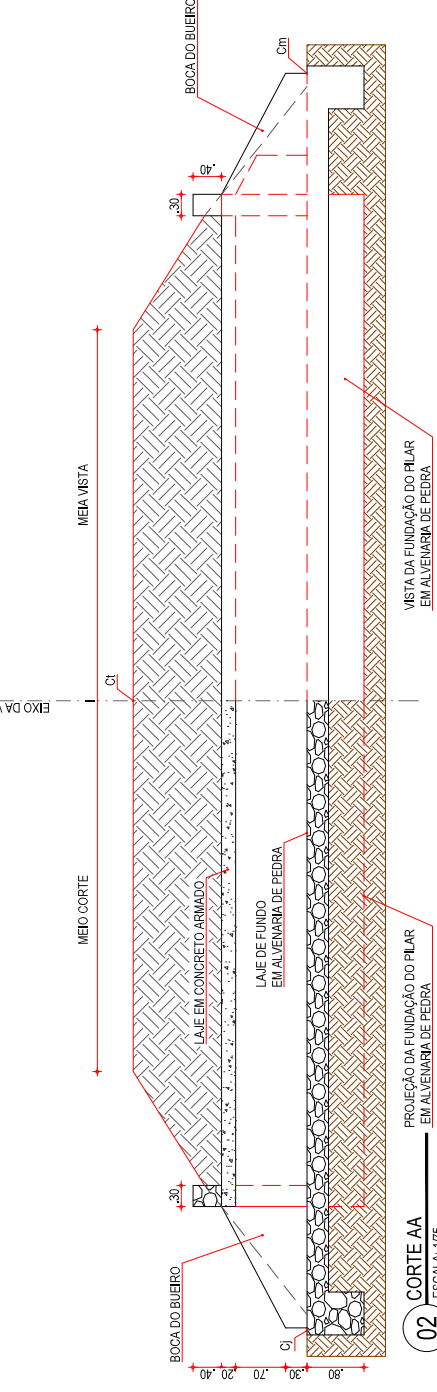
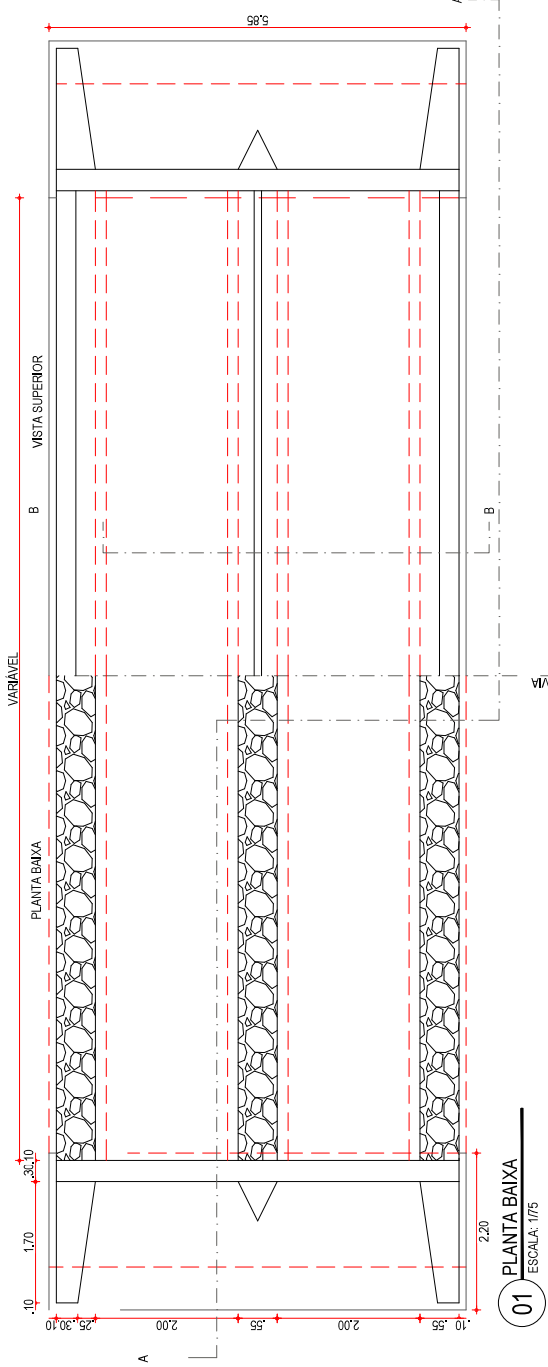
**FERRAGEM DA LAJE**



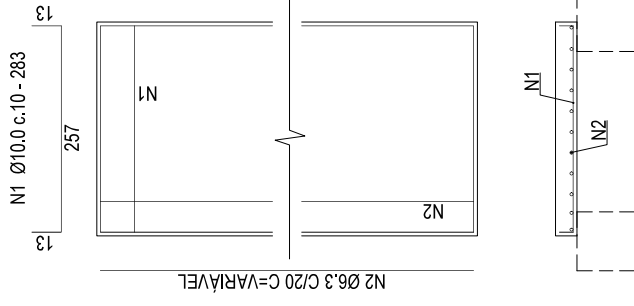
**ASSINATURAS E APROVAÇÃO**

PROPRIETÁRIO: <b>PREFEITURA MUNICIPAL DE ARACATI</b>	PROJELETA: 	PROPRIETÁRIO: 
OBRA: <b>PAVIMENTAÇÃO NA CE-123 À LOCALIDADE DE TEOBALDO EM ARACATICE</b>	APROVAÇÃO: 	
PROJETO: <b>PAVIMENTAÇÃO ASFÁLTICA NA CE-123 À LOCALIDADE DE TEOBALDO</b>		
CONTEÚDO: <b>PROJETO DE DRENAGEM</b>		
IDENTIFICAÇÃO DOS DESenhOS:		
<b>01 PLANTA BAIXA</b>		
<b>02 CORTE AA</b>		
<b>03 VISTA</b>		
<b>04 CORTE BB</b>		

LOCAL: <b>TEOBALDO - ARACATICE</b>	DATA: <b>JULHO/2018</b>	PRÁTICA: <b>11/17</b>
DESENHO: <b>INDICADA</b>	ESCALA: <b>ARCI</b>	CONTROLE: <b>ARCI 2018 46</b>



FERRAGEM DA LAJE



ASSINATURAS E APROVAÇÃO

PROJETISTA

PROPRIETÁRIO

APROVAÇÃO

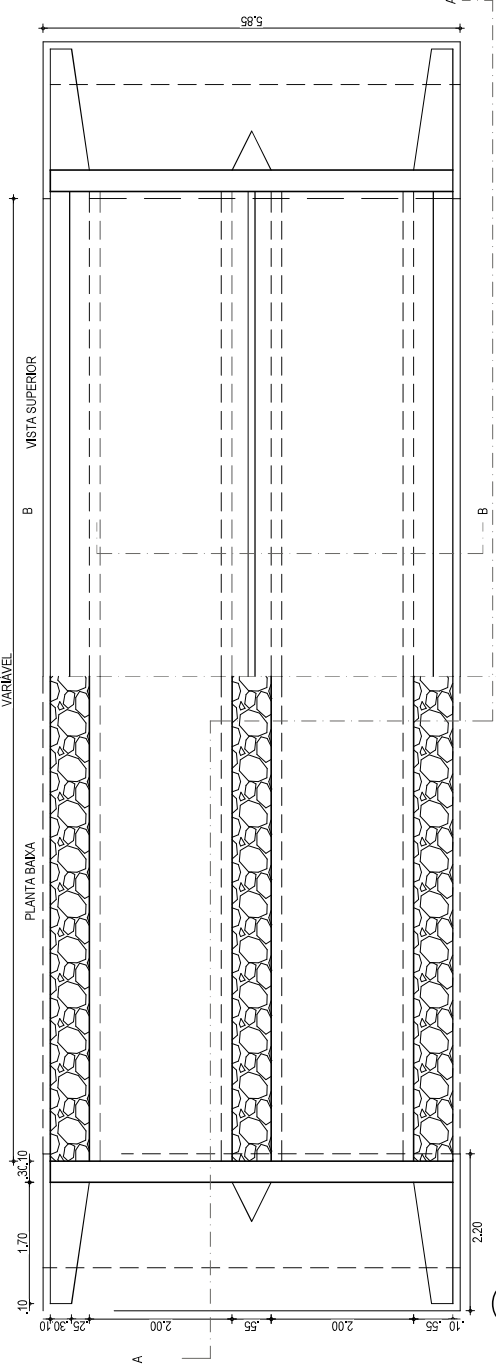
PROPRIETÁRIO:  
**PREFEITURA MUNICIPAL DE ARACATI**

OBRA:  
**PAVIMENTAÇÃO NO MUNICÍPIO DE ARACATI**

PROJETO:  
**PROJETO DE DRENAGEM DE TEOBALDO A CE 123**

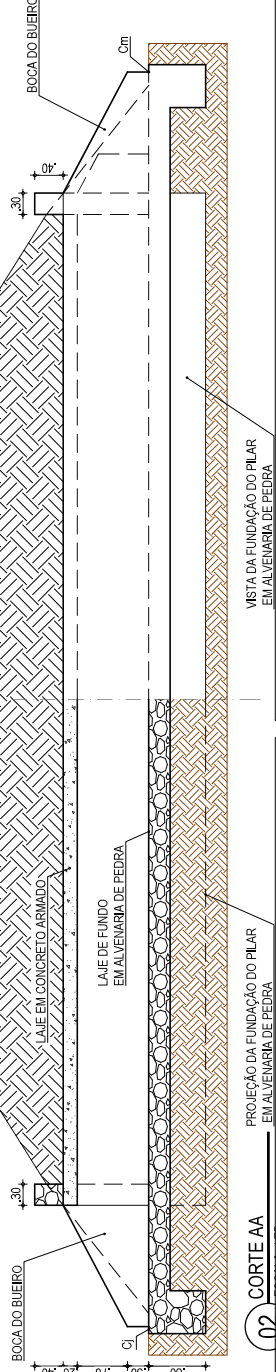
CONTEÚDO:  
 DETALHE BUJERO DUPLO CAPEADO DE CONCRETO (2,00x1,50)m

IDENTIFICAÇÃO DOS REFINOS:  
 01. PLANTA BAIXA  
 02. CORTE AA  
 03. VISTA  
 04. CORTE BB



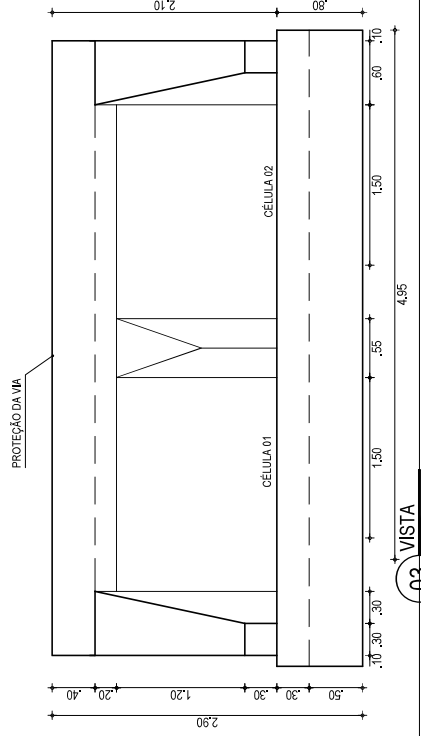
01 PLANTA BAIXA  
 ESCALA: 1/75

ESCALA: 1/75



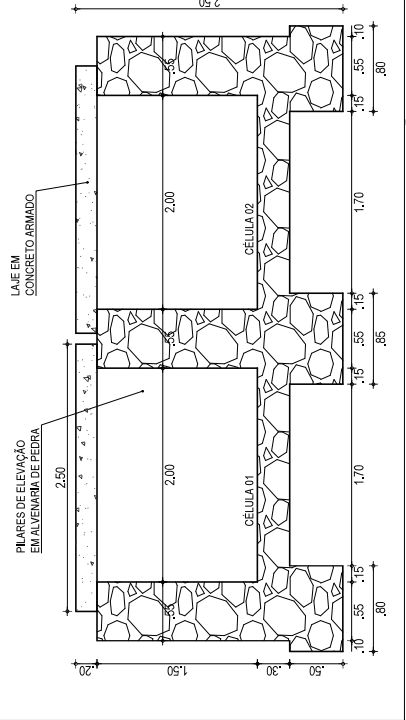
02 CORTE AA  
 ESCALA: 1/75

ESCALA: 1/75



03 VISTA  
 ESCALA: 1/50

ESCALA: 1/50



04 CORTE BB  
 ESCALA: 1/50

ESCALA: 1/50

DESCIDA D'ÁGUA	
EXECUÇÃO	
ESCAVAÇÃO	-0,18 m <sup>3</sup>
FERRO	-1,840 kg/m
FORMA	-1,080 m <sup>2</sup>
CONCRETO (C100 kg/m <sup>3</sup> )	-0,063 m <sup>3</sup>
CONSUMO DESMIDA D'ÁGUA	
CIMENTO	-0,300 tm
AREIA	-0,861 tm
BRITA	-1,086 tm
MOCHILA	-0,013 tm
FERRO	-0,001 tkg
CONSÓLIO ENTRADA D'ÁGUA	
CIMENTO	0,0055 tm
AREIA	0,0420 tm
BRITA	0,0267 tm
MADEIRA	0,0015 tm
CONSUMO SADA D'ÁGUA	
CIMENTO	0,0158 tm
AREIA	0,0723 tm
BRITA	0,0695 tm
PIEDRA	0,2186 tm
MOCHILA	0,0033 tm

BANQUETA DE ATERRIO	
EXECUÇÃO	
ESCAVAÇÃO	0,015m <sup>3</sup>
CONCRETO (C100kg/m <sup>3</sup> )	0,034m <sup>3</sup>
FORMA	0,30m <sup>2</sup>
CONSUMO	
CIMENTO	0,007tm
AREIA	0,0239tm
BRITA	0,0462tm
MOCHILA	0,0029tm

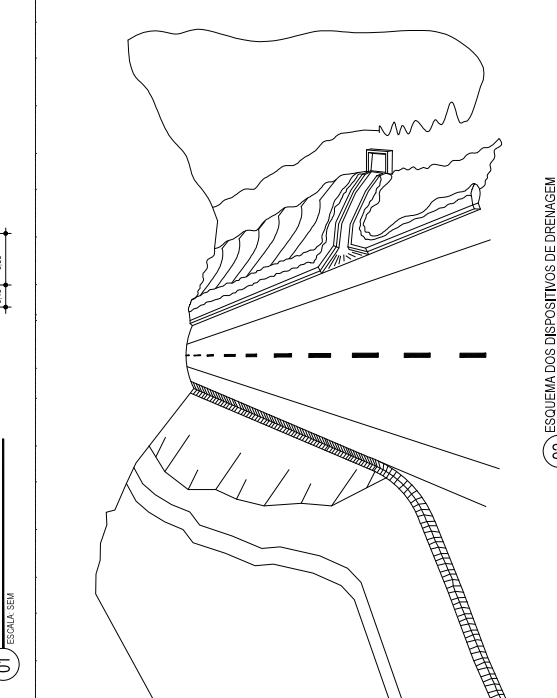
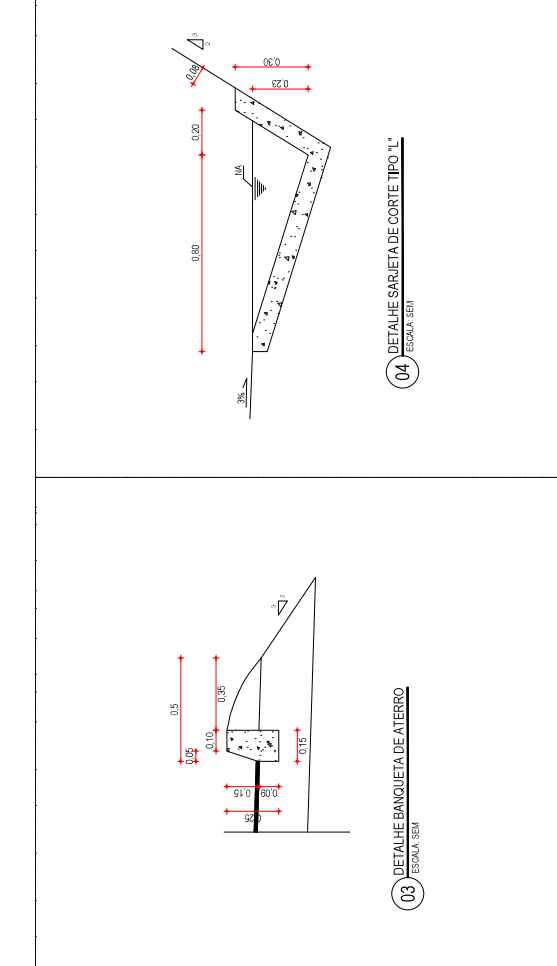
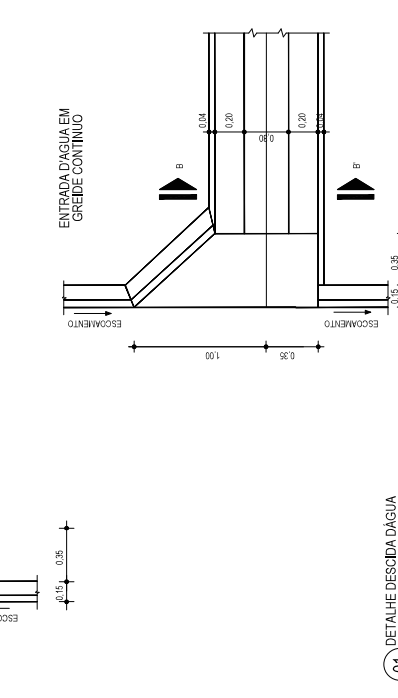
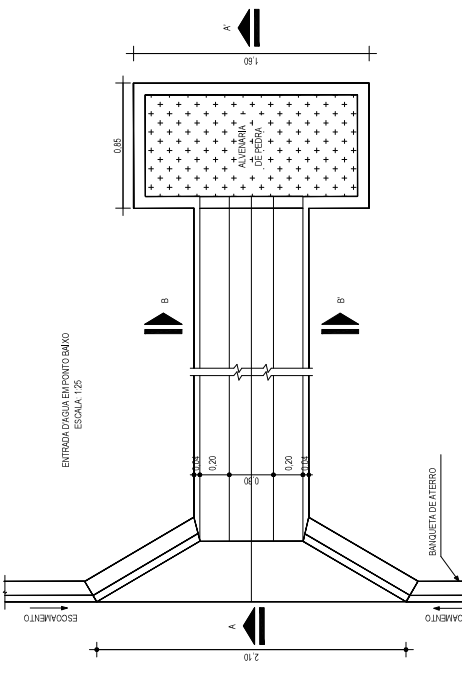
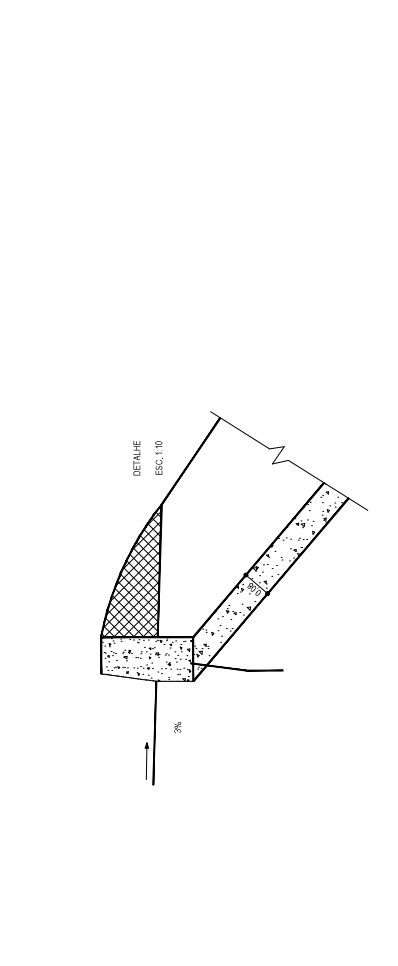
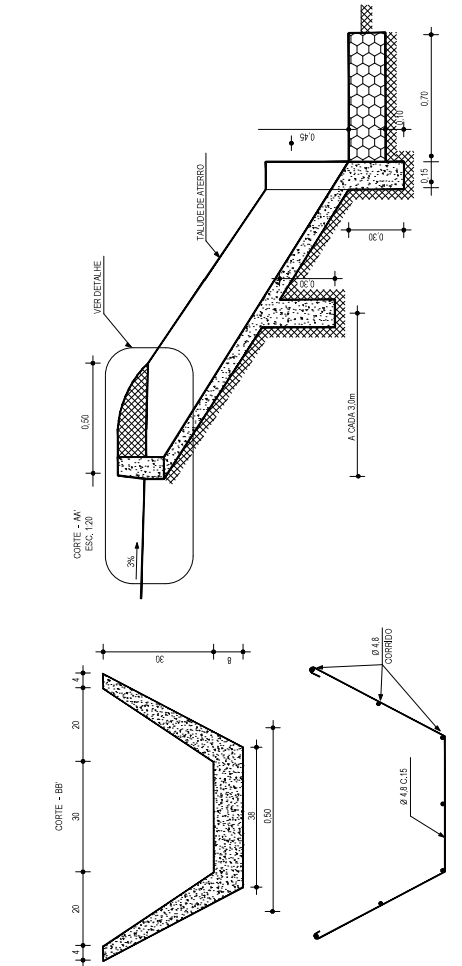
SARJETE TIPO L	
EXECUÇÃO	
ESCAVAÇÃO	0,115m <sup>3</sup>
CONCRETO (C100kg/m <sup>3</sup> )	0,086m <sup>3</sup>
FORMA	0,250m <sup>2</sup>
CONSUMO	
CIMENTO	0,016tm
AREIA	0,0758tm
BRITA	0,1248tm
MOCHILA	0,0039tm

NOTAS	
PROPOSTA	
APROVAÇÃO	

ASSINATURAS E APROVAÇÃO	
PROPOSTA	
APROVAÇÃO	

PROPOSTA	
PREFEITURA MUNICIPAL DE ARACATI	
PÁVIMENTAÇÃO IN. CE-123 A LOCALIDADE DE TEBALDO EM ARACATI	
CONTEÚDO	
PÁVIMENTAÇÃO ASFÁLTICA IN. CE-123 A LOCALIDADE DE TEBALDO	
PROJETO DE DRENAGEM	
IDENTIFICAÇÃO DOS DESENTES	
DISPOSITIVOS DE DRENAGEM	
ESQUEMAS DOS DISPOSITIVOS DE DRENAGEM	
01. DETALHE BANQUETA DE ATERRIO	
02. DETALHE SARJETE DE CORTE TIPO L	

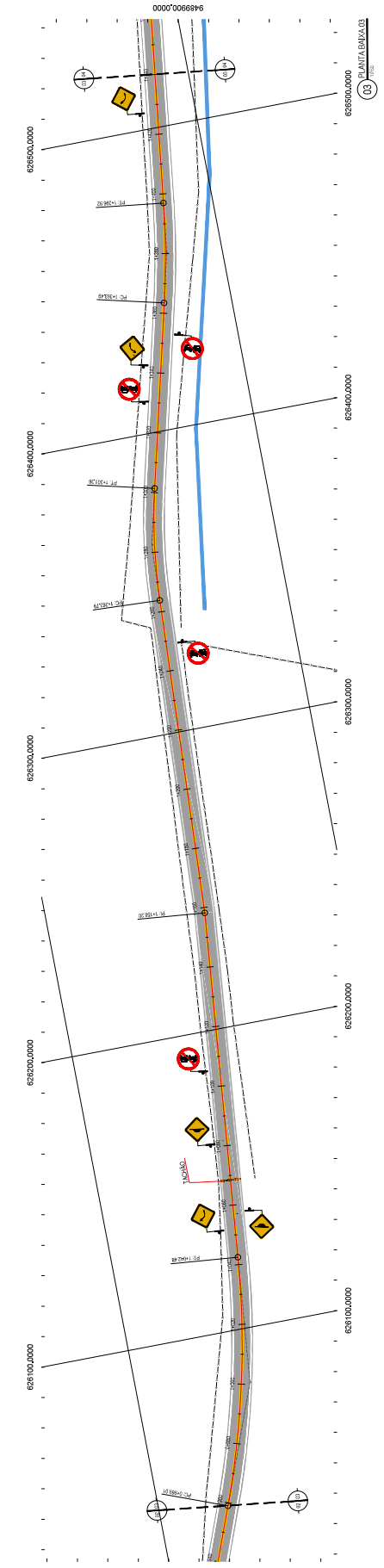
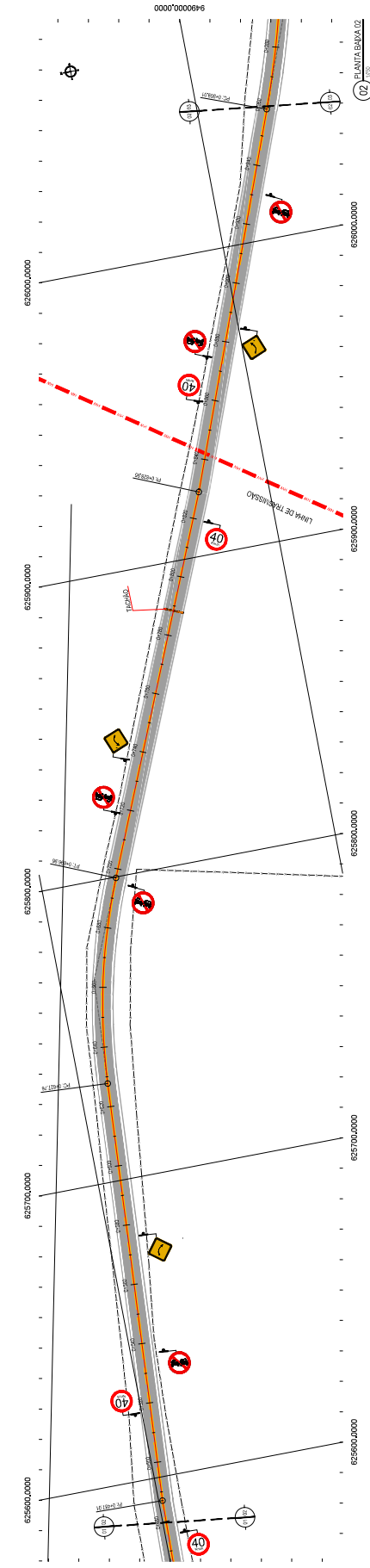
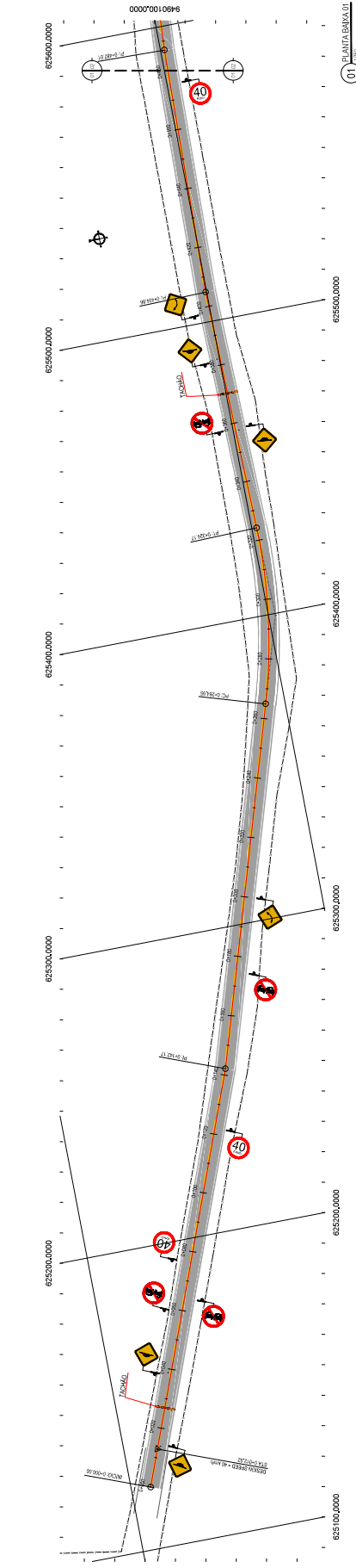
PROJETO	
DATA	JULHO/2018
PROJETA	INDICAÇÃO
PROJETO	12/17
PROJETO	ARCT 2018.46






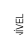


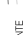
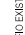
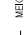











































<b>LEGENDA: PLANALTA</b>	
	CAPAS HÍNTEL
	MEIOS FÍSICOS
	CERCA
	RAMO
	PROJEÇÃO DE ALINHAMENTO
	SENTI DO ESCOAMENTO
	VEGETAÇÃO
	ESTRUTURAÇÃO
	ASFALTO
	PAVIMENTO DE CONCRETO
	PAVIMENTO DE CIMENTO
	FECHADURA
	R7
	R8
	R9
	R10
	R11
	R12
	TACHADO

**NOTAS:**  
 1. LEVANTAMENTO REALIZADO EM 2024.  
 2. PROJETO DE OBRAS DE RECONSTRUÇÃO DE 12,00m DE LARGURA DE TERAÇOS DE BARRIO.  
 3. PROJETO DE OBRAS DE RECONSTRUÇÃO DE 12,00m DE LARGURA DE TERAÇOS DE BARRIO.





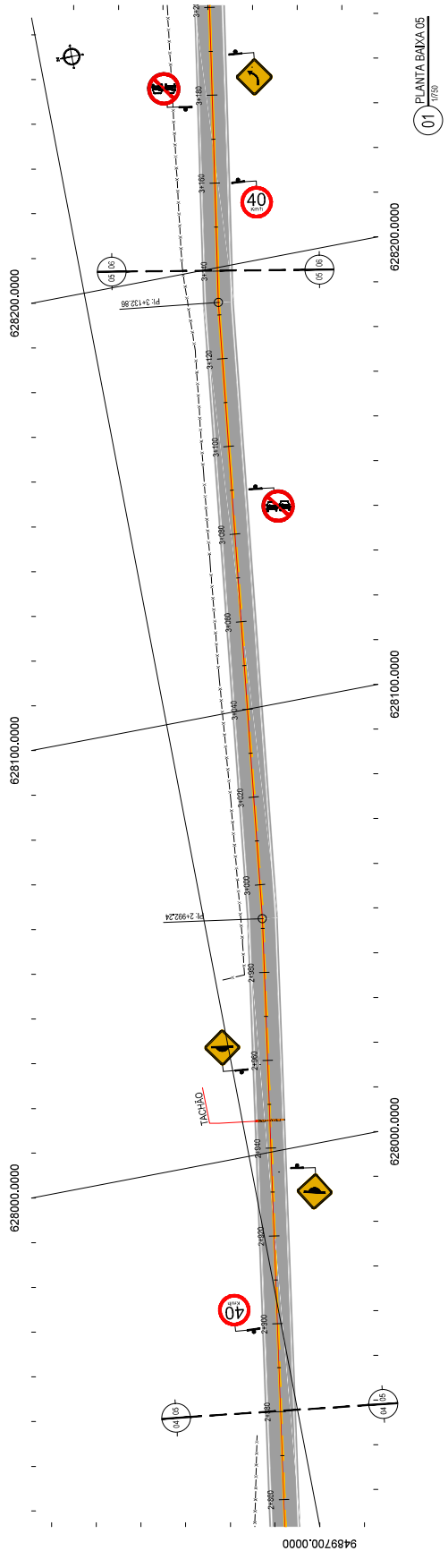
**LEGENDA - EM PLANTA**

-  CURVA DE NÍVEL
-  MECIDO EXISTENTE
-  MECIDO PROJETADO
-  CERCA
-  MURO
-  ASFALTO
-  PARALELEPÍPEDO
-  SENTIDO DO ESCARAMENTO
-  EDIFICAÇÕES
-  VEGETAÇÃO
-  B-7
-  A-18
-  A-20a
-  A-20b
-  A-20c
-  A-20d
-  40
-  No Trucks
-  No Heavy Trucks
-  No Parking
-  No Parking Trucks
-  No Parking Heavy Trucks
-  No Parking Trucks and Heavy Trucks
-  No Parking Trucks and Heavy Trucks with Sign
-  No Parking Trucks and Heavy Trucks with Sign and Arrow
-  No Parking Trucks and Heavy Trucks with Sign and Arrow and Text
-  No Parking Trucks and Heavy Trucks with Sign and Arrow and Text and Arrow
-  No Parking Trucks and Heavy Trucks with Sign and Arrow and Text and Arrow and Text
-  No Parking Trucks and Heavy Trucks with Sign and Arrow and Text and Arrow and Text and Arrow
-  No Parking Trucks and Heavy Trucks with Sign and Arrow and Text and Arrow and Text and Arrow and Text
-  No Parking Trucks and Heavy Trucks with Sign and Arrow and Text and Arrow and Text and Arrow and Text
-  No Parking Trucks and Heavy Trucks with Sign and Arrow and Text and Arrow and Text and Arrow and Text
-  No Parking Trucks and Heavy Trucks with Sign and Arrow and Text and Arrow and Text and Arrow and Text
-  No Parking Trucks and Heavy Trucks with Sign and Arrow and Text and Arrow and Text and Arrow and Text
-  No Parking Trucks and Heavy Trucks with Sign and Arrow and Text and Arrow and Text and Arrow and Text
-  No Parking Trucks and Heavy Trucks with Sign and Arrow and Text and Arrow and Text and Arrow and Text
-  No Parking Trucks and Heavy Trucks with Sign and Arrow and Text and Arrow and Text and Arrow and Text
-  No Parking Trucks and Heavy Trucks with Sign and Arrow and Text and Arrow and Text and Arrow and Text
-  No Parking Trucks and Heavy Trucks with Sign and Arrow and Text and Arrow and Text and Arrow and Text
-  No Parking Trucks and Heavy Trucks with Sign and Arrow and Text and Arrow and Text and Arrow and Text
-  No Parking Trucks and Heavy Trucks with Sign and Arrow and Text and Arrow and Text and Arrow and Text
-  No Parking Trucks and Heavy Trucks with Sign and Arrow and Text and Arrow and Text and Arrow and Text
-  No Parking Trucks and Heavy Trucks with Sign and Arrow and Text and Arrow and Text and Arrow and Text
-  No Parking Trucks and Heavy Trucks with Sign and Arrow and Text and Arrow and Text and Arrow and Text
-  No Parking Trucks and Heavy Trucks with Sign and Arrow and Text and Arrow and Text and Arrow and Text
-  No Parking Trucks and Heavy Trucks with Sign and Arrow and Text and Arrow and Text and Arrow and Text
-  No Parking Trucks and Heavy Trucks with Sign and Arrow and Text and Arrow and Text and Arrow and Text
-  No Parking Trucks and Heavy Trucks with Sign and Arrow and Text and Arrow and Text and Arrow and Text
-  No Parking Trucks and Heavy Trucks with Sign and Arrow and Text and Arrow and Text and Arrow and Text
-  No Parking Trucks and Heavy Trucks with Sign and Arrow and Text and Arrow and Text and Arrow and Text

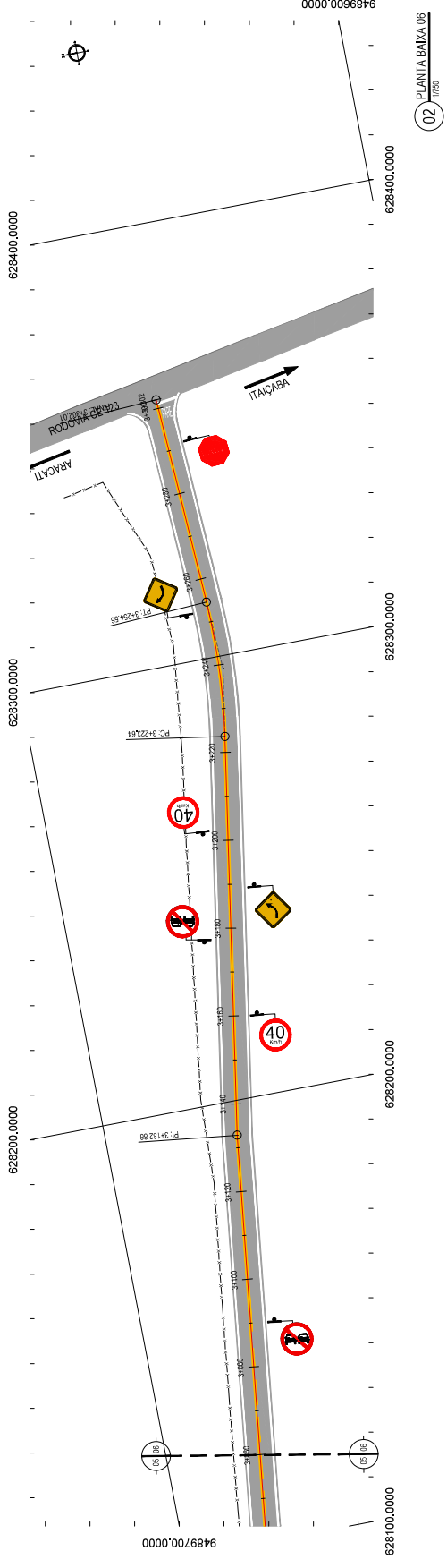
**NOTAS**  
 DATA VERTICAL - ARRIBA DOS BARRIS (WGS84)  
 MERIDIANO CENTRAL - 50° W GR.  
 PROJEÇÃO UNIVERSAL DE MERCATOR (UTM) - ZONA 24N

**ASIMETRIAS E APROVAÇÃO**  
 PROJECTISTA: \_\_\_\_\_  
 APROVAÇÃO: \_\_\_\_\_

**PREFEITURA MUNICIPAL DE ARACATI**  
**PAVIMENTAÇÃO DE 12,23 A LOCALIDADE DE TEBALDO EM ARACATI**  
 PROJETO DE PAVIMENTAÇÃO DE 12,23 A LOCALIDADE DE TEBALDO  
 CONTEÚDO: PAVIMENTAÇÃO ASFALTICA IN-CE-123 A LOCALIDADE DE TEBALDO  
 PROJETO DE SINALIZAÇÃO  
 IDENTIFICAÇÃO DOS ELEMENTOS:  
 01 - PLANTA BAIXA 07  
 02 - PLANTA BAIXA 08



01 PLANTA BAIXA 05  
1/750



02 PLANTA BAIXA 06  
1/750

**PLACAS DO TEBALDO**

PLACAS	CODIGO	DIMENSÕES (CM)
	R-7	Ø=1,00
	R-19.4	Ø=1,00
	R-4	Ø=1,00

**PLACAS DE ADVERTENCIA**

PLACAS	CODIGO	DIMENSÕES (CM)
	A-2b	1,00x1,00
	A-2b	1,00x1,00
	A-18	1,00x1,00
	A-3b	1,00x1,00
	A-3b	1,00x1,00

**NOTAS**

1. CARACTERÍSTICAS DAS PLACAS REGULAMENTARES
2. CARACTERÍSTICAS DAS PLACAS DE ADVERTENCIA

1. CARACTERÍSTICAS DAS PLACAS REGULAMENTARES		2. CARACTERÍSTICAS DAS PLACAS DE ADVERTENCIA	
Função	Localização	Função	Localização
Indicação	- Branco	Indicação	- Branco
Letras	- Amarela	Letras	- Amarela
Símbolos	- Preto	Símbolos	- Preto
Viagem	- Preto	Viagem	- Preto

MEDIDAS		MEDIDAS	
Altura	Largura	Altura	Largura
- 1,50m	- 1,50m	- 1,50m	- 1,50m
- 1,00m	- 1,00m	- 1,00m	- 1,00m

CORES		CORES	
Função	Localização	Função	Localização
Letras	- Amarela	Letras	- Amarela
Símbolos	- Preto	Símbolos	- Preto
Viagem	- Preto	Viagem	- Preto

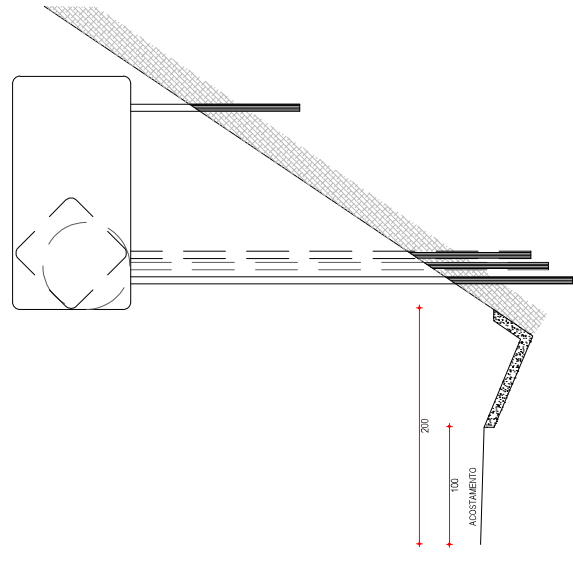
**ASSINATURAS E APROVAÇÃO**

PROJETISTA: \_\_\_\_\_  
 APROVAÇÃO: \_\_\_\_\_

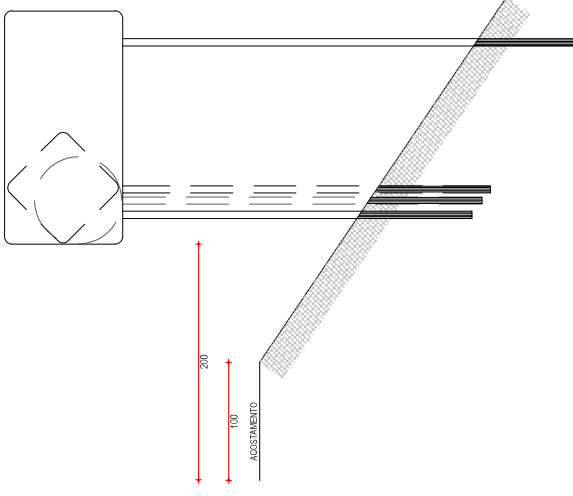
PROPOSTANTE:  
**PREFEITURA MUNICIPAL DE ARACATI**  
 LOCALIZAÇÃO: MA. CE-123 A LOCALIDADE DE TEBALDO EM ARACATI

PROJETO DE SINALIZAÇÃO  
 IDENTIFICAÇÃO DAS ESTRADAS  
 01. DETALHE PLACAS INDICATIVAS EM ATERRO  
 02. DETALHE PLACA DE REGULAMENTAÇÃO R-41  
 03. DETALHE PLACA DE REGULAMENTAÇÃO R-7  
 04. DETALHE PLACA DE REGULAMENTAÇÃO R-4

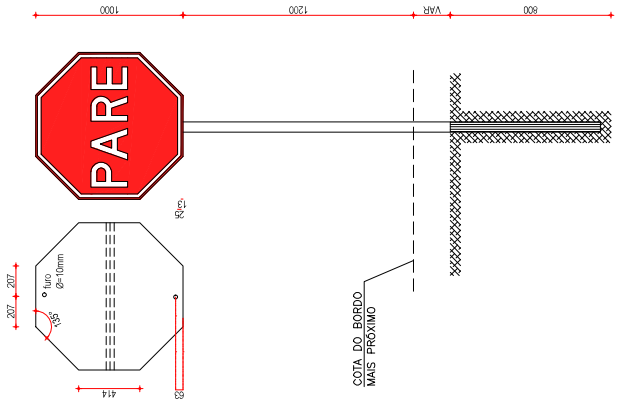
PROJETO: 16/17  
 DATA: JULHO/2018  
 ESCALA: INDICAÇÃO



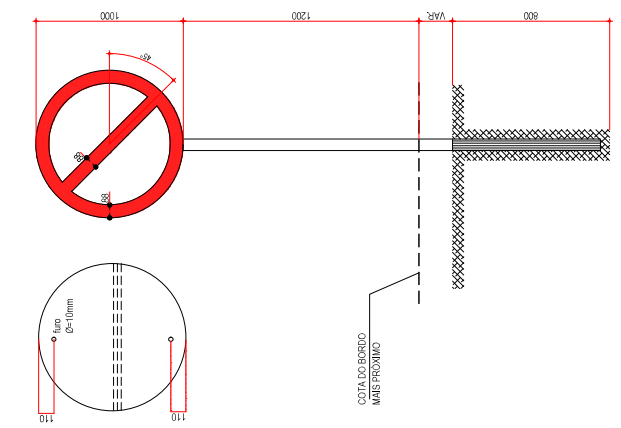
02 DETALHE PLACAS INDICATIVAS EM CORTE  
 ESCALA: SEM



01 DETALHE PLACAS INDICATIVAS EM ATERRO  
 ESCALA: SEM



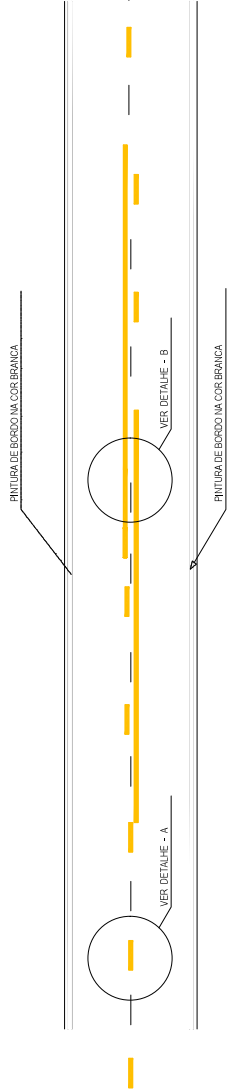
04 DETALHE PLACAS DE REGULAMENTAÇÃO R-3 A R-31  
 ESCALA: SEM



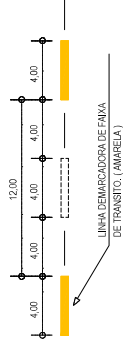
03 DETALHE PLACA DE REGULAMENTAÇÃO R-01  
 ESCALA: SEM

**NOTAS**

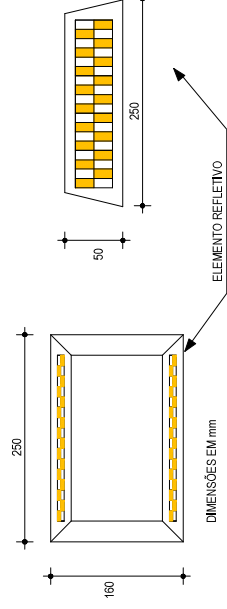
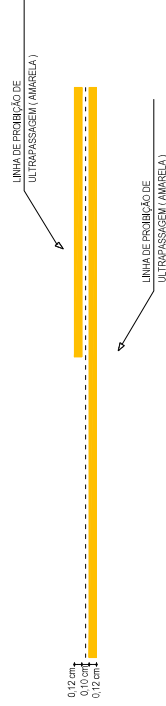
CADEIÊNCIA DE 1,1 LINHA AMARELA, ANTES E DEPOIS DA LINHA DE ULTRAPASSAGEM  
MINIMA EXTENSÃO DE 150m



**02** DETALHE A - LINHAS DEMARCADORAS DE FAIXA  
ESCALA: SEM

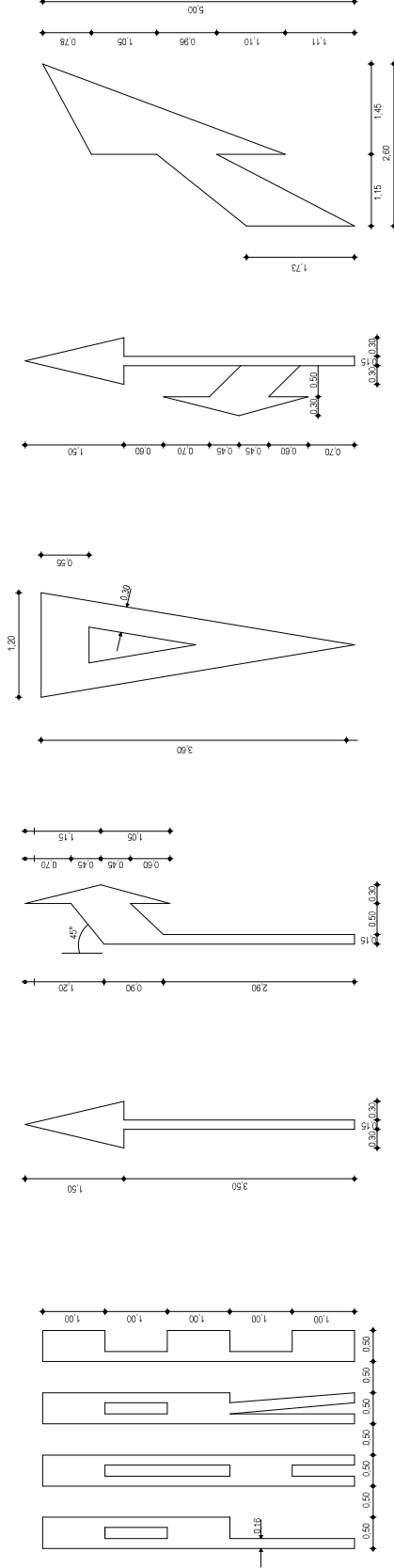


**01** DETALHE LINHAS DEMARCADORAS  
ESCALA: SEM



**04** DETALHE DO TACHÃO REFLETIVO  
ESCALA: SEM

**03** DETALHE B - LINHA DE FAIXA PROIBIDO ULTRAPASSAR  
ESCALA: SEM



**05** DETALHE SIMBOLOS NO PAVIMENTO  
ESCALA: SEM

**NOTAS**

ASSINATURAS E APROVAÇÃO

PROJEETISTA:

APROVAÇÃO:

PROPOSTA Nº: _____		PROJETO DE: _____	
PREFEITURA MUNICIPAL DE ARACATI			
PAVIMENTAÇÃO NA CE-123 A LOCALIDADE DE TEBALDO EM ARACATI			
CONTEUDO:			
PAVIMENTAÇÃO ASFÁLTICA NA CE-123 A LOCALIDADE DE TEBALDO			
PROJETO DE SINALIZAÇÃO			
IDENTIFICAÇÃO DOS ELEMENTOS:			
01	DETALHE LINHAS DEMARCADORAS	02	DETALHE LINHAS DE FAIXAS
03	DETALHE B - LINHA DE FAIXA PROIBIDO ULTRAPASSAR	04	DETALHE DOS TACHÕES
05	DETALHE DOS SIMBOLOS NO PAVIMENTO		
ESCALA: _____	PROJETO: _____	DATA: _____	PROJETO Nº: _____
TEBALDO-ARACATI	JULHO/2018	_____	17/17
_____	_____	_____	ARCT 2018.46
_____	_____	_____	INDICADA